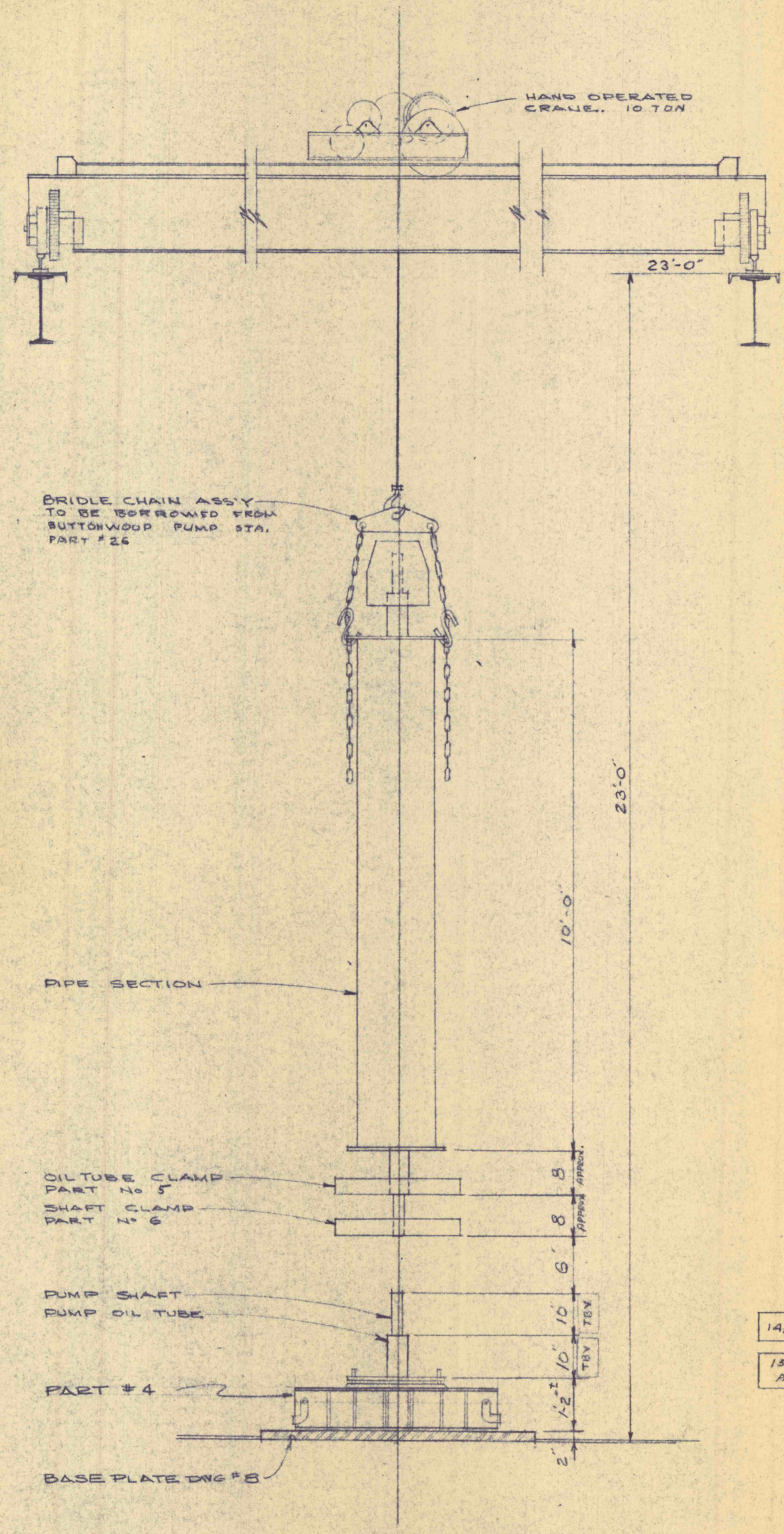
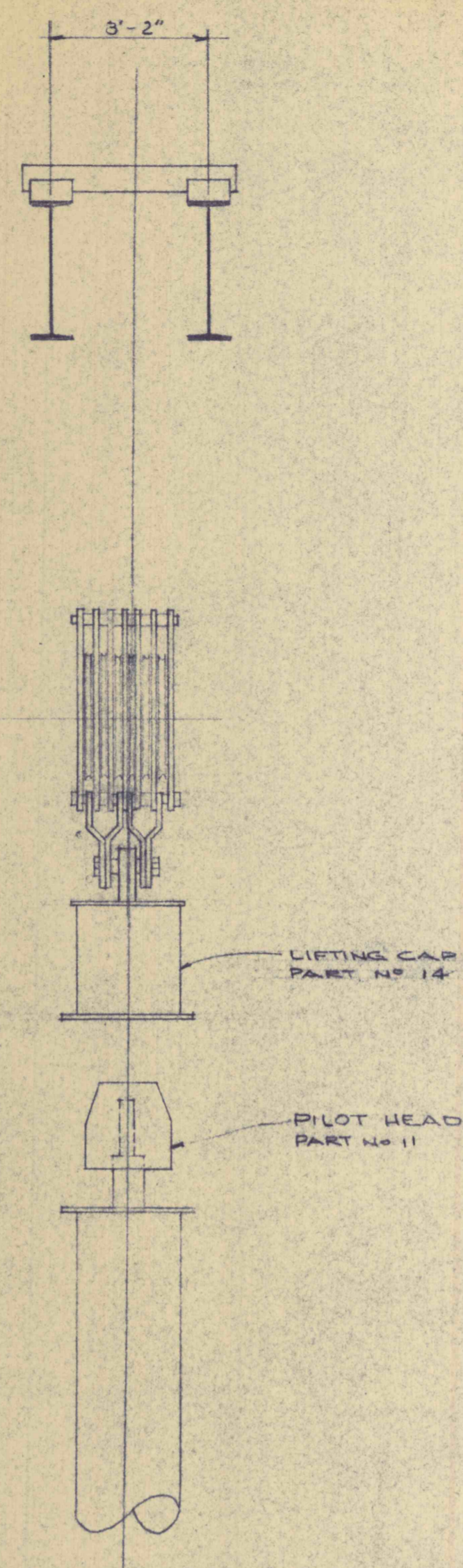
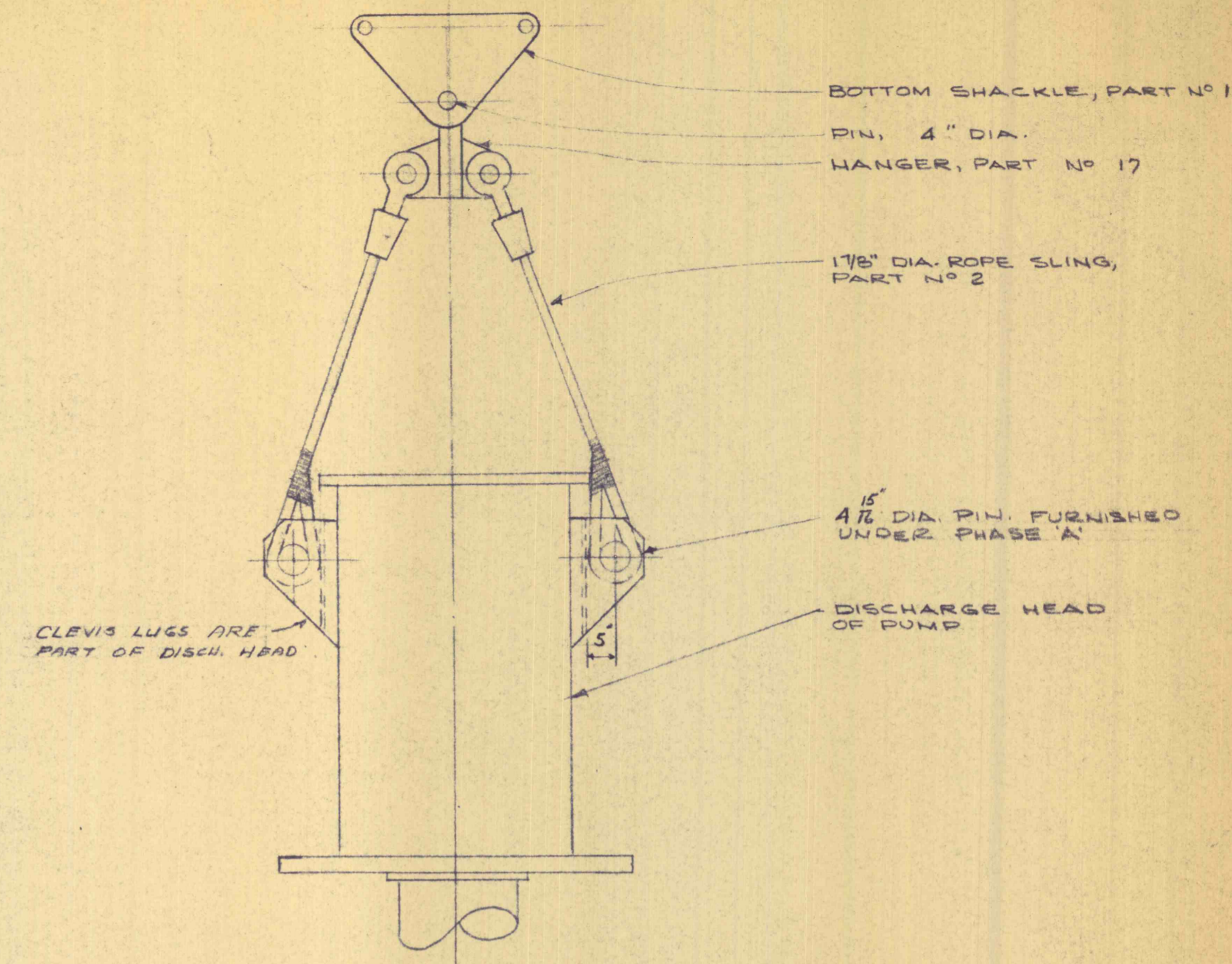


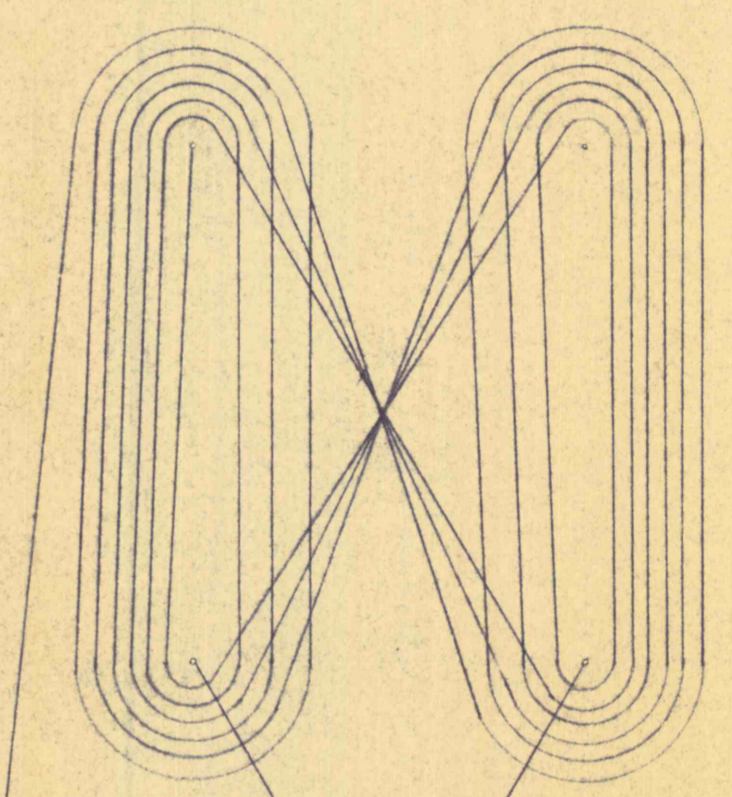
BLOCK & TACKLE ASSY - LIFT OF COLUMN PIPE
SCALE 1/2" = 1'-0"



HANDLING PIPE UNITS WITH 10 TON CRANE & ELECTRIC HOIST
SCALE 1/2" = 1'-0"

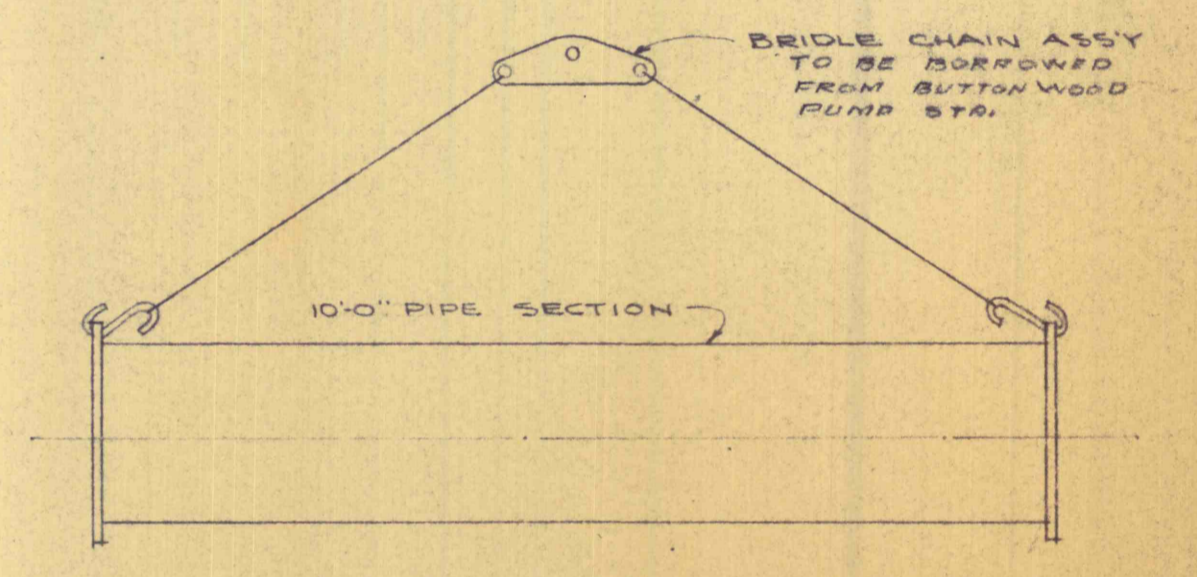


BLOCK & TACKLE LIFT OF ENTIRE PUMP BY DISCHARGE HEAD

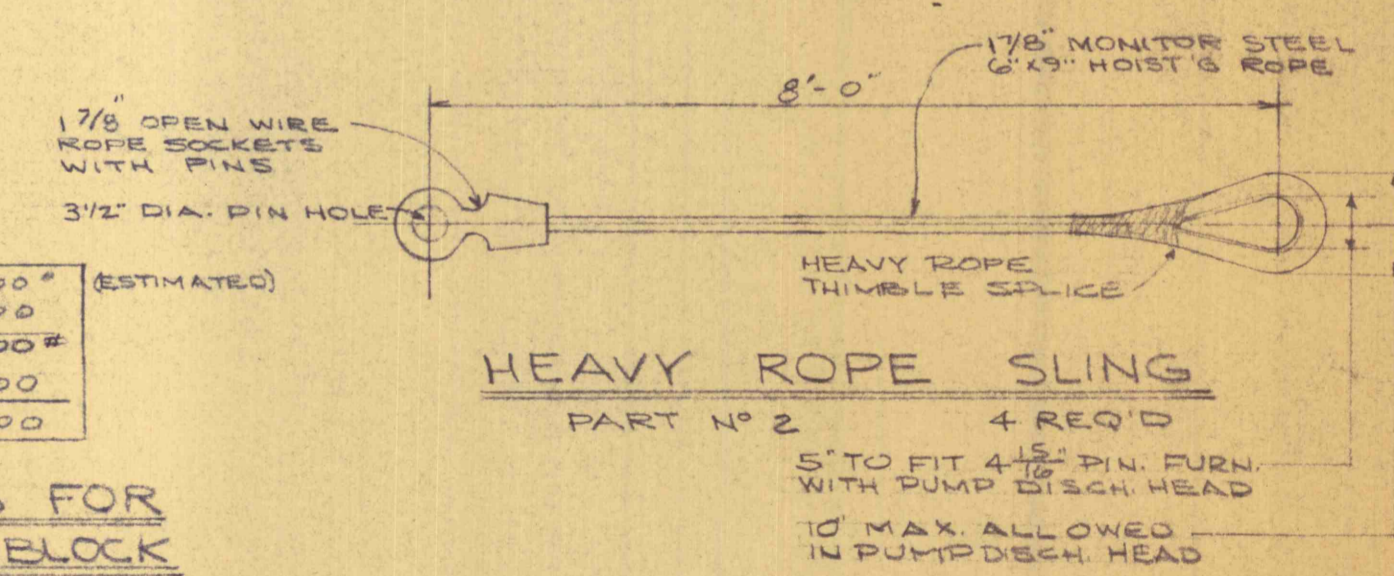


PUMP (MAX. LOAD)	194,000#	(ESTIMATED)
WIRE (8-T, ROPE, ACS, 810)	8,000#	
PLUS 25% IMPACT	50,000#	
TOTAL	252,000#	

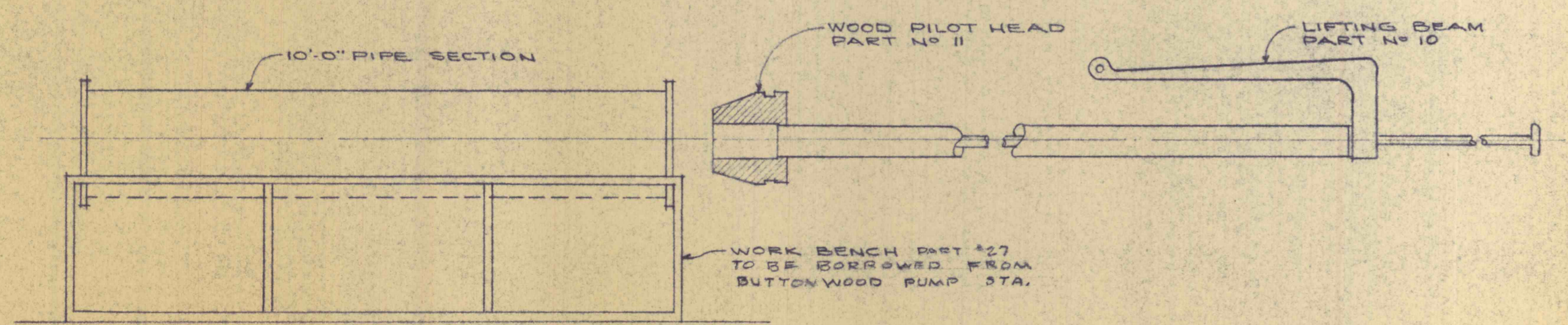
METHOD OF REEVING FOR 24 SHEAVE SHACKLE BLOCK



HANDLING PIPE FROM BENCH TO STORAGE RACK



HEAVY ROPE SLING PART NO 2 4 REQ'D
5' TO FIT 4 1/2\"/>



ASSY OF SHAFT & OIL TUBE INTO DISCHARGE HEAD

HANDLING PUMP BOWL ASSEMBLY
2 LIFTING ANGLES (BORROWED FROM BUTTWOOD) TO BE BELTED TO TOP FLANGE. ASSEMBLY MAY THEN BE LIFTED USING BRIDLE CHAIN AND 10T TRAVELING CRANE.

PUMP HANDLING TOOLS & EQUIPMENT

REVISIONS		
DEC. 30, 1952		
DEC. 8, 1952		
MAR. 10, 1953		
JULY 13, 1953		
AUG. 7, 1953		

FLOOD CONTROL PROJECT NO22 PHASE B		
PA. DEPT. OF MINES & MINERALS INDUSTRIES		
GLENALDEN CORPORATION		
TRUESDALE COLL.	ASKAM SHAFT	
ROUSHEY AND SMITH		
SCALE NOTED	ENGINEERS AND CONSULTANTS	JOB 233
DATE 7-25-58	189 MARKET ST. KINGSTON, PA.	DWG. NO. 10
BY FTK	METROPOLITAN WILKES BARRE	

