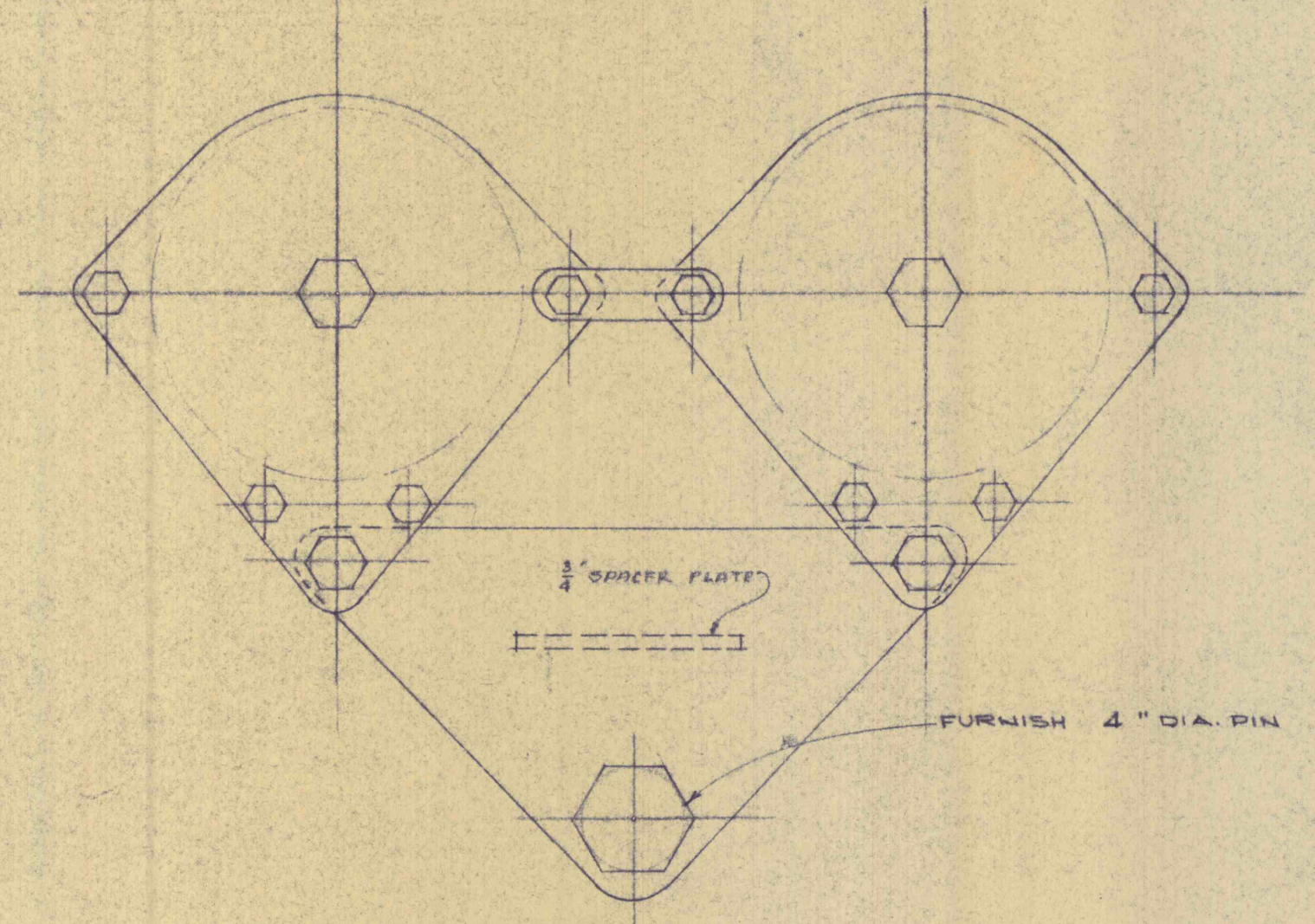
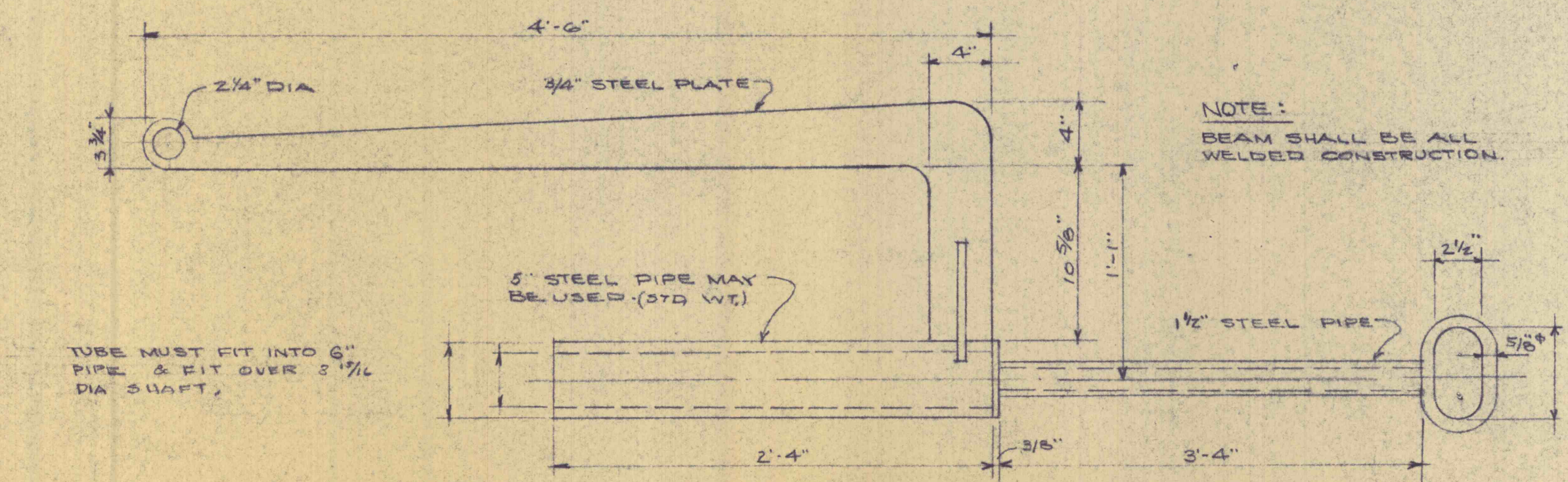


STEEL SHEAVES 18"x2 1/2" -25 CARBON
 STEEL PLATES 1/2" SAE 1035
 STEEL SHEAVE PIN 2 1/2" SAE 1040
 STEEL BODY PINS 1" SAE 1035
 STEEL HEAD & BODY BOLTS 2 1/2" SAE 1040
 STEEL TOP HANGER PIN 6" SAE 1040
 STEEL BOTTOM PLATES 1" 1010
 STEEL BOTTOM SHACKLE PIN 4" 1040
 SEE SPECIFICATIONS FOR DETAILS

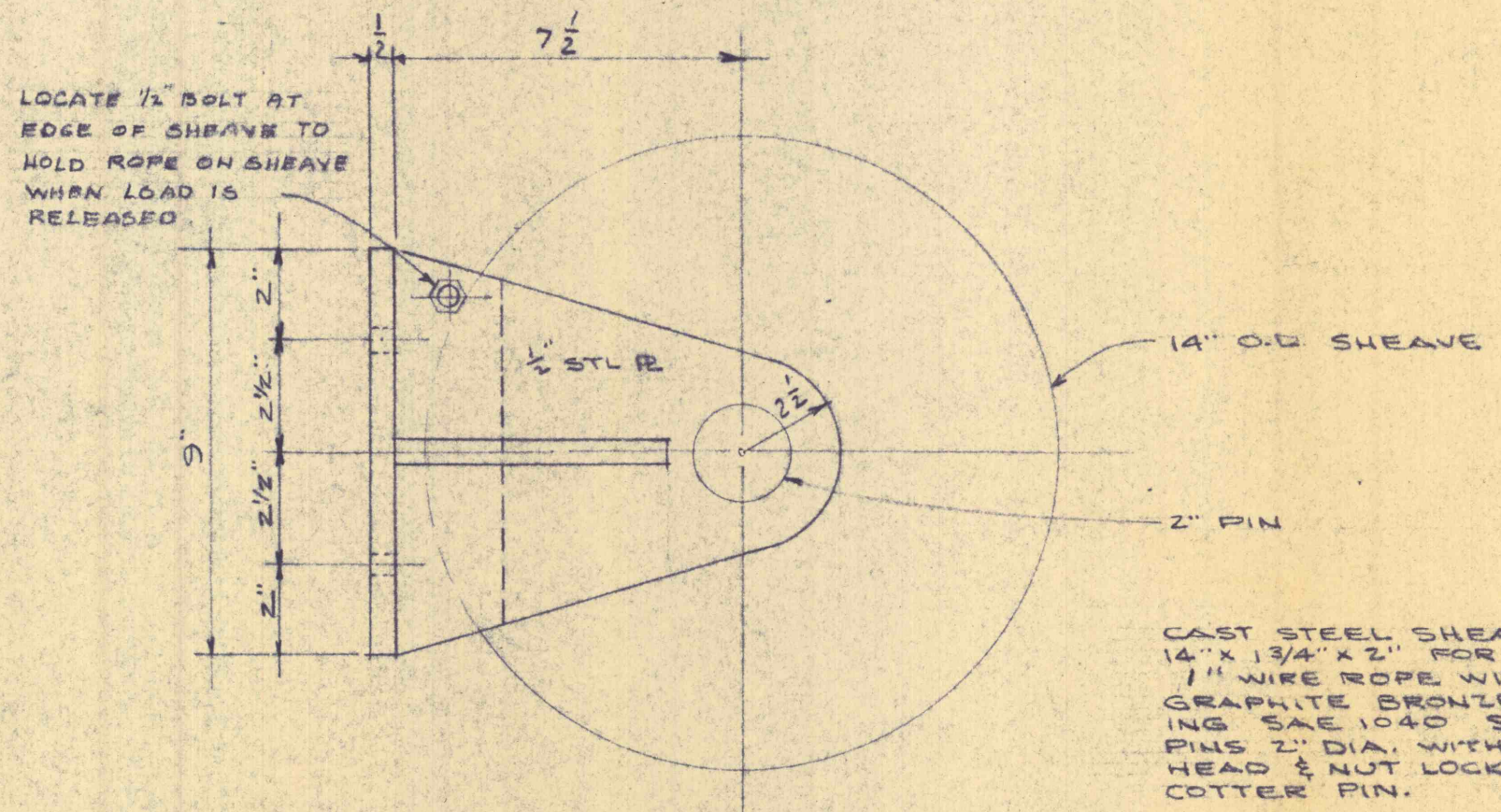
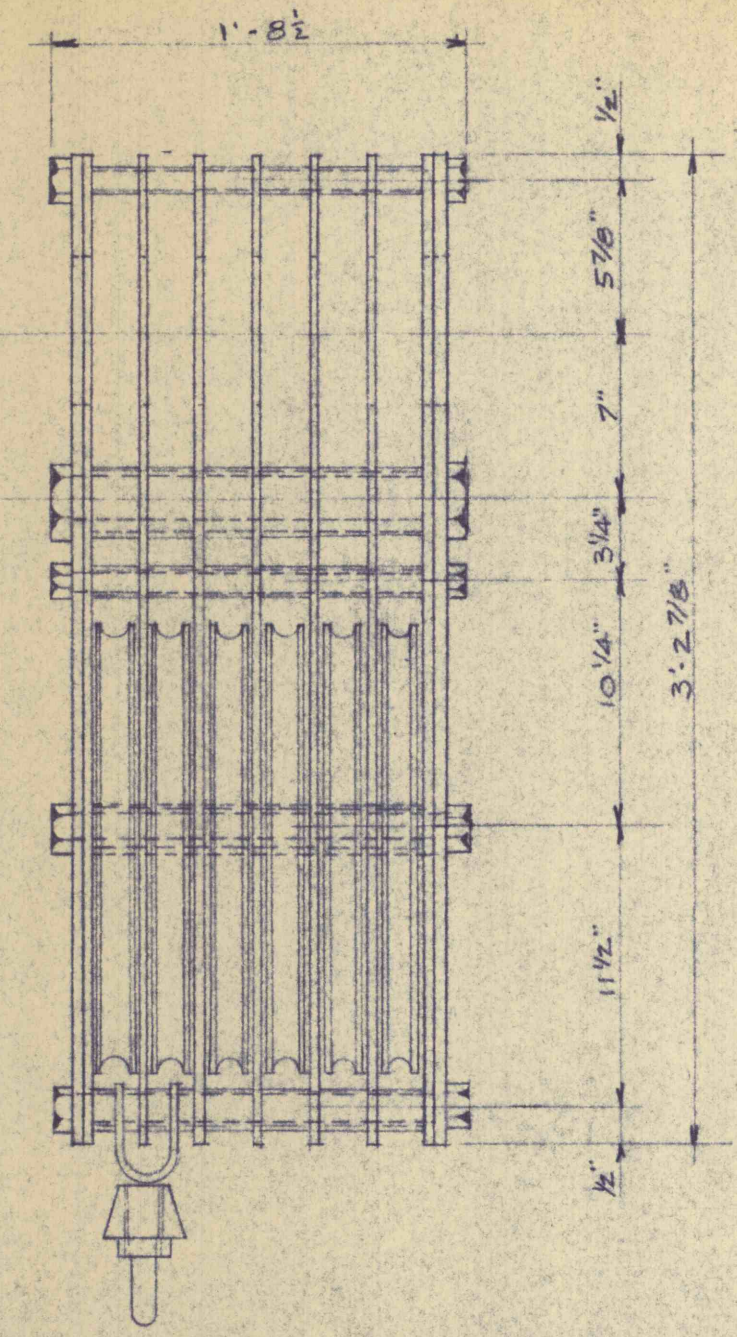
TOP SHACKLE BLOCK ASSY



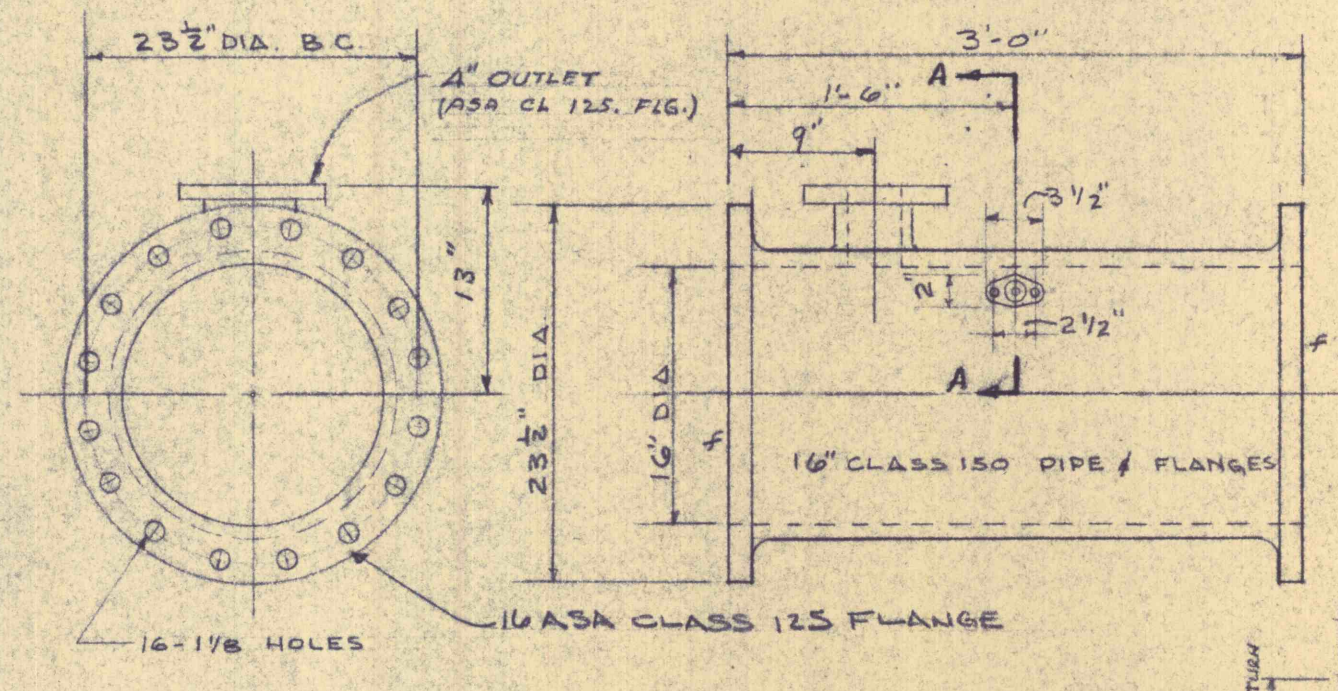
BOTTOM SHACKLE BLOCK ASSY
 PART NO 1 2-REQ'D (TOP & BOTTOM ASSY)



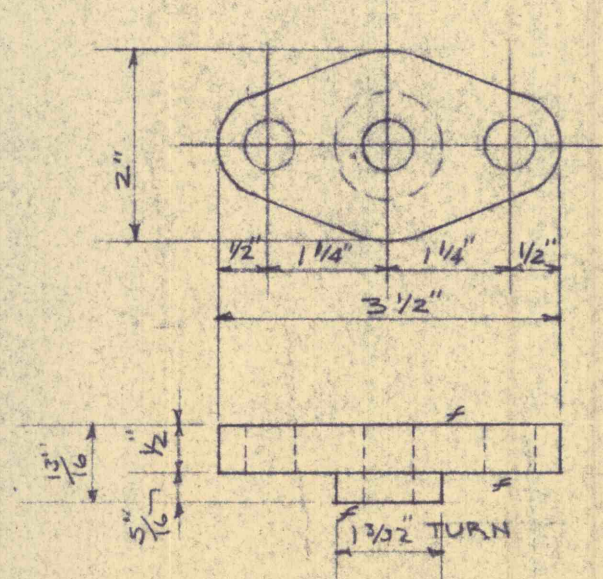
LIFTING BEAM - PART NO 10 1REQ'D
 SCALE 1/2" = 1'-0"



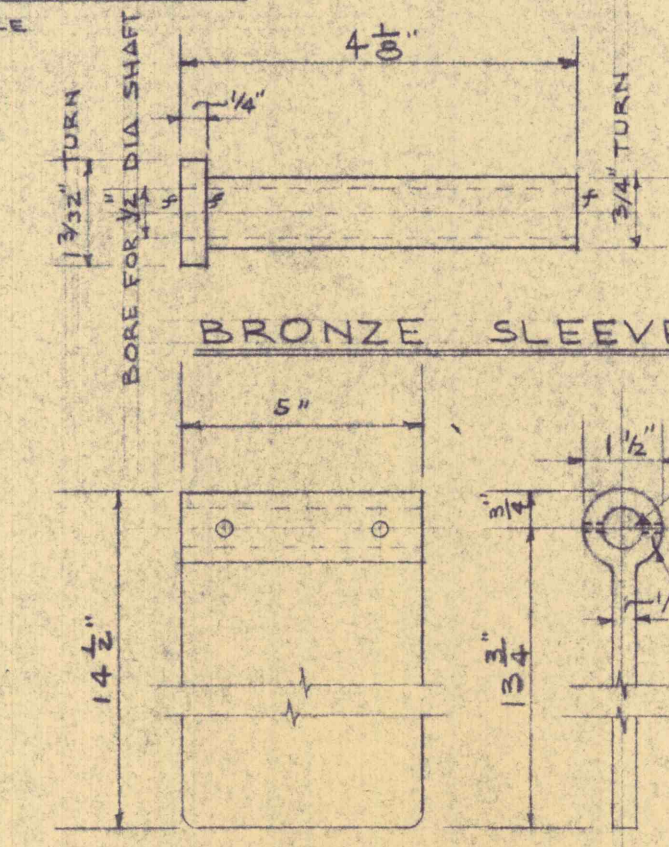
MIDWAY SNATCH BLOCK
 PART NO 15 1-REQ'D



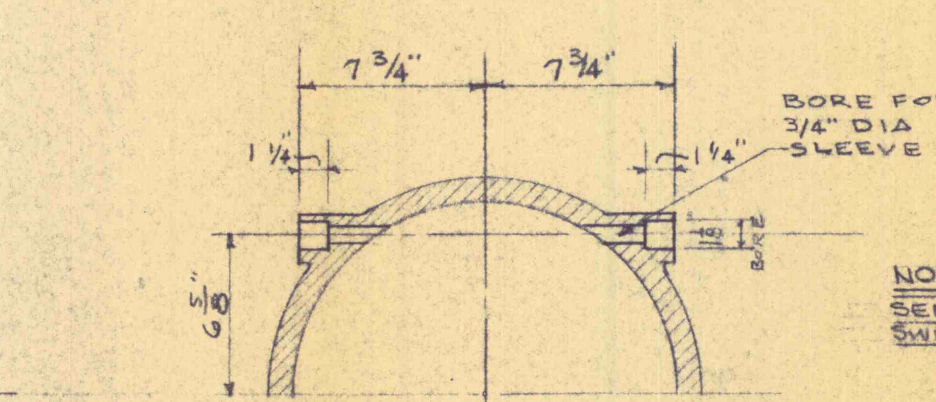
CAST IRON PIPE
 NO SCALE



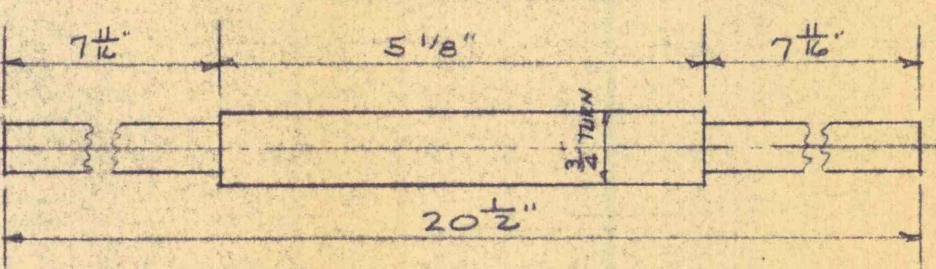
BRONZE GLAND
 NO SCALE 2REQ'D



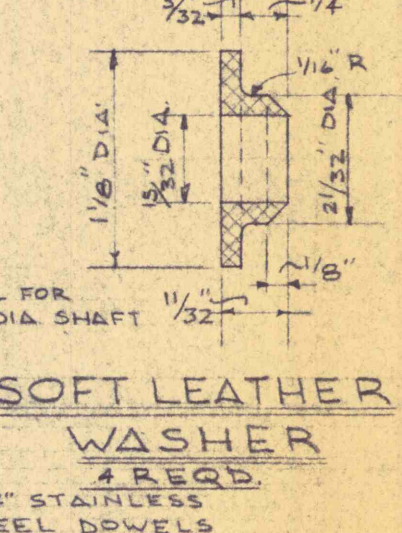
BRONZE FLAP
 NO SCALE 1REQ'D



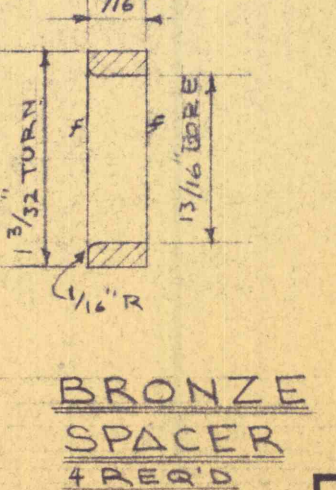
SECTION A-A
 NO SCALE



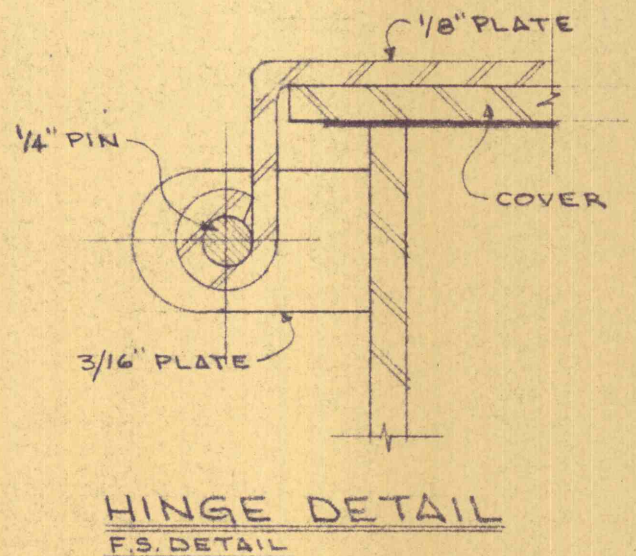
STAINLESS STEEL SHAFT
 NO SCALE 1REQ'D



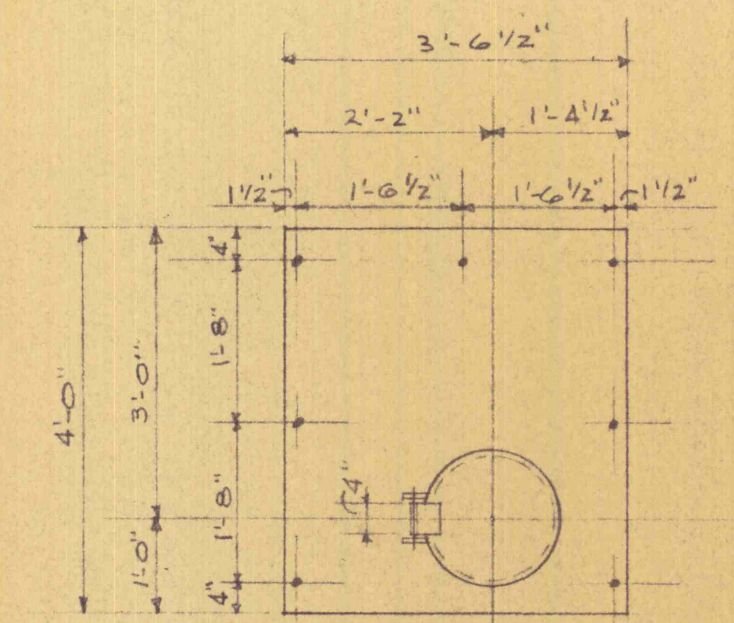
SOFT LEATHER WASHER
 4REQ'D



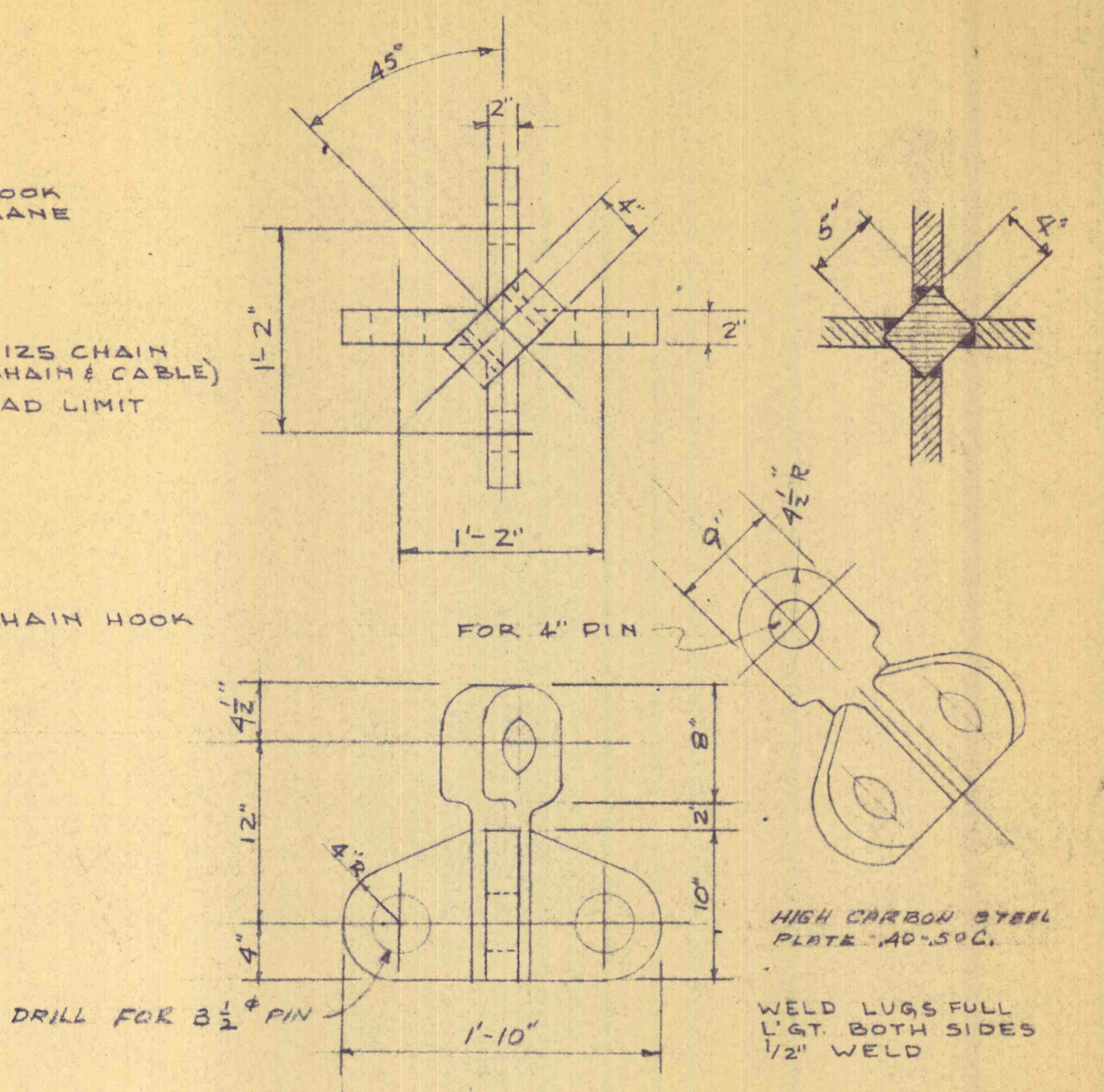
BRONZE SPACER
 4REQ'D



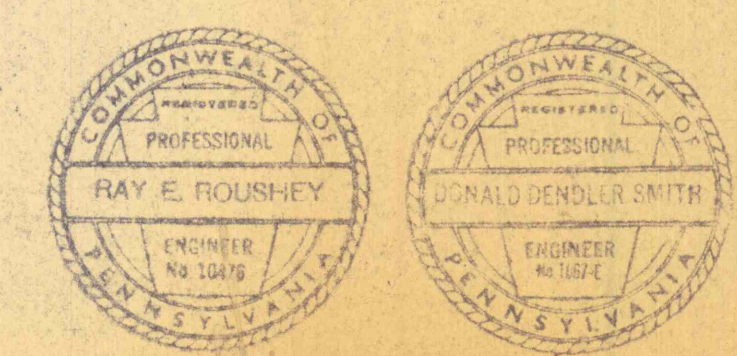
HINGE DETAIL
 FS DETAIL



VENT PIPE DETAIL
 SCALE 1/2" = 1'-0"



STEEL HANGER - PART NO 17-1REQ'D



REVISIONS		
REV. NO.	DATE	DESCRIPTION
1	DEC. 30, 1957	DWG. SIGNED
2	MAR. 10, 1958	
3	JULY 13, 1957	
4	AUG. 7, 1957	

FLOOD CONTROL PROJECT NO 22 PHASE B PA DEPT. OF MINES & MINERALS INDUSTRIES		
GLEN ALDEN CORPORATION TRUESDALE COLL. ASKAM SHAF T		
ROUSHEY and SMITH		
SCALE NOTE	ENGINEERS AND CONSULTANTS	JOB 633
DATE 9-25-58	189 MARKET ST. KINGSTON, PA	DWG. No. 12
BY FTK	METROPOLITAN WILKES BARRE	