

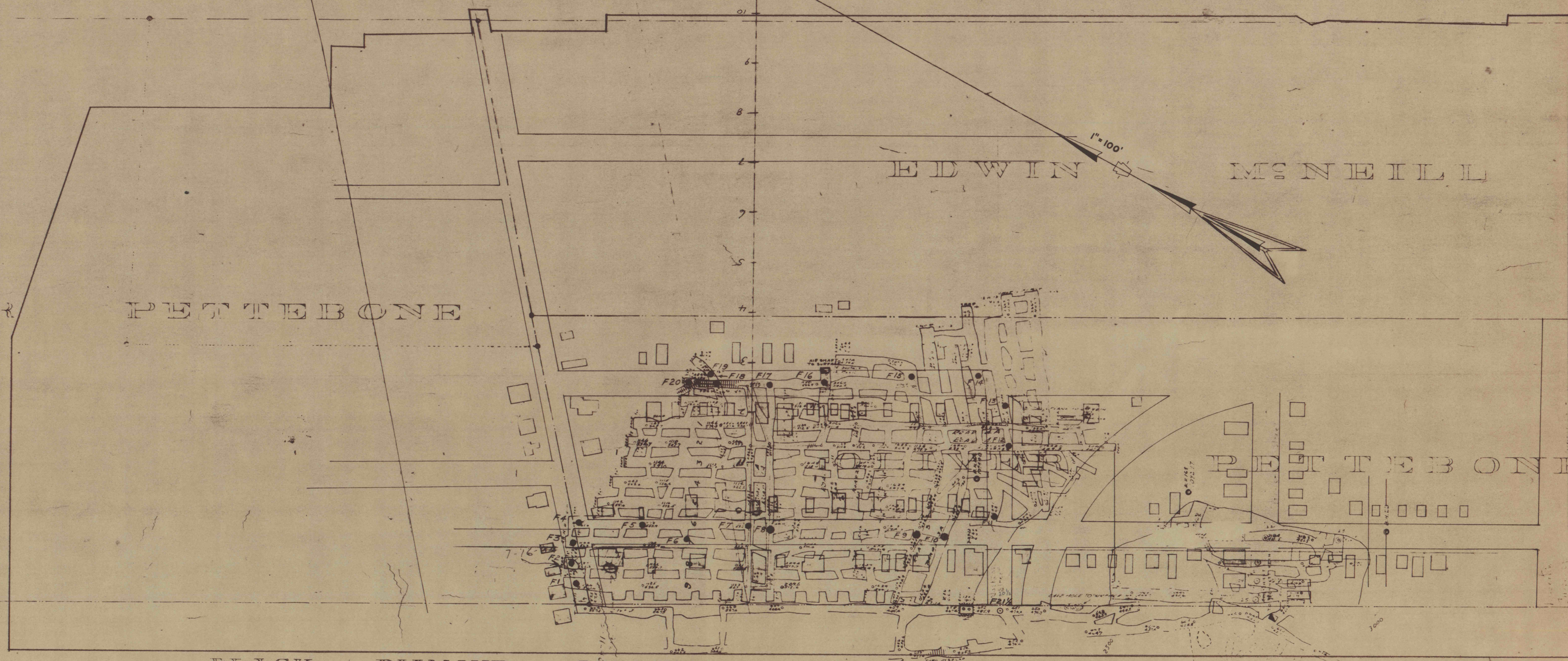
GEORGE PECK

EDWIN McNEIL

EBENEZER PETTEBONE

PETTEBONE

BLACK DIAMOND COLLIERY



LEGEND

BORING HOLES THIS CONTRACT NO.FE40:7

COMMONWEALTH OF PENNSYLVANIA
DEPARTMENT OF ENVIRONMENTAL RESOURCES
OFFICE OF RESOURCES MANAGEMENT

FILLING OF MINE VOIDS
ABANDONED HARRY E. COLL'Y
FOUR FOOT VEIN

BORO. OF SWOYERSVILLE
WITHIN THE AREAS OF DIAMOND,
SLOCUM, CHURCH, OLIVER, STREETS.

LUZERNE COUNTY
PENNSYLVANIA

DESIGNED	SUBM.	DISTRICT ENGINEER
DRAWN	RECOM.	DIRECTOR BUREAU OF CONST.
GROUP LEADER	APPR.	DEPUTY SECRETARY OF RESOURCES MANAGE.

DWG. NO.FE40:7-1-2