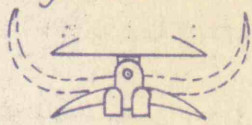
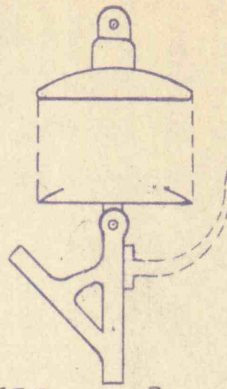


Ohio Brass Co. Suspension Clamp
Drg. 66-539



Ohio Brass Co. Strain Clamp
Drg. 66-539

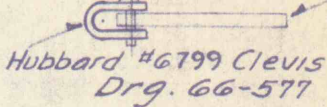


22KV Insulator Drg 66-538
2300 Volt Insulator " 66-537

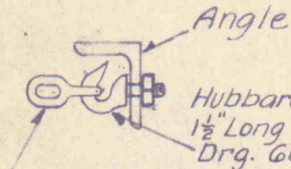
3-on wood 2-on Suspension
1-on wood

Note: Install one extra insulator on steel Towers, or when insulator support is grounded

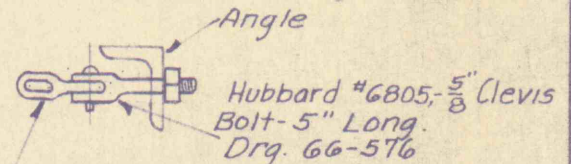
Double Arming Plate
Drg. - 66-517



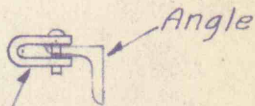
Hubbard #6799 Clevis
Drg. 66-577



Hubbard Stock #6751 1/2
1 1/2" Long Hook Bolt
Drg. 66-576
Ohio Brass Co. #72452 Twisted
Strain Link Drg. 66-577

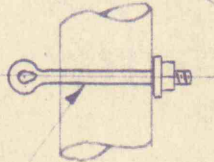


Hubbard #6805, 5/8" Clevis
Bolt - 5" Long.
Drg. 66-576
Ohio Brass Co. Cat. #72452 Twisted
Strain Link - Drg. 66-577

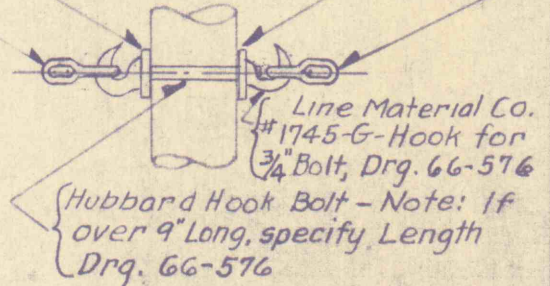


Hubbard #6800 Clevis
Drg. 66-577

Ohio Brass Co. #72452 Twisted Strain Link Drg. 66-577
Hubbard #7814 2 1/4 x 2 1/4 x 3/16" Sq Washer Drg. 66-576

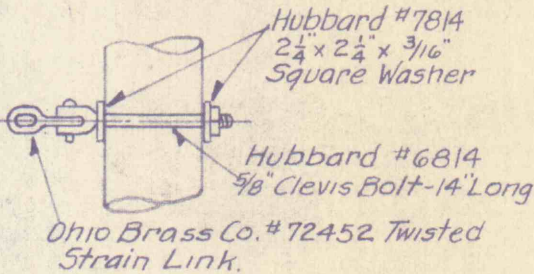


Hubbard Eye Bolt
Drg. 66-576



Line Material Co.
#1745-G-Hook for
3/4" Bolt, Drg. 66-576

Hubbard Hook Bolt - Note: If
over 9" Long, specify Length
Drg. 66-576



Hubbard #7814
2 1/4 x 2 1/4 x 3/16"
Square Washer

Hubbard #6814
5/8" Clevis Bolt - 14" Long

Ohio Brass Co. #72452 Twisted
Strain Link.

STRAIN INSULATOR CONNECTIONS.

ENGINEERING DEPARTMENT
SUSQUEHANNA COLLIERIES COMPANY
LYTLE COAL COMPANY

Wilkes Barre PA/1-17 1928 SCALE 1 FOOT

DRAWN BY E.J.D.

CHECKED BY DR. NO. 66-750

APPROVED [Signature]