

BASE OF PUMP +753.4'

583'-6"

3" STAINLESS STEEL PIPE
ATTACH TO FLANGE WITH
S.S. CLAMP & SCREWS

586.4'

3'-8"

13'-6 1/2"

+192' HIGH LIMIT
7.25 Gauge Press.

+188.4 LOW LIMIT
5.90 Gauge Press.

+174.9 BOTTOM OF PUMP
0" Gauge Press.

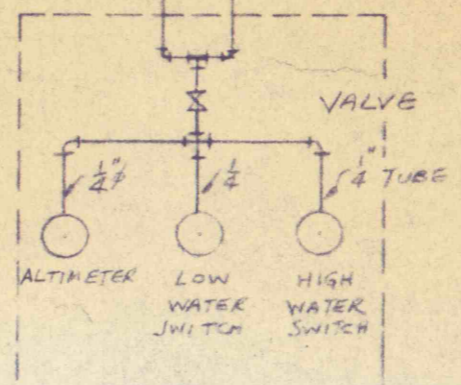
ALL BURIED AIR PIPE TO BE
INCREASED IN CORR. 2-0" MIN
BELOW GRADE

CHECK FLO PURGE
UNIT

LEVEL INDICATOR
MOUNTED ON WALL
COMBINATION PRESSURE
REDUCING VALVE & STRAINER

VALVE
VALVE

HOIST HOUSE



ALTIMETER FURNISHED IN
WEST CONTROL CABINET

LOW & HIGH WATER PRESSURE
CONTROL SWITCH - RANGE 0-150"
8 OUNCE OPERATING DIFF IN CURVE

COMPRESSOR FURNISHED - NOW
LOCATED @ LOUIS SHOP - G.A.
MOUNT ON FLOOR

CONNECTIONS FOR WATER LEVEL MEASUREMENT
800' H DEEPWELL PUMP INSTALLATION - FORGE COPE
SUSQUEHANNA ANTIARCTIC INC

Sept 8 DJ

DWG No
9

Revised 10/26/6A