

Required:- 2 Sets of Parts shown

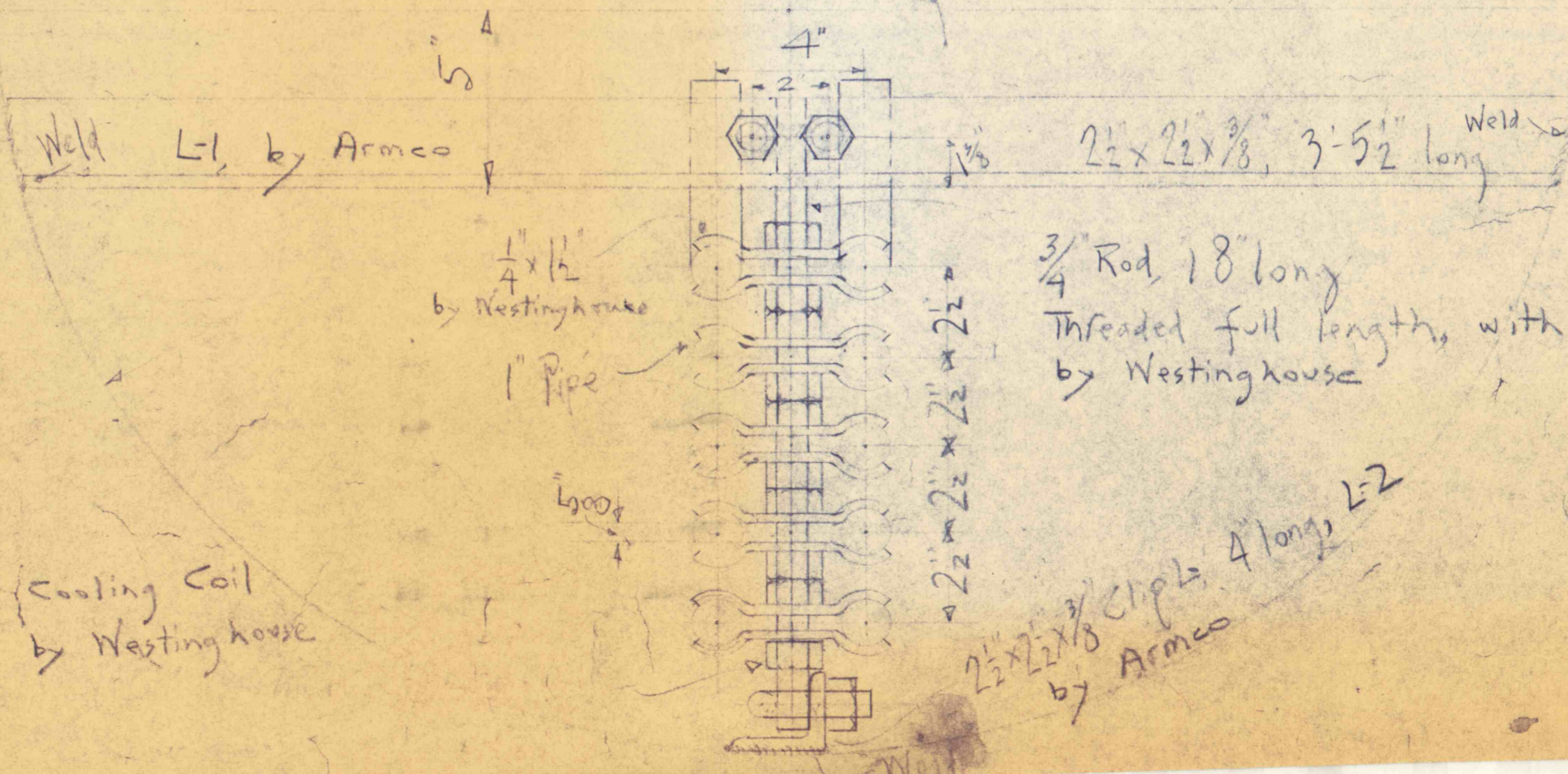
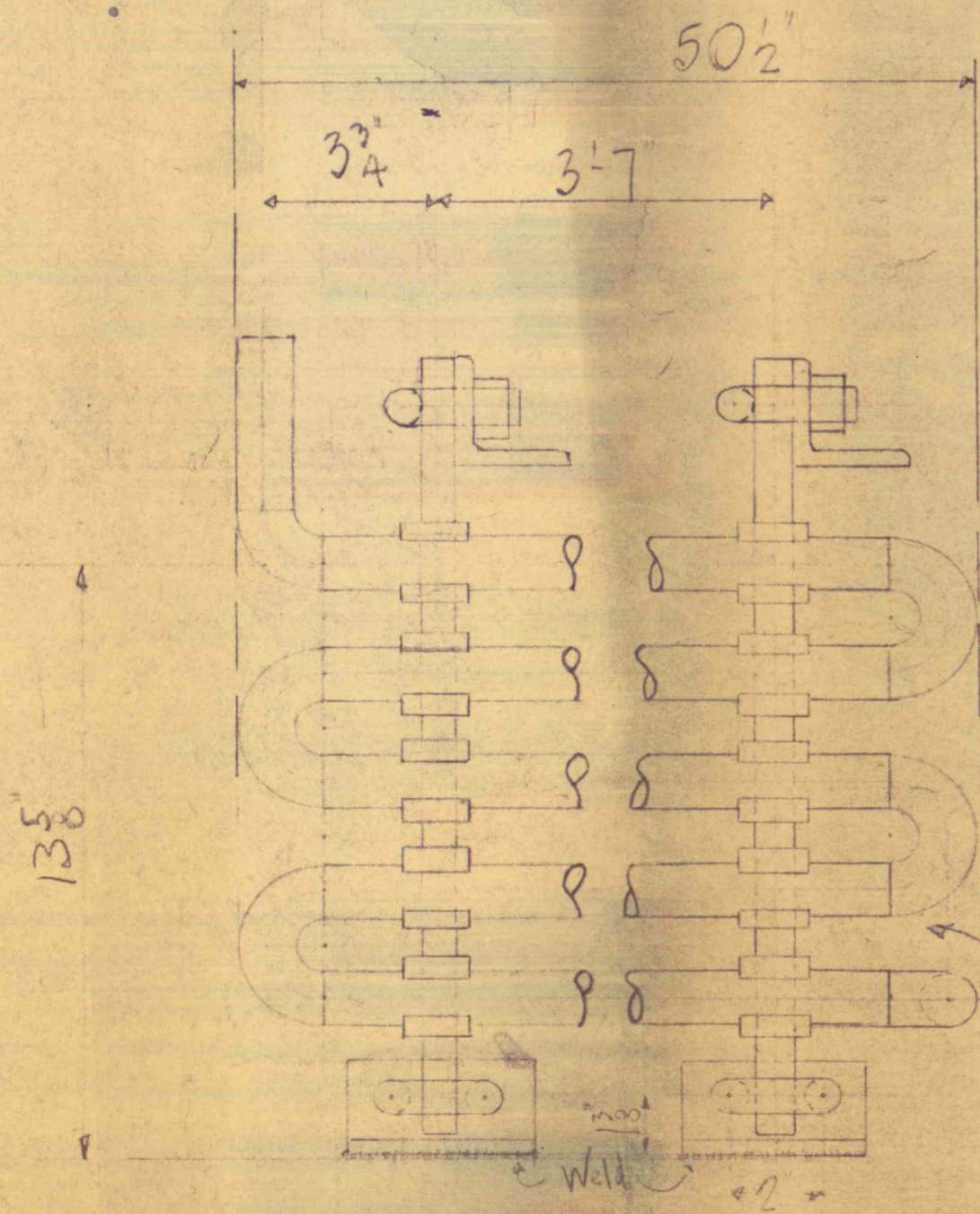
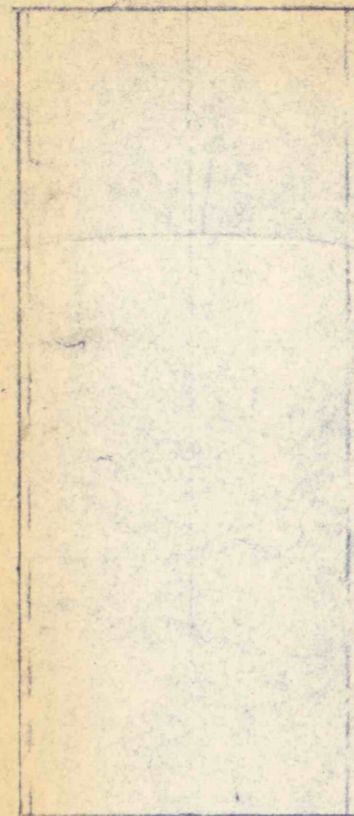
The (2) 6" pipes with Gussets

(2) Angles L-1

(4) " L-2

Are to be furnished by Armco.

Weld to Circular Pipe before coating.



Support for Circulating Coils  
 Deep Well Pumps, Scott Shaft.  
 Glen Burn Colly, Shamokin, Pa.  
 5499, Calls, Div., Nanticoke, Pa. Des. 1, 1953, 3'-1'-0"  
 67-387

67-387