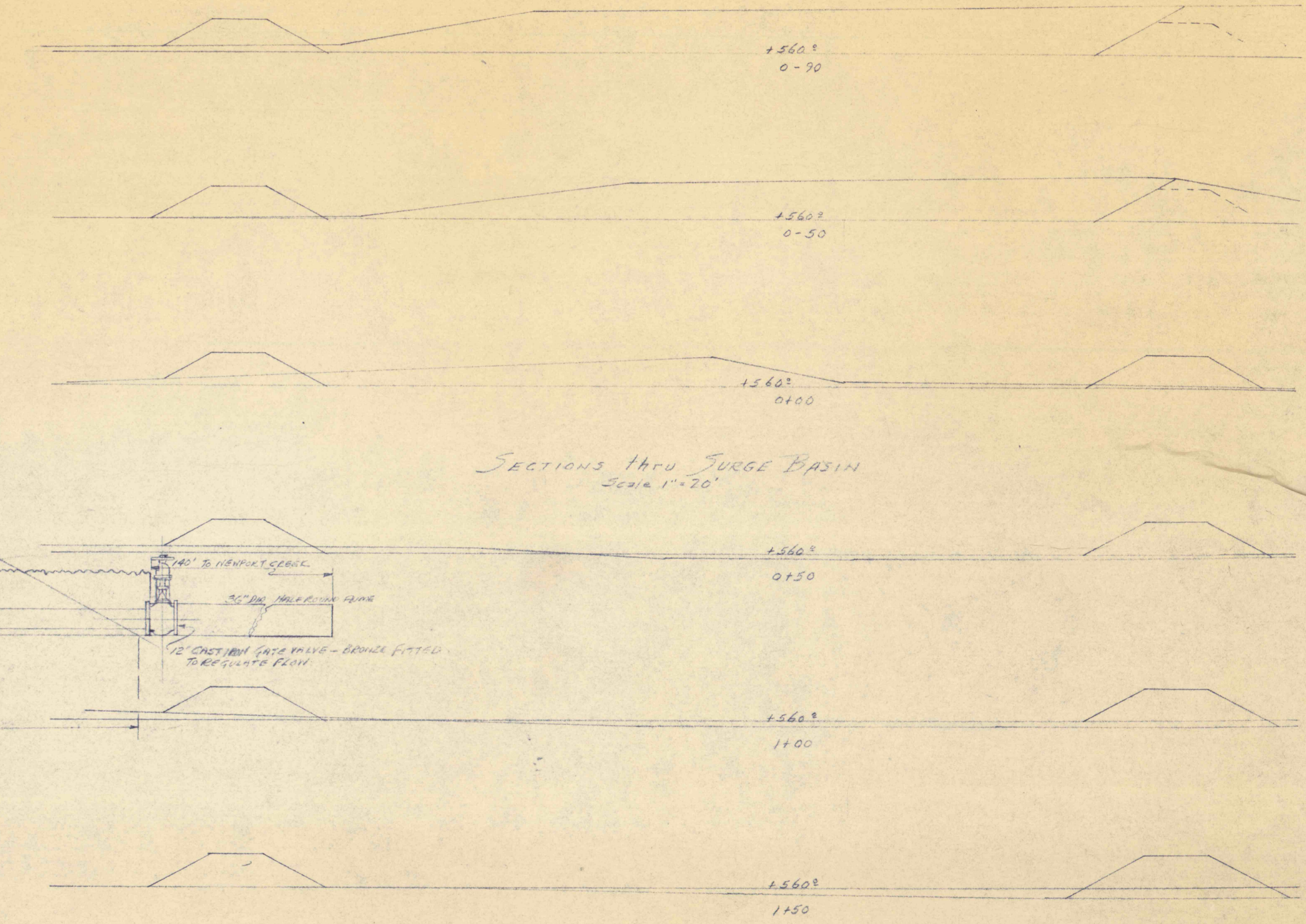
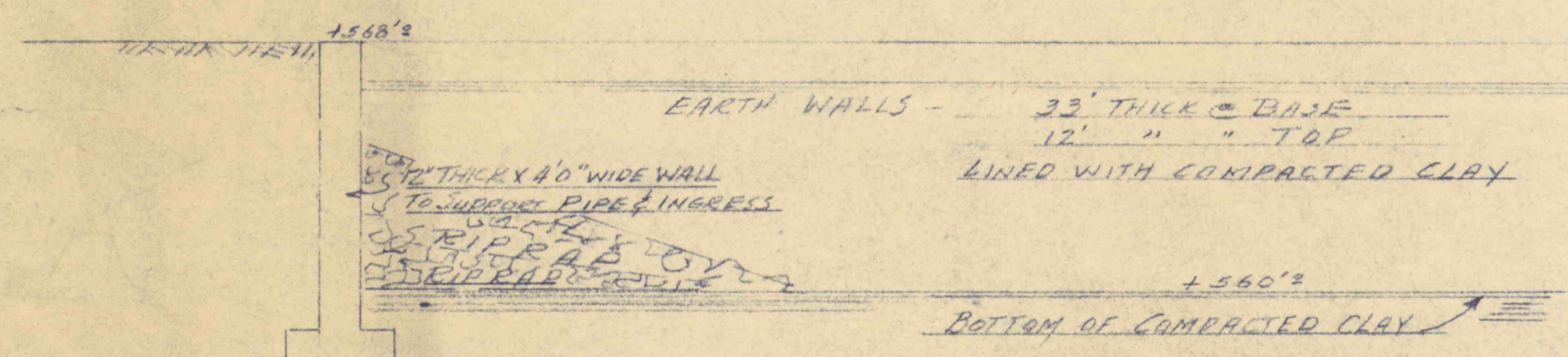


METHOD OF INSTALLING 36" ARMO CONCRETE PIPE
 MAKE CONTINUOUS EVEN GRADE OVER CONCRETE
 CUT TRENCH 12" DEEP BY 4" WIDE - BRICKS
 AND SAND FILL WITH INTERLOCKING CURB OR 3000 PAVEMENT
 SUCH AS PAV. WITH CURB CONTAINING CURB

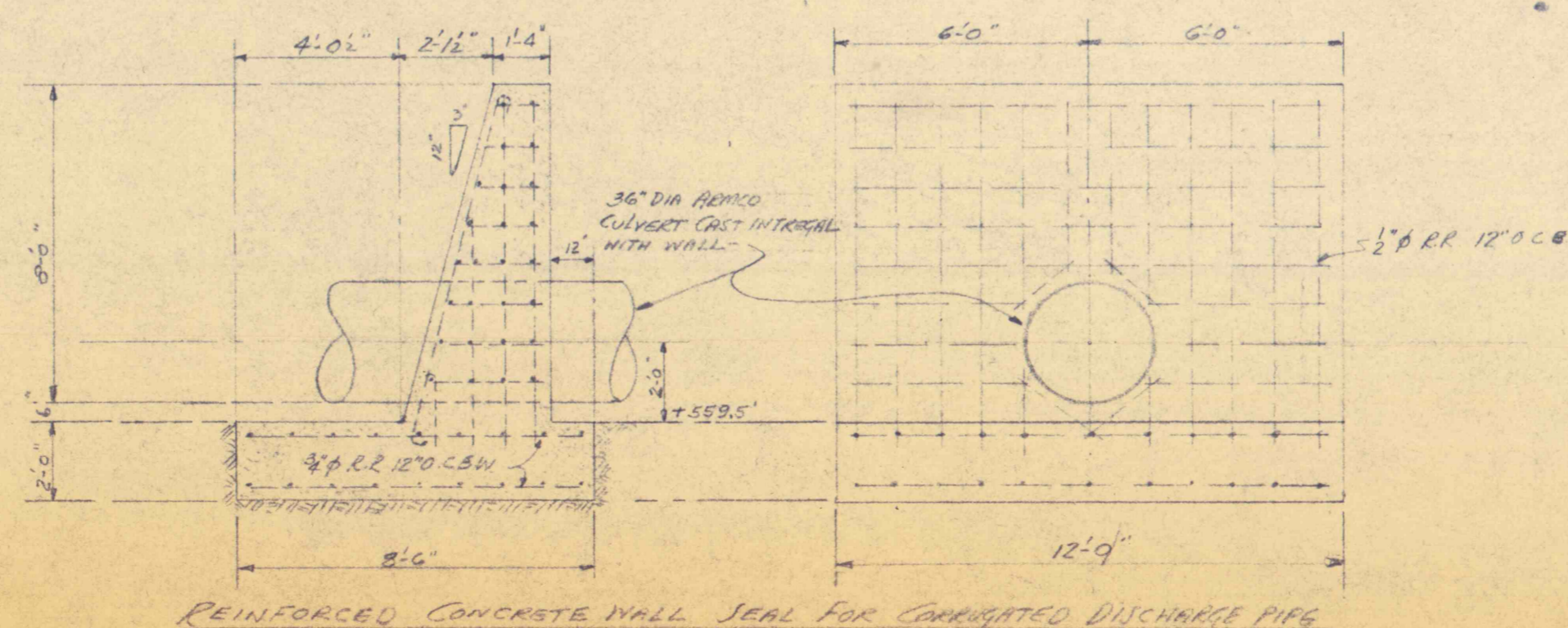
SECTIONS THRU SURGE BASIN
 Scale 1"=20'



SECTION THRU FLOW REGULATING LAGOON



INSTALL 2" THICK BRASS PLATE IN END OF CONVEYER WITH 12" DIA. HOLE LOCATED AS NOTED - ALL SEAMS INCLUDING INTAKE TO BE WATER TIGHT - COAT WITH BITUMEN PAINT WEARING - INSTALL 2" BRASS 6" IN PAULOUT END
 DAM APPROX. 40" THICK @ BOTTOM
 DETAIL THRU DAM WALL SHOWING DISCHARGE



LOCATION OF FLUMES FROM PUMP DISCHARGE TO NEWPORT CREEK - SHOWING HOLDING LAGOON 800HP DEEPWELL PUMP INSTALLATION - GLEN NAN MINE #3 SCOPE - SUTQUEHANNA ANTHRACITE, INC. OCT 28, 1969