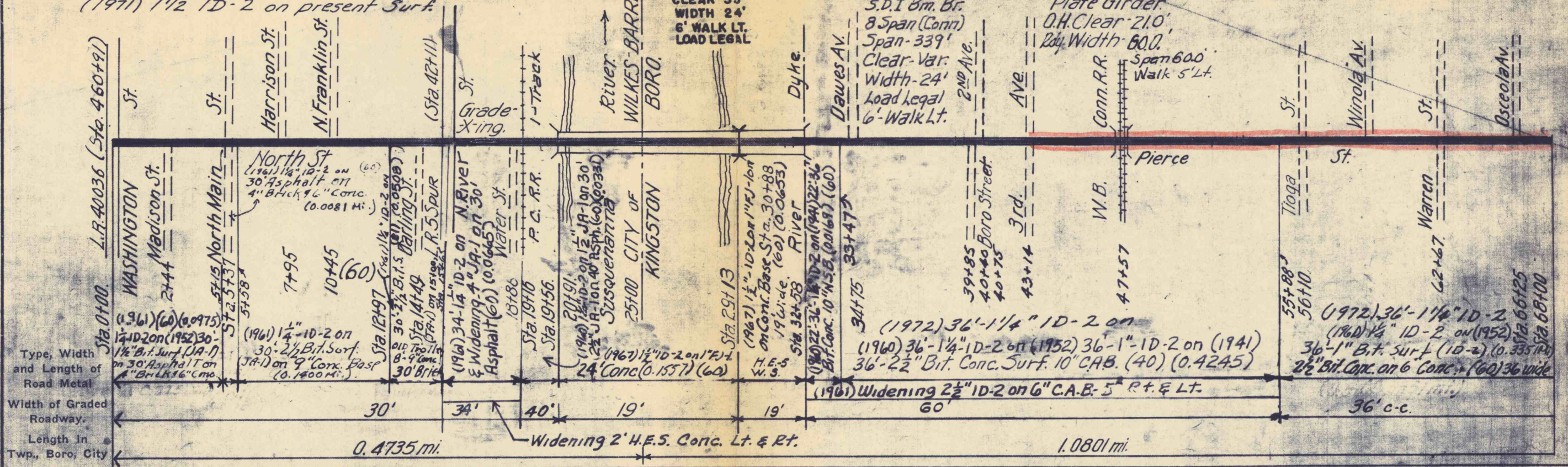


CITY OF WILKES-BARRE

Note: Sta. 0+00 to Sta. 33+47 Place (1971) 1 1/2" ID-2 on present Surf.

MAINTENANCE DISTRICT No. 4-3

COUNTY LUZERNE. LEG. ROUTE NO. 40116 TOTAL LENGTH 1.5538 MILES



KINGSTON BORO.

Note: Trolley area 8-3 from Sta. 55+88 to Sta. 73+57 Paved with 2 1/2" Bit. Conc. on 9" Uniform Conc. Base

LEG. ROUTE NO. 40116 TOTAL LENGTH MILES MAINTENANCE DISTRICT No. 4-3

