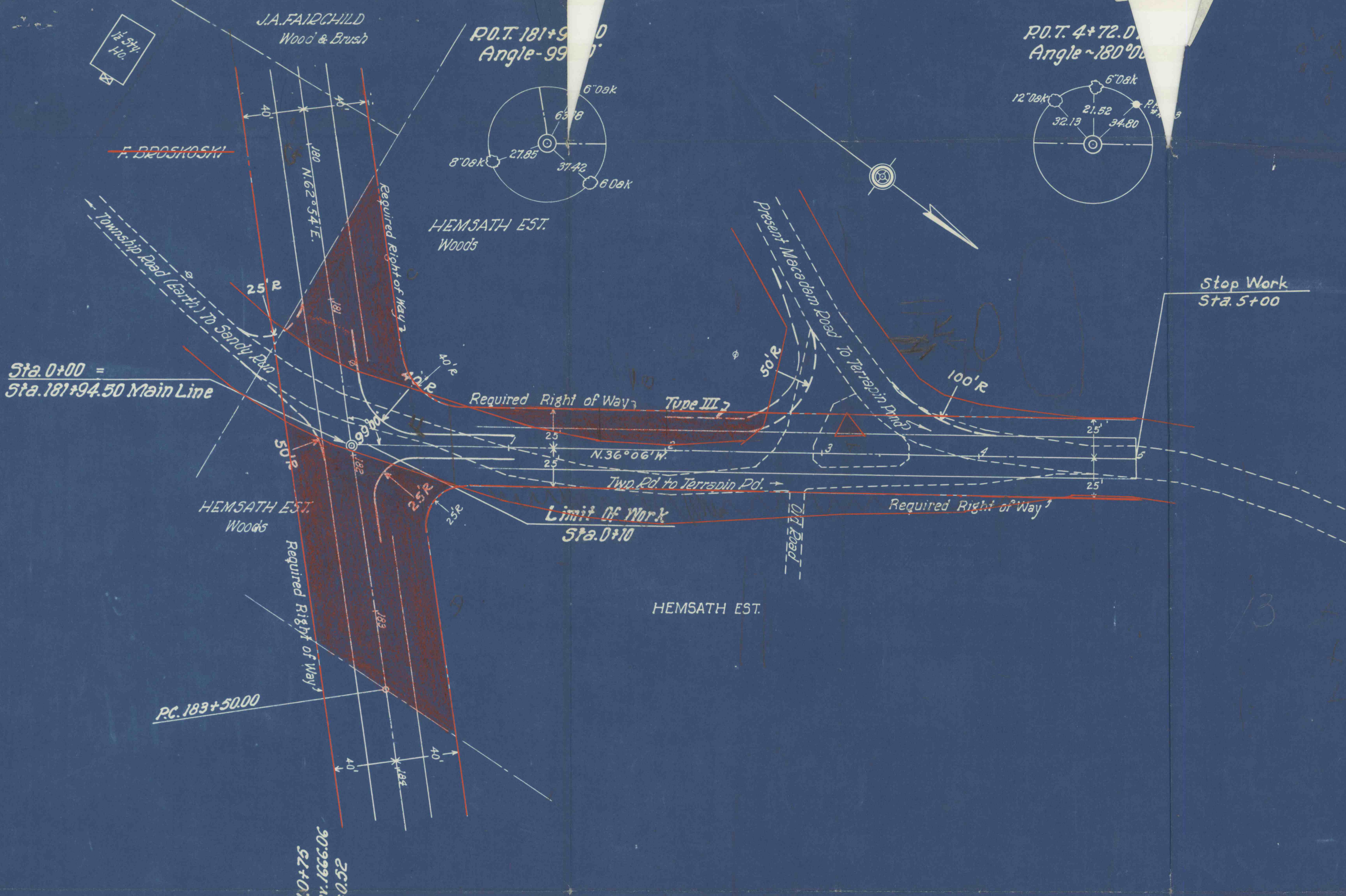


J.A. FAIRCHILD
Wood & Brush

P.O.T. 181+94.50
Angle - 99° 00'

P.O.T. 4+72.00
Angle ~ 180° 00'



Stop Work
Sta. 5+00

Sta. 0+00 =
Sta. 181+94.50 Main Line

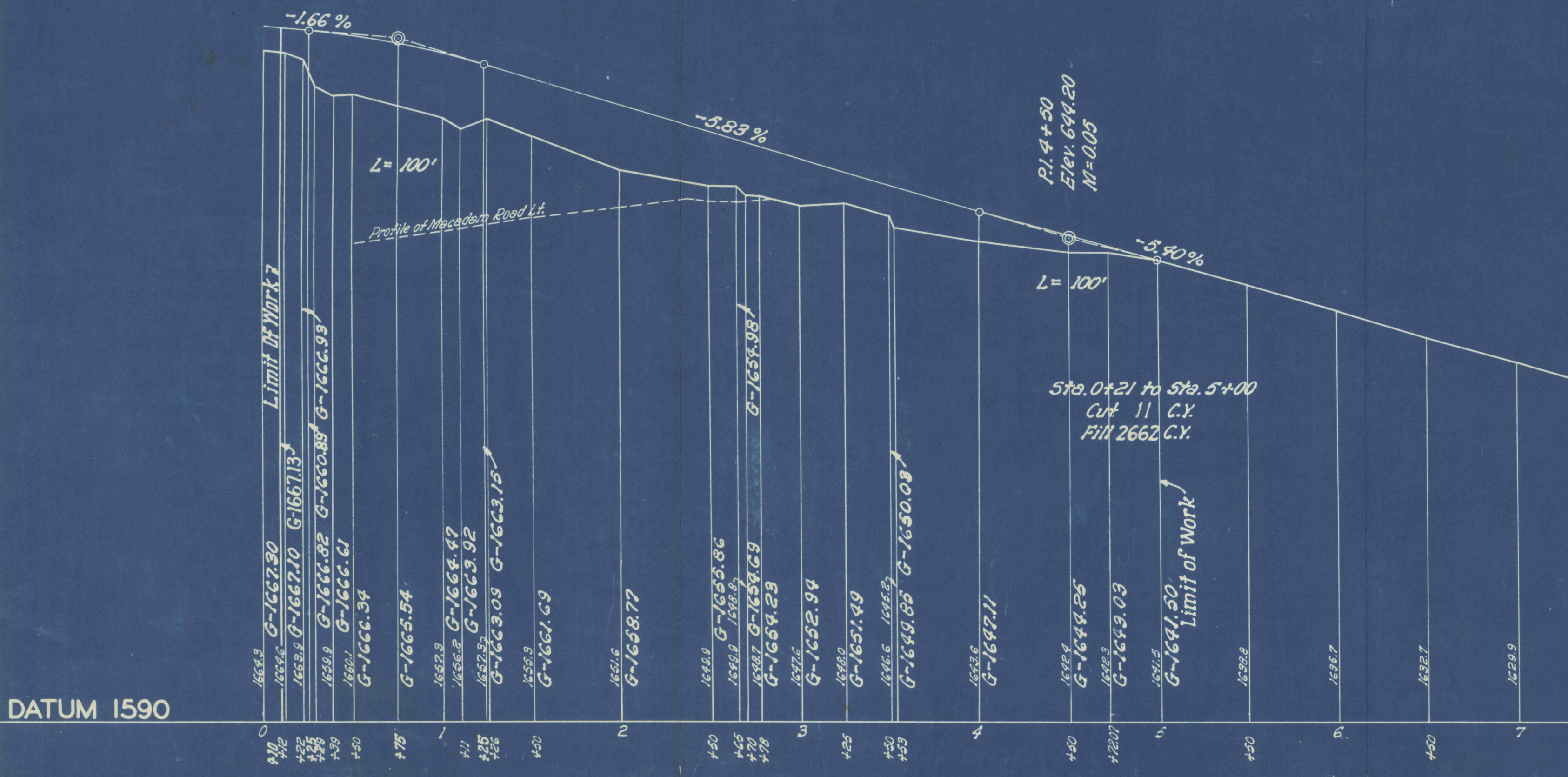
P.C. 183+50.00

Limit of Work
Sta. 0+10

HEMSATH EST.

P.I. 0+75
Elev. 1666.06
M=0.52

P.I. 4+50
Elev. 699.20
M=0.05



DATUM 1590

Sta. 0+21 to Sta. 5+00
Cut 11 C.Y.
Fill 2662 C.Y.

Limit of Work

Limit of Work

0+00 1664.3
 0+02 1664.6 G-1667.30
 0+04 1663.9 G-1667.10 G-1667.13
 0+06 1659.9 G-1666.82 G-1666.88 G-1666.93
 0+08 1659.7 G-1666.61
 0+10 G-1666.34
 0+15 G-1665.54
 0+20 1657.3 G-1664.47
 0+22 1656.2 G-1663.92
 0+24 1652.5 G-1663.09 G-1663.15
 0+26 1655.9 G-1661.69
 0+30 1651.6 G-1658.77
 0+35 1649.9 G-1655.86
 0+37 1649.9 1649.87
 0+39 1648.7 G-1654.69 G-1654.98
 0+41 1647.6 G-1654.29
 0+45 G-1652.94
 0+50 1646.0 G-1651.49
 0+55 1646.5 1646.27
 0+60 G-1649.85 G-1650.03
 0+65 1643.6 G-1647.11
 0+70 1641.4 G-1644.25
 0+75 1638.9 G-1643.03
 0+80 1637.5 G-1641.50
 0+85 1636.8
 0+90 1635.7
 0+95 1632.7
 1+00 1628.9