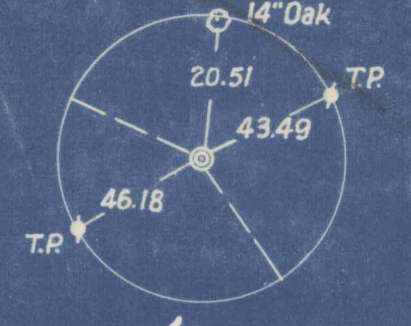
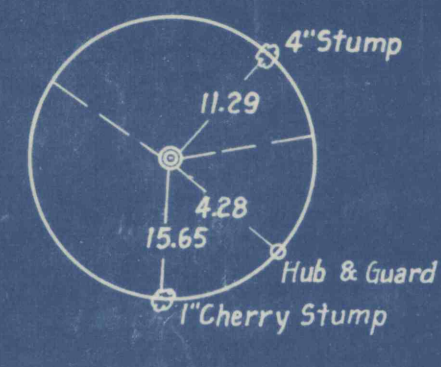


Old P.I. 154 + 23.60  
Angle = 212°27'

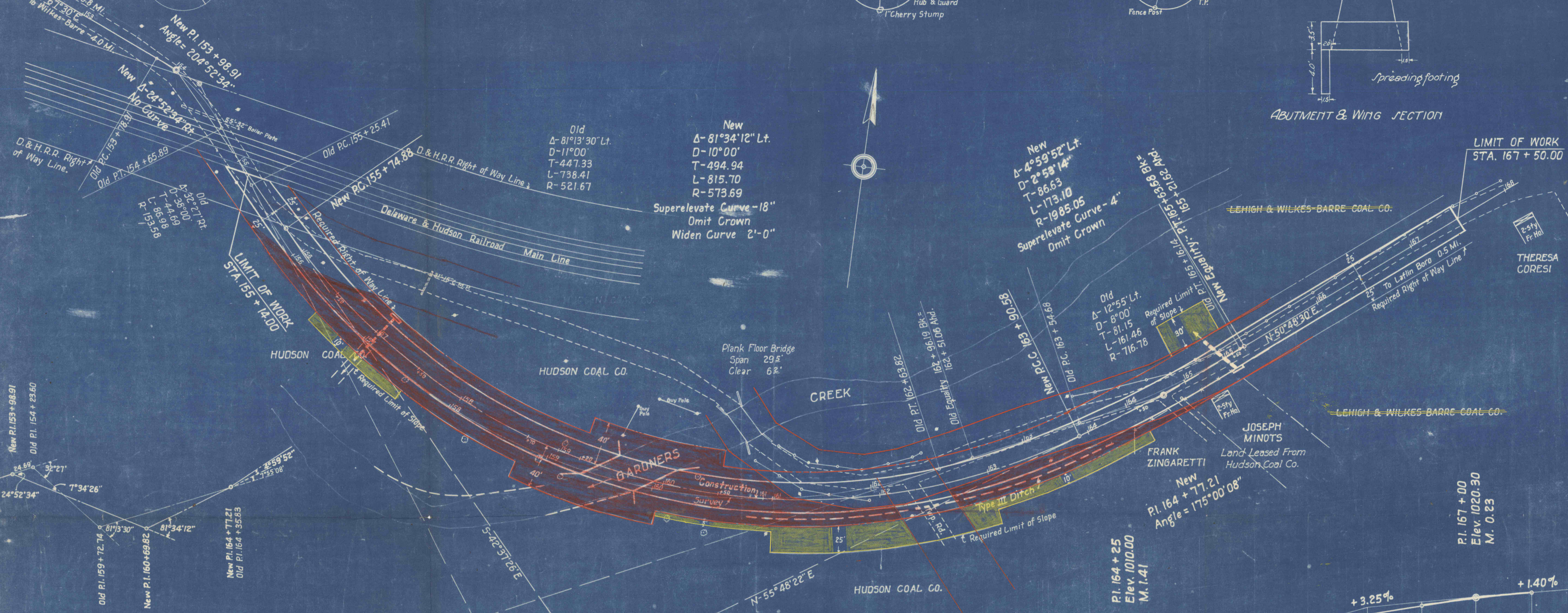
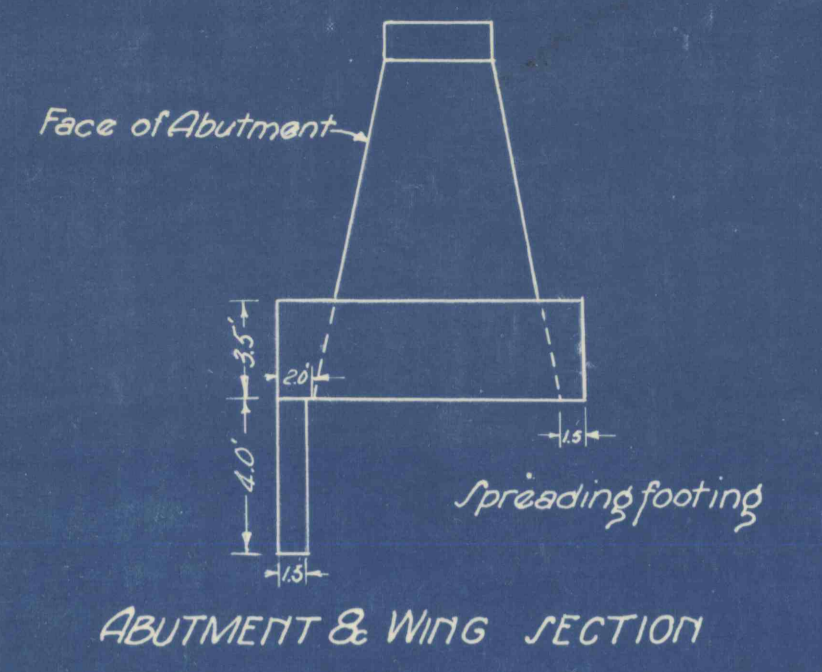
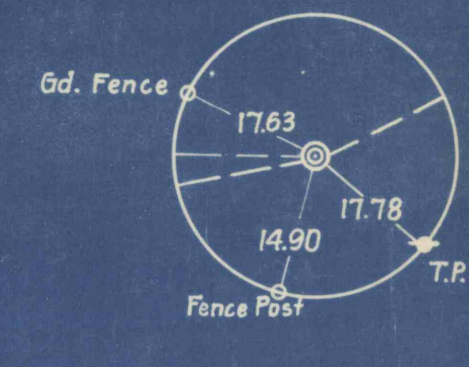
B.M.  
Spike in root of 16" Pine  
40' Lt. of Sta. 151 + 53  
Elev. 1000.00 (Assumed)



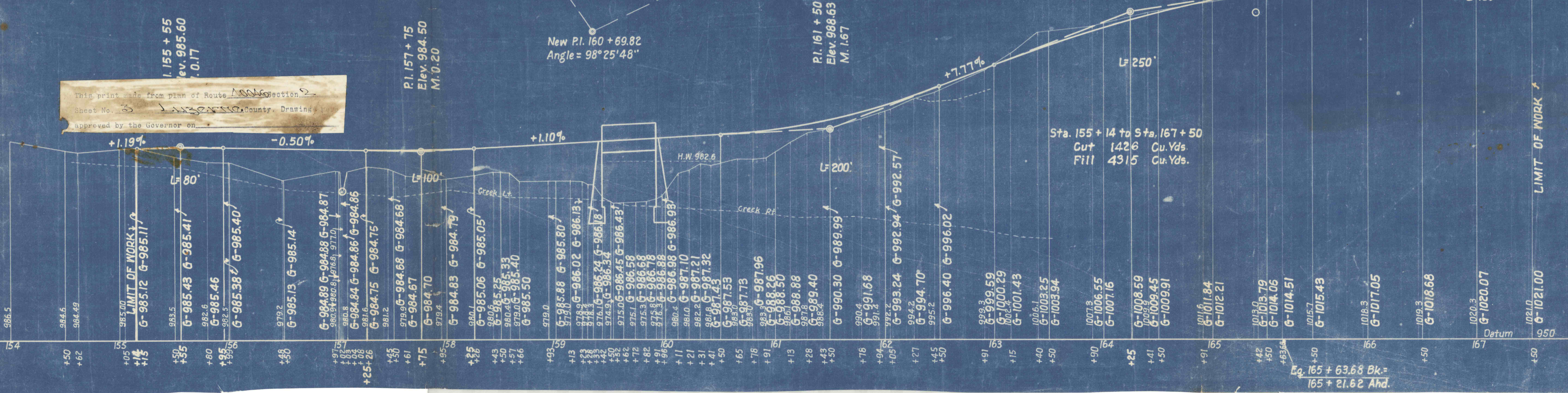
Old P.I. 159 + 27.74  
Angle = 96°46'30"



Old & New P.I. 164 + 35.83  
Angle = 167°05'



LINE SHIFT SKETCH



This print made from plan of Route 1000 Section 2  
Sheet No. 3 Luzerne County, Drawings  
approved by the Governor on