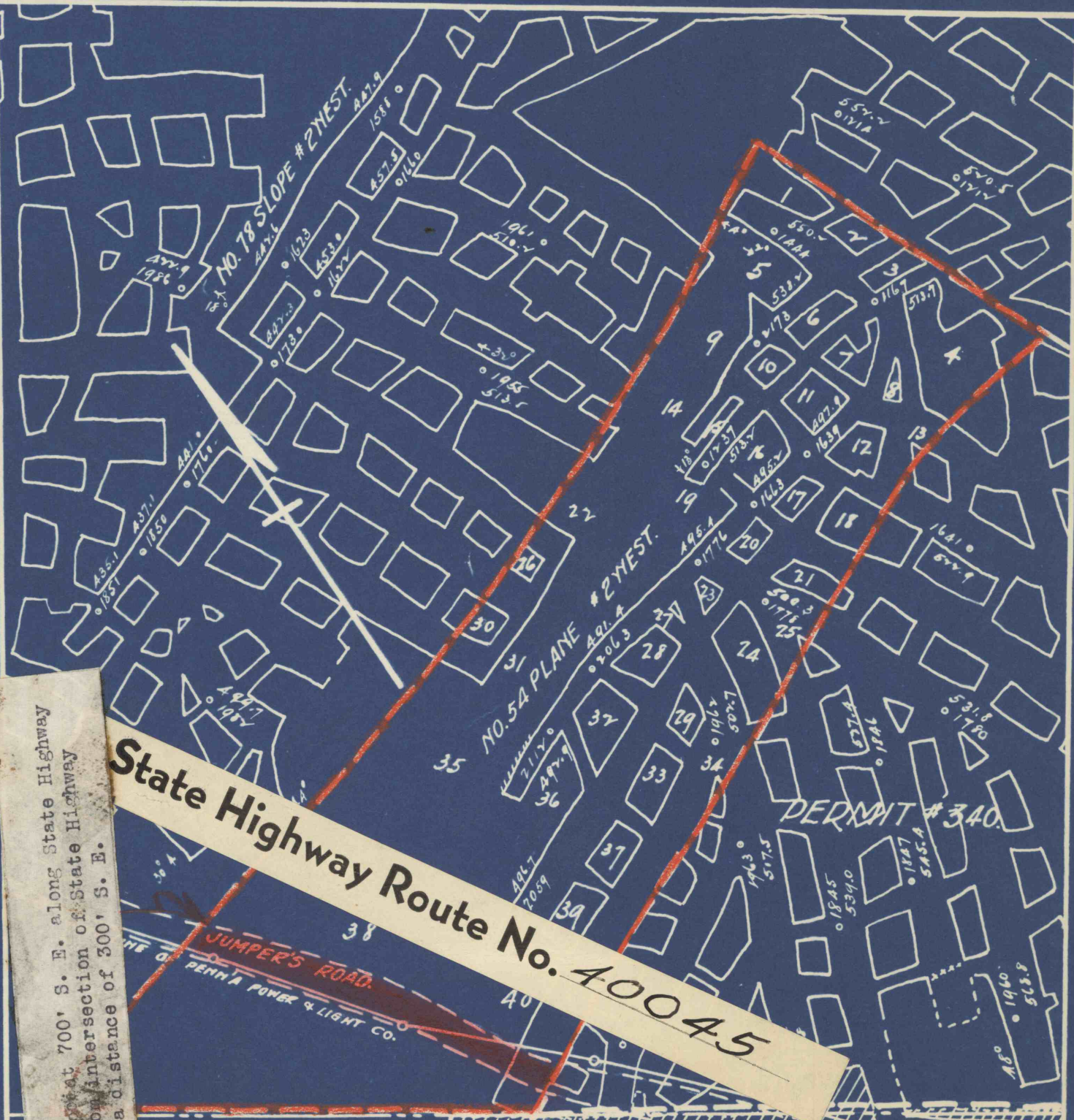


Beginning at a point at 700' S. E. along State Highway
 Route #40045 from intersection of State Highway
 Route #515 for a distance of 300' S. E.

State Highway Route No. 40045



PERMIT # 340

THE HUDSON COAL COMPANY
 DELAWARE COLLIERY
 RED ASH-BED
 P. J. O'Hara Colliery Supt.
 W. W. Wirth Div. Engineer
 Wilkes-Barre, Pa.
 H. H. Otto Cadwallader Evans Jr.
 Mining Engr. Vice Pres. & Gen. Mgr.
 424 Wyoming Ave., Scranton, Pa.
 Date 2/20/41. Scale 1" - 100'