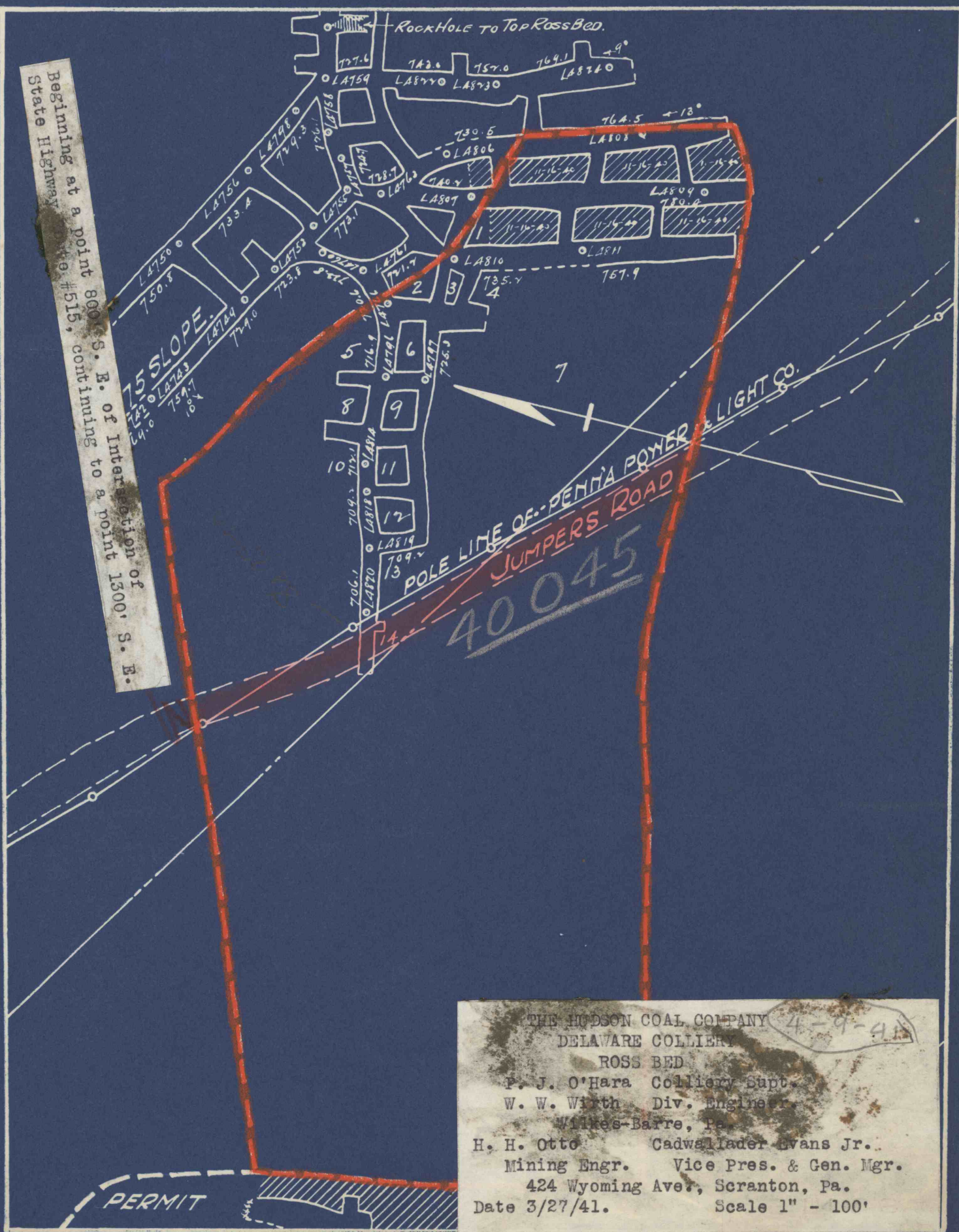


Beginning at a point 800' S. E. of Intersection of State Highway #515, continuing to a point 1300' S. E.



THE HUDSON COAL COMPANY 4-9-41
 DELAWARE COLLIERY
 ROSS BED
 P. J. O'Hara Colliery Supt.
 W. W. Wirth Div. Engineer
 Wilkes-Barre, Pa.
 H. H. Otto Cadwallader Evans Jr.
 Mining Engr. Vice Pres. & Gen. Mgr.
 424 Wyoming Ave., Scranton, Pa.
 Date 3/27/41. Scale 1" - 100'