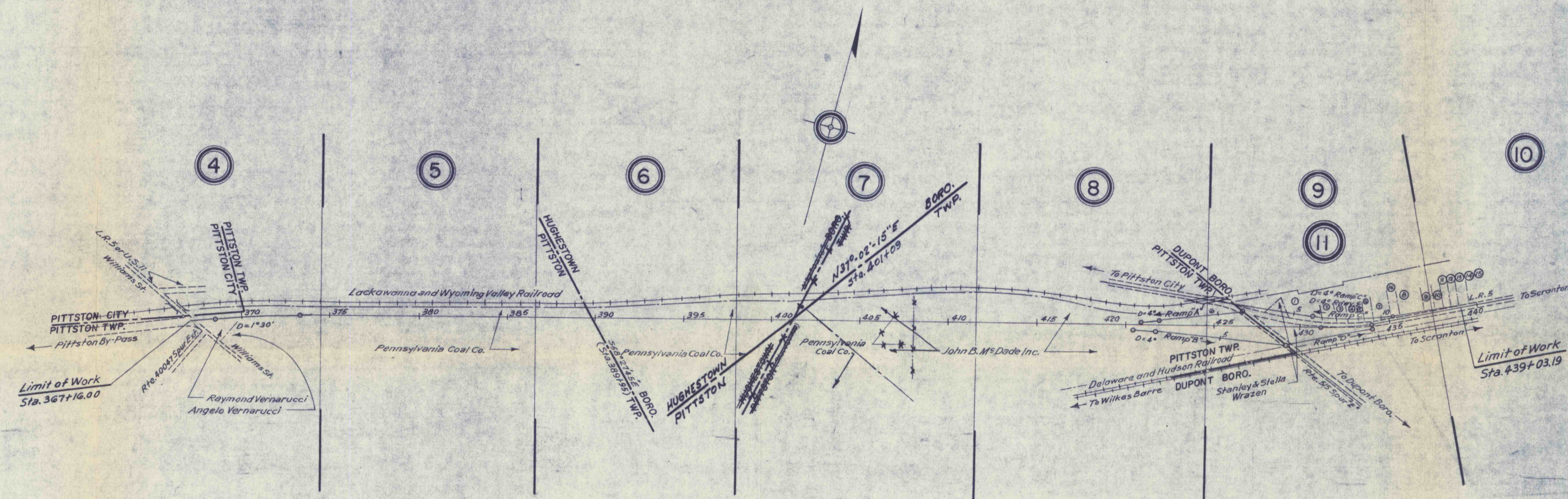
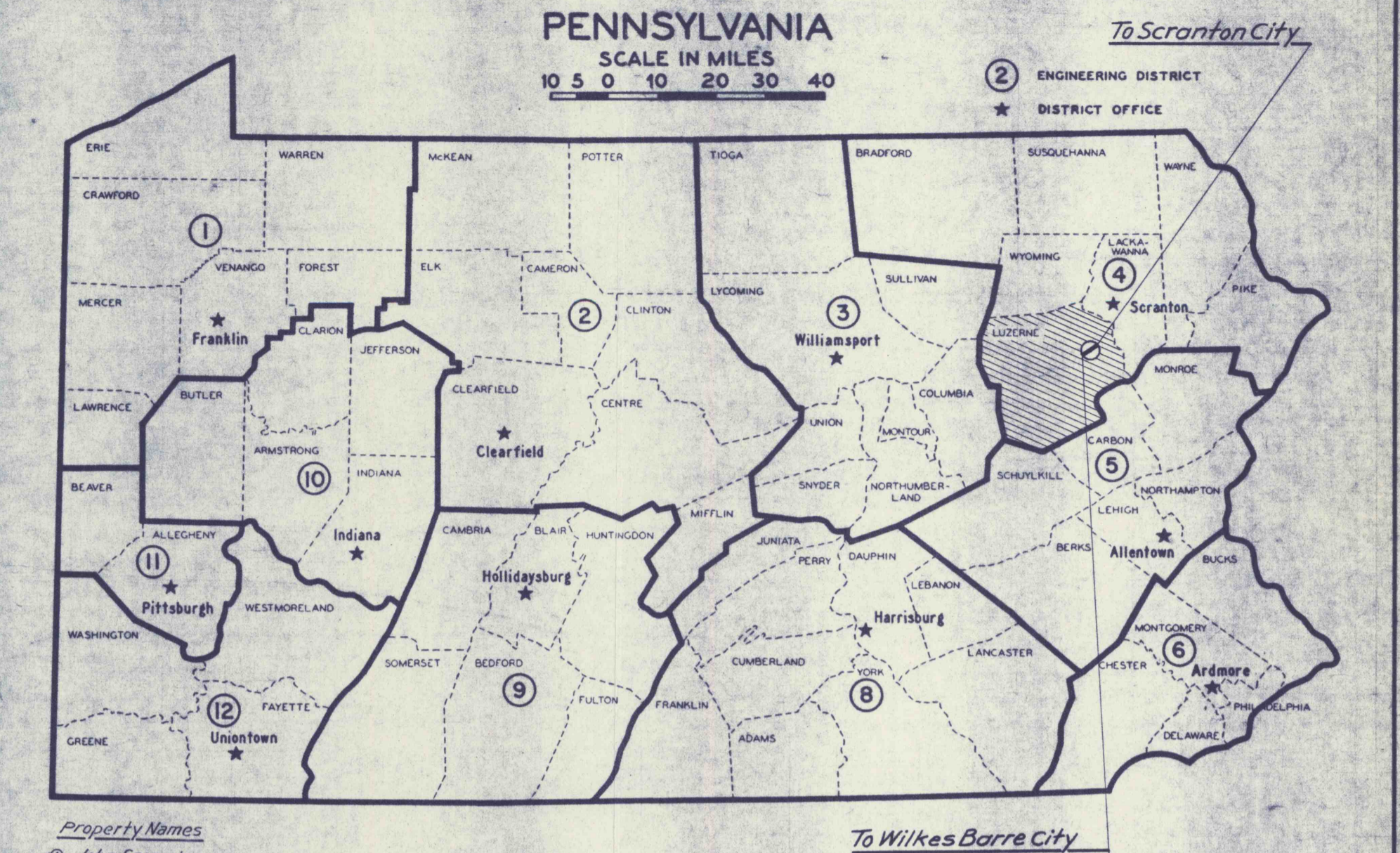


| PUB. RDS. DIV. NO.   | STATE        | FEDERAL PROJECT | FISCAL YEAR | DISTRICT | COUNTY  | ROUTE | SEC. | SHEET   |
|--|--------------|-----------------|-------------|----------|---------|-------|------|---------|
| 2  | PENNSYLVANIA |                 |             | 4-0      | LUZERNE | 40038 | 4    | 2 of 11 |
| Pittston City, Pittston Twp., Hughes town and Dupont Boro.s. |              |                 |             |          |         |       |      |         |



- Property Names**
- ① John Sameska
  - ② Walter Barrowski
  - ③ Heidelberg Sales Co.
  - ④ John Berlinski
  - ⑤ Anthony Wilk
  - ⑥ Patrick & Mary Orogen
  - ⑦ George Czumlant
  - ⑧ Heidelberg Sales Co.
  - ⑨ John & Susan Uzak
  - ⑩ Edward & Catherine Vogue
  - ⑪ William & Lora Preston
  - ⑫ W. Popowski
  - ⑬ George M. & Marcella D. Kasik
  - ⑭ Paul C. & Julia Kasik
  - ⑮ Frank Noll & Rose Marie
  - ⑯ Joseph Barnek

**RECORD OF STATIONS OF EXISTING ROAD TYPES**

Adjacent to Sta. 367+16.00..... Bit Surf Crse. on Cr. Aggr. Base Crse. 48'-0" Wide  
 Sta. 367+16.00 to Sta. 431+50.00..... Relocation  
 Sta. 431+50.00 to Sta. 439+03.19..... Bit Surf Crse. on 20'-0" Conc. & 2'-0" Pl. Cem. Conc. Base Crse.  
 Widening Lt. & Rt. 24'-0" Wide  
 Adjacent to Sta. 439+03.19..... Bit Surf Crse. on 20'-0" Conc. & 2'-0" Pl. Cem. Conc. Base Crse.  
 Widening Lt. & Rt. 24'-0"

**INDEX MAP**  
 SCALE: 1" = 500'