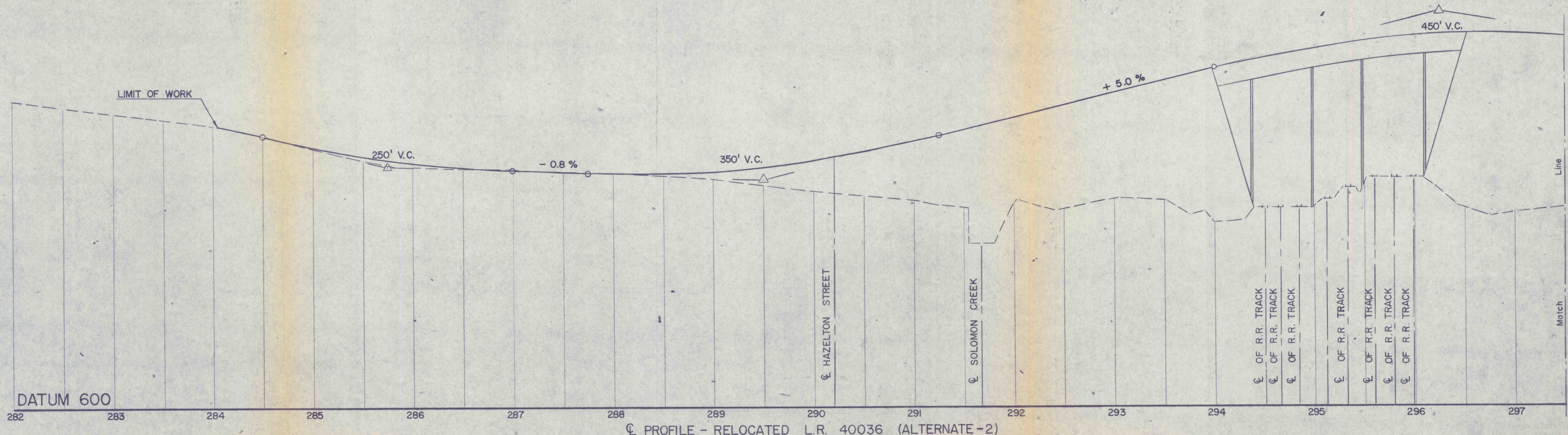
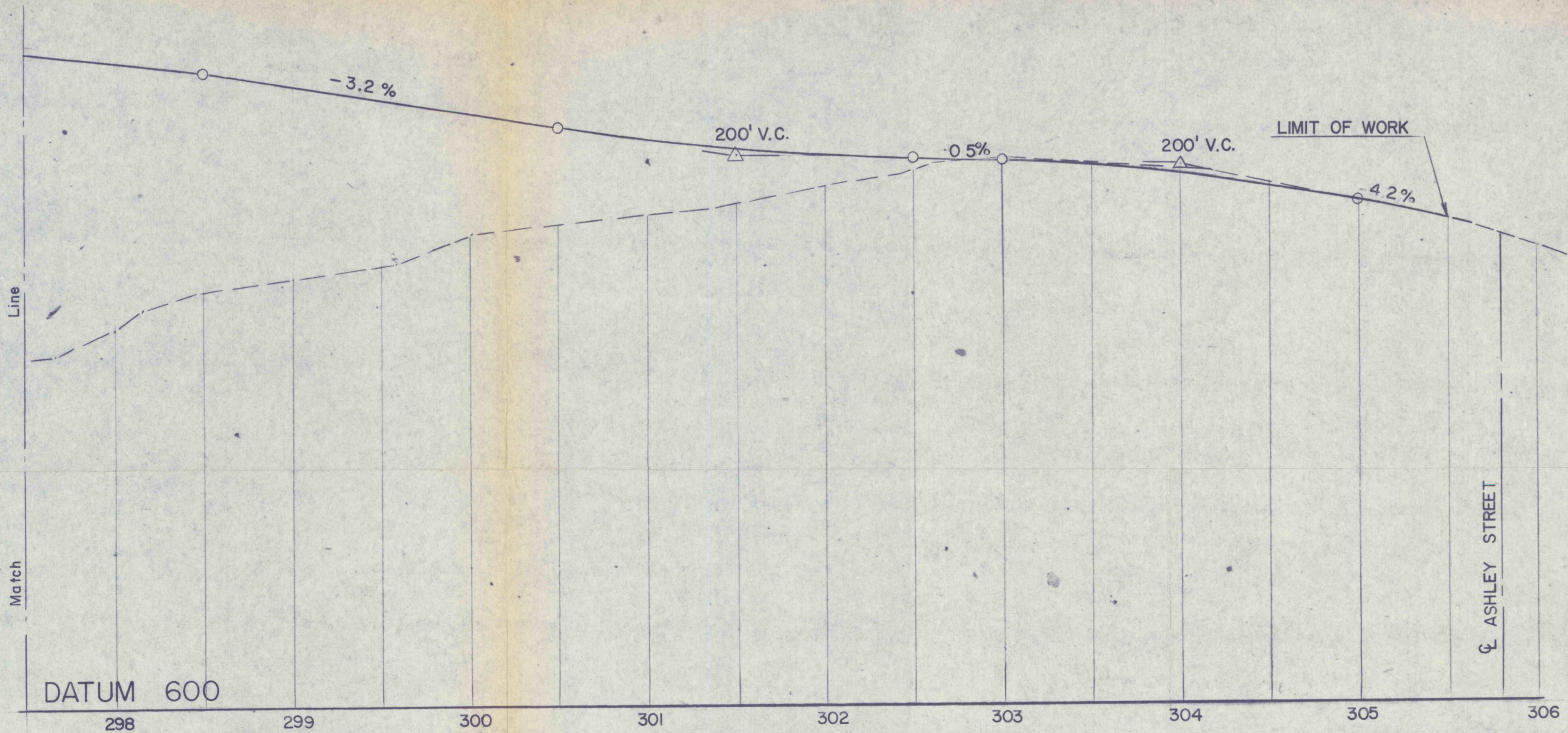


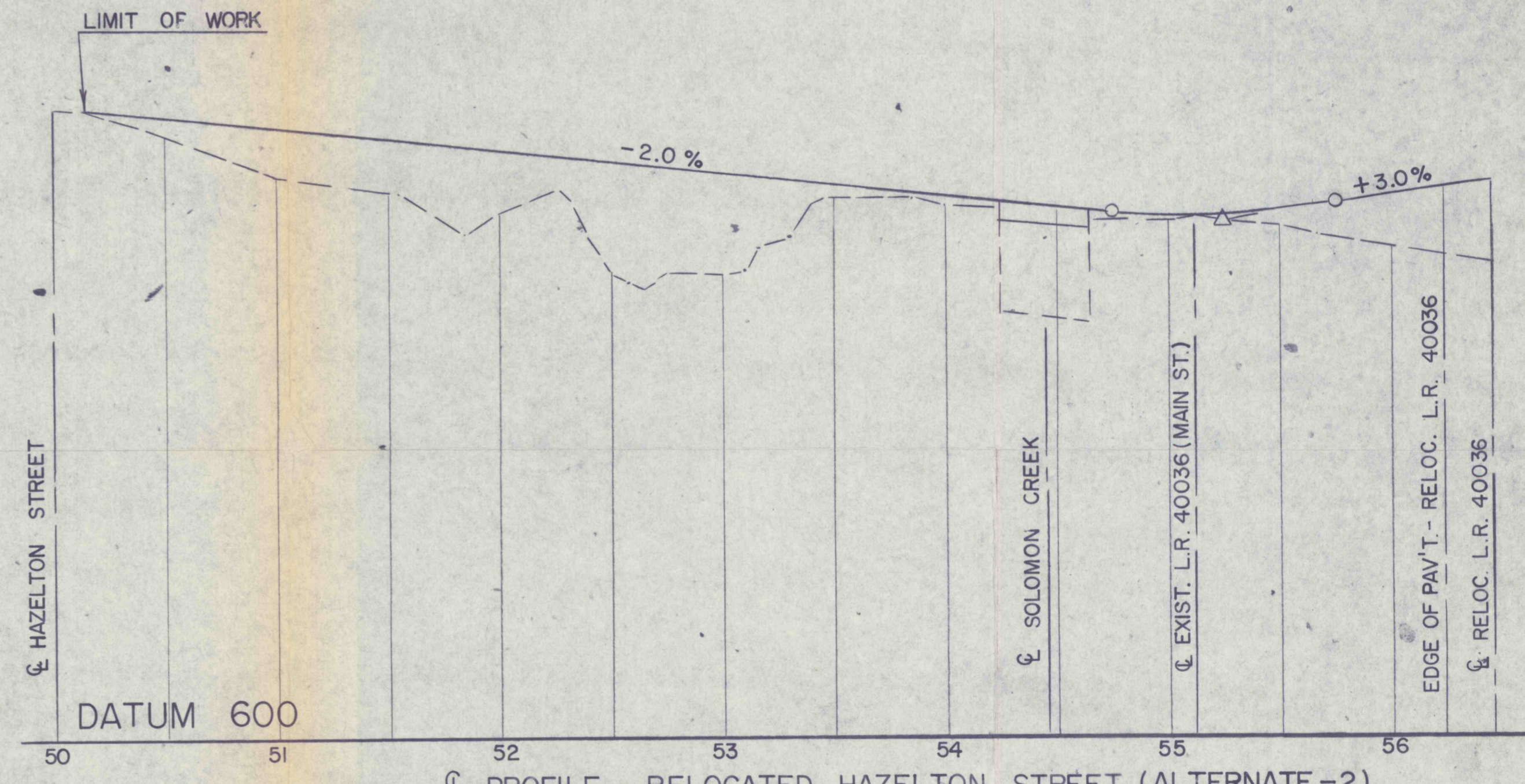
DISTRICT	COUNTY	ROUTE	SECTION	SHEET
4-0	LUZERNE	LR40036		13 of 13
ASHLEY BOROUGH				



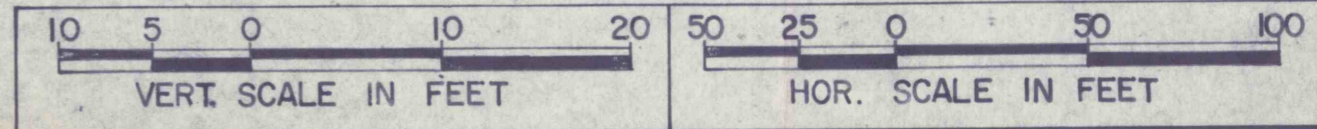
CL PROFILE - RELOCATED L.R. 40036 (ALTERNATE -2)



CL PROFILE - RELOCATED L.R. 40036 (ALTERNATE -2)



CL PROFILE - RELOCATED HAZELTON STREET (ALTERNATE -2)



NORTHEASTERN ENGINEERING CO.
CLARKS SUMMIT, PENNA.