

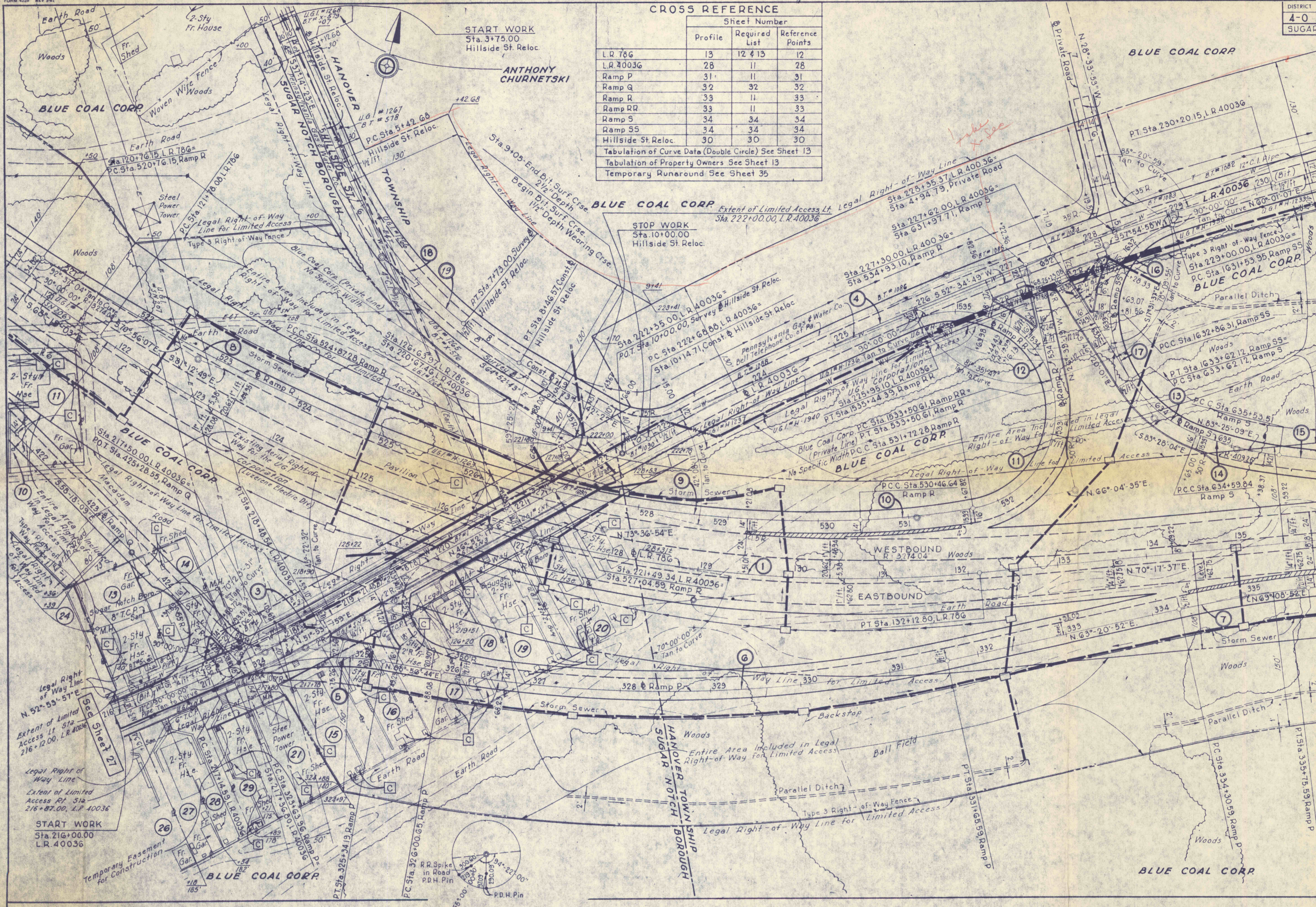
CROSS REFERENCE

Profile	Sheet Number	
	Required List	Reference Points
L.R. 786	13	12 & 13
L.R. 40036	28	11
Ramp P	31	11
Ramp Q	32	32
Ramp R	33	11
Ramp RR	33	11
Ramp S	34	34
Ramp SS	34	34
Hillside St. Reloc.	30	30

Tabulation of Curve Data (Double Circle) See Sheet 13
 Tabulation of Property Owners See Sheet 13
 Temporary Runaround See Sheet 35

REQUIRED LIST

- L. R. 786**
- Sta. 125+00
 - 138 L.F. 18" R.C.C. Pipe, Cl. III
 - 1 Type 4 ft. Inlet (Median)
 - 2 Type H Inlets
 - 43 C.Y. Crse. Aggr. for Pipe Trench B'fill
 - 81 C.Y. Cl. 2 Exc. (Pipe) (Cl. C Bedding)
 - Sta. 127+38
 - 146 L.F. 18" R.C.C. Pipe, Cl. III
 - 1 Type 4 ft. Inlet (Median)
 - 2 Type H Inlets
 - 45 C.Y. Crse. Aggr. for Pipe Trench B'fill
 - 82 C.Y. Cl. 2 Exc. (Pipe) (Cl. C Bedding)
 - Sta. 128+13
 - Item No. 903-0700 Lump Sum
 - Temporary Runaround (Sta. 18+34 to Sta. 24+60)
 - Approximate Work Involved for Information Only
 - 173 C.Y. Cl. 1 Exc.
 - 173 C.Y. Emb.
 - 1,795 S.Y. Bit. Surf. Crse., ID-2A, 2 1/2" Depth
 - 1,896 S.Y. Cr. Aggr. Base Crse.-A, 8" Depth
 - 1,896 S.Y. Subgrade
 - 1,397 L.F. Shoulders
 - 525 L.F. Type 2-B Guard Rail
 - 2 Ea. Terminal Sections, Single
 - See Special Requirements in the Proposal
 - Sta. 130+00
 - 160 L.F. 18" R.C.C. Pipe, Cl. III
 - 2 Type 4 ft. Inlets
 - 1 Type H Inlet (Rt.)
 - 50 C.Y. Crse. Aggr. for Pipe Trench B'fill
 - 98 C.Y. Cl. 2 Exc. (Pipe) (Cl. C Bedding)
 - Sta. 132+50
 - 214 L.F. 30" R.C.C. Pipe, Cl. III
 - 1 Type 4 ft. Inlet (Median)
 - 1 Type H Inlet (Rt.)
 - 107 C.Y. Crse. Aggr. for Pipe Trench B'fill
 - 299 C.Y. Cl. 2 Exc. (Pipe) (Cl. C Bedding)
 - Sta. 135+00
 - 84 L.F. 18" R.C.C. Pipe, Cl. III
 - 1 Type 4 ft. Inlet (Median)
 - 1 Type H Inlet (Rt.)
 - 26 C.Y. Crse. Aggr. for Pipe Trench B'fill
 - 46 C.Y. Cl. 2 Exc. (Pipe) (Cl. C Bedding)
- Required List Continued on Sheet 13
- Sta. 220+67.46, L.R. 43006
 - 2 Span Cont. Steel Multi-Girder Bridge
 - Spans 2 @ 98'-6" c/c Brgs.
 - Min. Actual Clear 14'-1 1/4"
 - Cl. Rdwy. 44'
 - Skew 45° Rt. (Tang to Curve)
 - 3,202 C.Y. Cl. 3 Exc.
 - 370 C.Y. C.A. Cem. Conc.
 - 51 C.Y. Cl. A Cem. Conc.
 - 896 C.Y. Cl. B Cem. Conc.
 - 166,637 Lbs. Reinforcement Bars
 - Item No. 1056-0301 L.S. Downspouting
 - Either 400 L.F. Aluminum Bridge Railing
 - or 400 L.F. Steel Bridge Railing
 - 201 C.Y. Either No. 2B or No. 3A Aggr.
 - 442 L.F. 2" Galvanized Steel Conduit in Structure
 - 1,095 S.Y. Protective Coating for Conc. Bridge Superstructure
 - 1,189 C.Y. Selected Borrow Exc. Struct. B'fill.
 - Either 280 L.F. Perforated V.C. Pipe - Drainage Pipe
 - or 280 L.F. 6" Porous Cem. Conc. Pipe - Drainage Pipe
 - Either 10 L.F. 8" V.C. Pipe - Drainage Pipe
 - or 10 L.F. 8" Porous Cem. Conc. Pipe - Drainage Pipe
 - Item No. 2601-5504 L.S. Installation of Penna Gas & Water Facilities
 - Item No. 1056-0001 L.S. Fob. Struct. Steel (Approx. 306,890')
- S-8689
Approved August 16, 1968



POST 222.41' Ahd. of
 P.I. Sta. 127+19.29, L.R. 786

Align. Book No. 22647, 22656, 23365 & 23367
 Topo. Book No. 15931, 16181 & 16194