

Nanticoke City

REQUIRED LIST
STATE PORTION

Sta. 70+50
32 L.F. 15" R.C.C. Pipe (Connect between Inlets)
15 C.Y. C.I. 2 Exc.
1-Type "E" Inlet Rt.
1-Type "E" Inlet Lt. (Connect to Storm Sewer)

Sta. 71+30 to Sta. 74+78 Lt.
348 L.F. 18" R.C.C. Pipe (Storm Sewer)
201 C.Y. C.I. 2 Exc.

Sta. 71+30 to Sta. 75+30
80 C.Y. C.I. Exc. (Removal of Trolley Ties)

Sta. 71+42 Lt.
1-Type "E" Inlet (Connect to Storm Sewer)

Sta. 71+42 Rt.
1-Type "E" Inlet
12 L.F. 15" R.C.C. Pipe (Connect to Inlet, and Outlet thru Bridge)
6 C.Y. C.I. 2 Exc. (Pipe)

Sta. 72+60 to Sta. 74+25 Lt.
3 C.Y. Emb. - Fill Pocket Lt.

Sta. 72+60 to Sta. 75+81.75
195 C.Y. C.I. Exc. (Old Pavement Removal)

Sta. 72+63 Lt.
1-Type "E" Inlet (Connect to Storm Sewer)

Sta. 75+40
108 L.F. 15" R.C.C. Pipe (Connect to Inlets)
64 C.Y. C.I. 2 Exc. (Pipe)

Sta. 74+94
44 L.F. 15" R.C.C. Pipe (Connect to Inlet)
17 C.Y. C.I. 2 Exc. (Pipe)

Sta. 75+81.75 Rt.
1-Type "E" Inlet

Sta. 71+17.50
ReinP. Conc. Box 5' Sidewalk on Rt.
Span 24' Act. f. Nom. Cl. Min 8.25 Skew 90°
Clear Roadway 32'
4 C.Y. C.I. AA Conc.
212 C.Y. C.I. A Conc.
36 C.Y. C.I. B Conc.
36073 Lbs. ReinP. Bars.
693 S.Y. Pl. Cem Conc. Wearing Surf. for Bridge Floors.
120 C.Y. C.I. 2 Excav.
30 C.Y. Stone Backfill for Structures
5-1595 Appr. July 11, 1949

CITY PORTION
Sta. 71+30 to Sta. 72+20 Lt.
90 L.F. Reset Curb
See Sketch on Sheet #2

Sta. 71+30 to Sta. 75+22 Rt.
402 L.F. Reset Curb
See Sketch on Sheet #2

Sta. 72+40 Drive Lt.
Either 7 Tons Bit Surf Crse. ID-2 (Stone Aggr.)
or 6 Tons Bit Surf Crse. ID-2 (Slag Aggr.)
9 C.Y. Cr. Aggr. Base Crse. "A"
See Sketch on Sheet #2

Sta. 72+66 to Sta. 75+81.75 Lt.
312 L.F. Reset Curb
See Sketch on Sheet #2

Sta. 74+78 Lt.
1-4' Special Inlet
To be placed at end of Storm Sewer

Sta. 75+20
26 L.F. 15" R.C.C. Pipe (Connect to Inlet)
6 C.Y. C.I. 2 Exc. (Pipe)

Sta. 75+25 Rt.
1-Type "E" Inlet

Sta. 75+20
3 C.Y. C.I. Exc. Old Pavement Removal (Over Pipe Trench)
4 C.Y. Cr. Aggr. Base Crse. Type "A" (For Replacement)

Sta. 75+50 Intersection Rt.
Either 29 Tons Bit Surf Crse. ID-2 (Stone Aggr.)
or 25 Tons Bit Surf Crse. ID-2 (Slag Aggr.)
19 C.Y. Cr. Aggr. Base Crse. "A"
See Sketch on Sheet #2

Test Hole #1 32' Lt. Sta. 71+09
Rte. 40033 Nanticoke Boro
Elev. of Old Ground 865.00
Elev. Bottom of Rod 862.12

Per	10	Blows	Elev.
1.05	"	"	861.04
1.65	"	"	859.42
1.24	"	"	858.18
1.00	"	"	856.88
1.47	"	"	855.25
2.4	"	"	853.73
2.0	"	"	852.83
1.15	"	"	852.78
0.00	"	"	852.78
0.00	"	"	854.78

Test Hole #2 27' Rt. Sta. 71+09
Elev. of Old Ground 864.90
Elev. Bottom of Rod 862.70

Per	10	Blows	Elev.
1.65	"	"	862.04
1.18	"	"	860.70
0.92	"	"	859.52
1.75	"	"	858.60
1.44	"	"	855.99
1.87	"	"	854.12
1.10	"	"	853.05
1.25	"	"	852.77
1.80	"	"	852.57
1.40	"	"	852.17
1.38	"	"	851.78
1.33	"	"	851.45
1.46	"	"	850.99
1.41	"	"	850.58
1.36	"	"	850.22
1.32	"	"	849.90
1.45	"	"	849.47
1.25	"	"	849.22
1.26	"	"	848.96
1.29	"	"	848.67
1.35	"	"	848.32
1.45	"	"	847.87
1.40	"	"	847.57
1.24	"	"	847.33
1.12	"	"	847.21
1.21	"	"	847.00
1.27	"	"	846.79
1.17	"	"	846.62
1.28	"	"	845.74
1.39	"	"	845.37
1.27	"	"	845.10
0.00	"	"	845.10

Test Hole #3 33' Lt. Sta. 71+30
Elev. of Old Ground 864.52
Elev. Bottom of Rod 860.10

Per	10	Blows	Elev.
1.02	"	"	859.08
1.68	"	"	858.40
1.04	"	"	857.46
1.25	"	"	856.21
1.69	"	"	855.25
1.12	"	"	855.40
1.13	"	"	855.27
1.11	"	"	855.16
1.11	"	"	855.05
1.95	"	"	854.10
1.80	"	"	853.30
1.56	"	"	852.74
1.45	"	"	852.29
1.51	"	"	851.75
1.56	"	"	851.23
1.42	"	"	850.81
0.53	"	"	850.81
0.00	"	"	850.81

Test Hole #4 29' Rt. Sta. 71+29
Elev. of Old Ground 864.50
Elev. Bottom of Rod 857.97

Per	10	Blows	Elev.
1.45	"	"	856.52
1.03	"	"	855.49
1.24	"	"	854.25
1.30	"	"	854.95
1.46	"	"	854.49
1.43	"	"	854.06
1.42	"	"	853.64
1.45	"	"	853.19
1.53	"	"	852.66
1.29	"	"	852.37
1.23	"	"	852.14
1.15	"	"	851.99
1.16	"	"	851.89
1.22	"	"	851.67
1.24	"	"	851.63
1.02	"	"	851.61
1.03	"	"	851.58
1.02	"	"	851.56
1.04	"	"	851.52
1.11	"	"	851.41
1.14	"	"	851.27
1.32	"	"	850.93
1.34	"	"	850.81
1.48	"	"	850.18
1.32	"	"	849.81
1.17	"	"	849.69
1.23	"	"	849.41
1.07	"	"	849.32
1.95	"	"	848.39
1.40	"	"	848.99
1.51	"	"	848.46
1.40	"	"	848.08
1.42	"	"	848.66
1.61	"	"	848.05
1.47	"	"	844.38

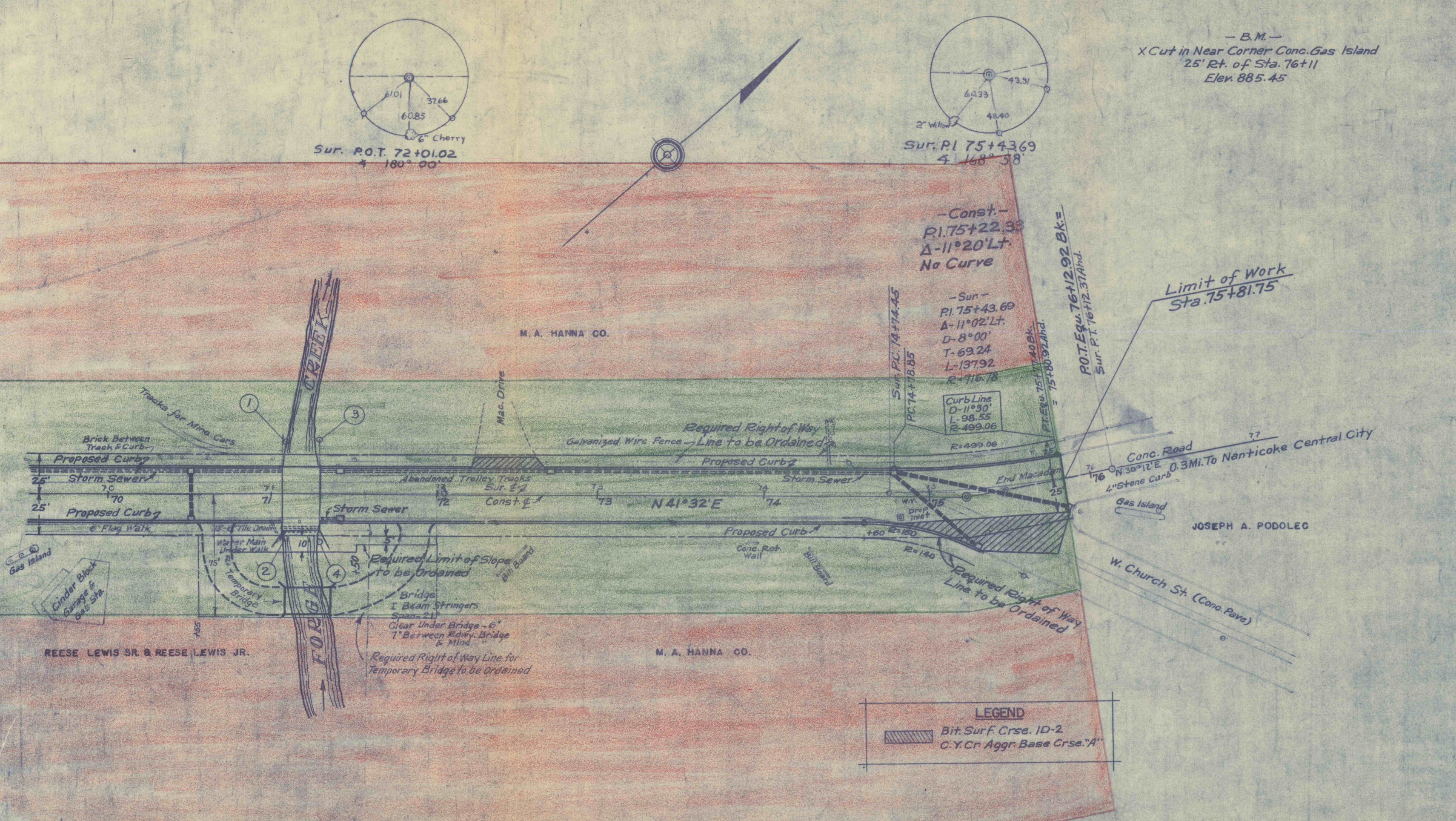
STATE PORTION

Sta. 74+50 to Sta. 75+81.75 Inter.
435 S.Y. 2 1/2 Bit Surf Crse. ID-2
435 S.Y. 10" Cr. Aggr. Base Crse. "B"

Sta. 71+17.5
Removal of existing Bridge Superstr.
Lump Sum Item #40
No materials reserved by the Dept.

Sta. 71+17.5
Two-Lane Temporary Bridge and Approaches - Method I *
Lump Sum Item #39
* Includes one (1) 5-foot Sidewalk

CITY PORTION
Sta. 67+95.56 to Sta. 75+81.75
All inlet castings which are to be removed shall remain the property of the City of Nanticoke, and are to be stored within 1/2 Mi. of the project. Backfill these inlets with old pavement excavation.



LEGEND
Bit Surf Crse. ID-2
C.Y. Cr. Aggr. Base Crse. "A"

LEGEND
Denotes Area Necessary for Lateral and Vertical Support for Vains Within 300 Feet of Surface.
Denotes Area Necessary for Lateral and Vertical Support for All Vains

—SCALE—
Highway Plan - 1"=50'
Color Scheme - 1"=100'

Drainage Area - 5.93 Sq. Mi.
Waterway Area - Required 253.4 Sq. Ft.
Waterway Area - Provided 173.25 "

