

DISTRICT	COUNTY	ROUTE	SEC.	SHEET
4-0	LUZERNE	40033	6	4 of 5

Newport Twp. & Nanticoke City

REQUIRED LIST

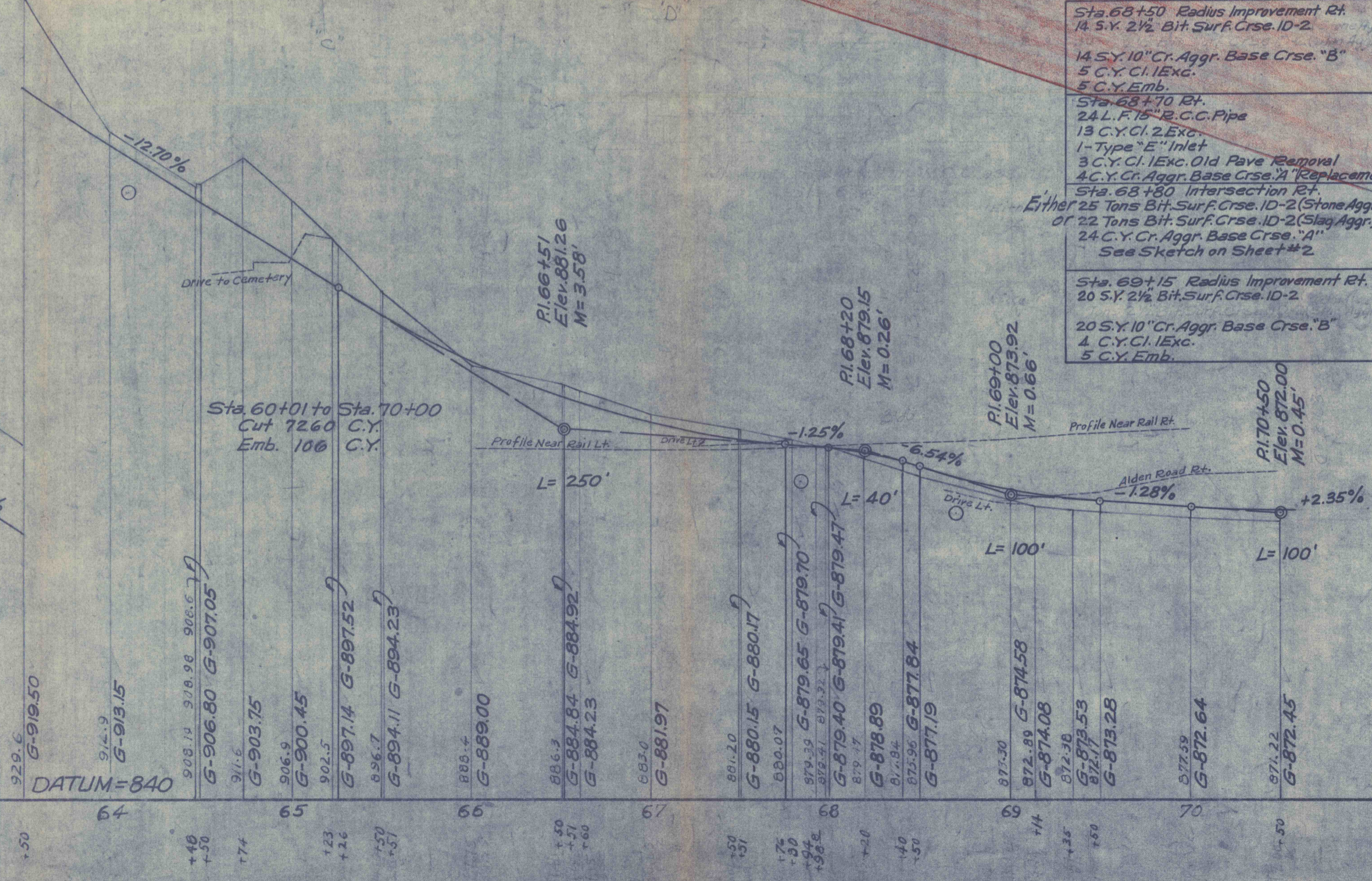
STATE PORTION

- Sta. 63+25 to Sta. 63+75 Rt. 54 C.Y. C.I. Exc. Daylight
- Sta. 63+68 Rt. 1-4' Special Inlet
- Sta. 63+68 to Sta. 64+00 Rt. 38 L.F. 18" R.C.C. Pipe 23 C.Y. C.I. 2 Exc. Across Intersection
- Sta. 63+70 Rt. 22 L.F. Reset Curb Around Radius See Sketch on Sheet #2
- Sta. 63+98 to Sta. 64+50 Rt. 54 L.F. Reset Curb See Sketch on Sheet #2
- Sta. 64+00 Rt. 1-4' Special Inlet
- Sta. 63+80 to Sta. 64+50 Intersection Rt. 125 S.Y. 2 1/2" Bit Surf. Crse. ID-2
- Sta. 64+10 50 L.F. 18" R.C.C. Pipe 30 C.Y. C.I. 2 Exc. (Pipe)
- Sta. 64+13 Lt. 1-4' Special Inlet To be placed at Inlet end of Storm Sewer
- Sta. 64+14 to Sta. 64+58 Lt. 46 L.F. Reset Curb See Sketch on Sheet #2
- Sta. 64+14 to Sta. 67+90 Lt. 382 L.F. 18" R.C.C. Pipe (Storm Sewer) 269 C.Y. C.I. 2 Exc. (Pipe)
- Sta. 64+40 Intersection Lt. 59 S.Y. 2 1/2" Bit Surf. Crse. ID-2
- 59 S.Y. 10" Cr. Aggr. Base Crse. "B" 16 C.Y. C.I. Exc.
- Sta. 64+50 to Sta. 67+68 Rt. 216 S.Y. Pl. Cem. Conc. Curb Gutter Type "B" (5.0' Water Table) 54 C.Y. C.I. Exc.
- Sta. 64+74 to Sta. 66+10 Lt. 87 S.Y. Pl. Cem. Conc. Curb Gutter Type "B" (5.0' Water Table) 21 C.Y. C.I. Exc.
- Sta. 66+10 to Sta. 67+40 Intersection Lt. 150 S.Y. 2 1/2" Bit Surf. Crse. ID-2
- 150 S.Y. 10" Cr. Aggr. Base Crse. "B" 54 C.Y. C.I. Exc.
- Sta. 66+50 to Sta. 67+40 Lt. 92 L.F. Reset Curb See Sketch on Sheet #2
- Sta. 66+70 Drive Rt. Either 170# Bit Surf. Crse. ID-2 (Stone Aggr.) Or 170# Bit Surf. Crse. ID-2 (Slag Aggr.)
- Sta. 66+08 Lt. 1-Type "F" Inlet Connect to Storm Sewer
- Sta. 67+40 to Sta. 67+94 Lt. 35 S.Y. Pl. Cem. Conc. Curb Gutter Type "B" (5.0' Water Table) 9 C.Y. C.I. Exc.
- Sta. 67+45 Drive Rt. Either 5 Tons Bit Surf. Crse. ID-2 (Stone Aggr.) Or 4 Tons Bit Surf. Crse. ID-2 (Slag Aggr.) 9 C.Y. Cr. Aggr. Base Crse. "A" (6" Depth) 12 C.Y. C.I. Exc.
- Sta. 67+80 Drive Lt. 5 C.Y. C.I. Exc.
- Sta. 67+85 30 L.F. 15" R.C.C. Pipe 1-Type 4' Special Inlet Rt. 1-Type 4' Special Inlet Lt. 14 C.Y. C.I. 2 Exc. (Pipe)
- Sta. 67+85 Rt. 10 L.F. 15" R.C.C. Pipe (To drain ditch Rt. into 4' Special Inlet) 3 C.Y. C.I. 2 Exc. (Pipe)
- Sta. 67+90 to Sta. 68+10 Lt. 20 L.F. 18" R.C.C. Pipe (Storm Sewer Under Railroad) 24 C.Y. C.I. 2 Exc.
- Sta. 68+10 to Sta. 71+05 Lt. 296 L.F. 24" R.C.C. Pipe Storm Sewer 309 C.Y. C.I. 2 Exc.

LEGEND
 Bit Surf. Crse. ID-2
 C.Y. Cr. Aggr. Base Crse. "A"
 2 1/2" Bit Surf. Crse. ID-2
 S.Y. 10" Cr. Aggr. Base Crse. "B"

LEGEND
 Denotes Area Necessary for Lateral and Vertical Support for Veins Within 300 Feet of Surface
 Denotes Area Necessary for Lateral and Vertical Support for All Veins.

SCALE
 Highway Plan - 1" = 50'
 Color Scheme - 1" = 100'



DATUM = 890

Station	Elevation	Grade
59+50	971.6	G-971.89
59+55	972.6	G-969.43
59+60	968.25	G-968.25
59+65	969.2	G-966.92
59+70	967.5	G-964.03
59+75	967.3	G-960.80
59+80	966.0	G-956.99
59+85	952.48	G-952.92
59+90	951.4	G-948.35
59+95	946.01	G-946.01
60+00	943.36	G-943.45
60+05	943.7	G-937.94
60+10	944.9	G-936.34
60+15	943.18	G-935.18
60+20	941.2	G-932.10
60+25	936.2	G-927.75
60+30	925.85	G-925.85
60+35	929.6	G-919.50
60+40	914.9	G-913.15
60+45	908.13	G-906.80
60+50	911.5	G-903.75
60+55	906.9	G-900.45
60+60	902.5	G-897.14
60+65	896.7	G-894.11
60+70	885.6	G-889.00
60+75	886.3	G-884.84
60+80	884.23	G-884.23
60+85	883.0	G-881.97
60+90	881.20	G-880.15
60+95	879.3	G-879.65
61+00	879.40	G-879.40
61+05	879.7	G-878.89
61+10	875.96	G-877.84
61+15	877.19	G-877.19
61+20	877.20	G-874.58
61+25	874.08	G-874.08
61+30	873.53	G-873.53
61+35	873.28	G-873.28
61+40	872.39	G-872.64
61+45	871.22	G-872.45

DATUM = 840