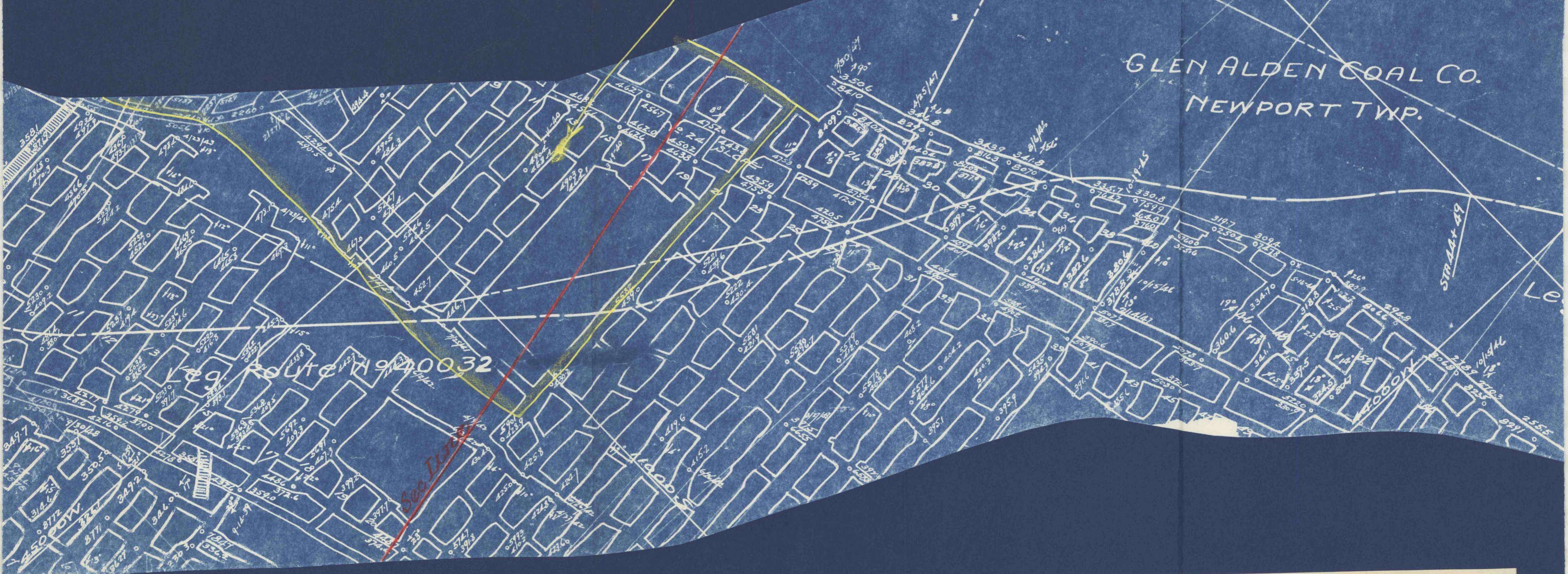


Pillars to be removed
in this area



| | | | |
|---|--------------|----------------------|----------|
| Bottom Hillman | Vein | Wanamie | Colliery |
| Glen Alden Coal Co., Wilkes Barre, Pa. - operator | | | |
| E. T. Powell | Mining Engr. | | |
| J. J. Zimmerman | Supt. | Wanamie | Colliery |
| | Supt. | | Colliery |
| Scale 1" = 100' | | Date April 25, 1955. | |