

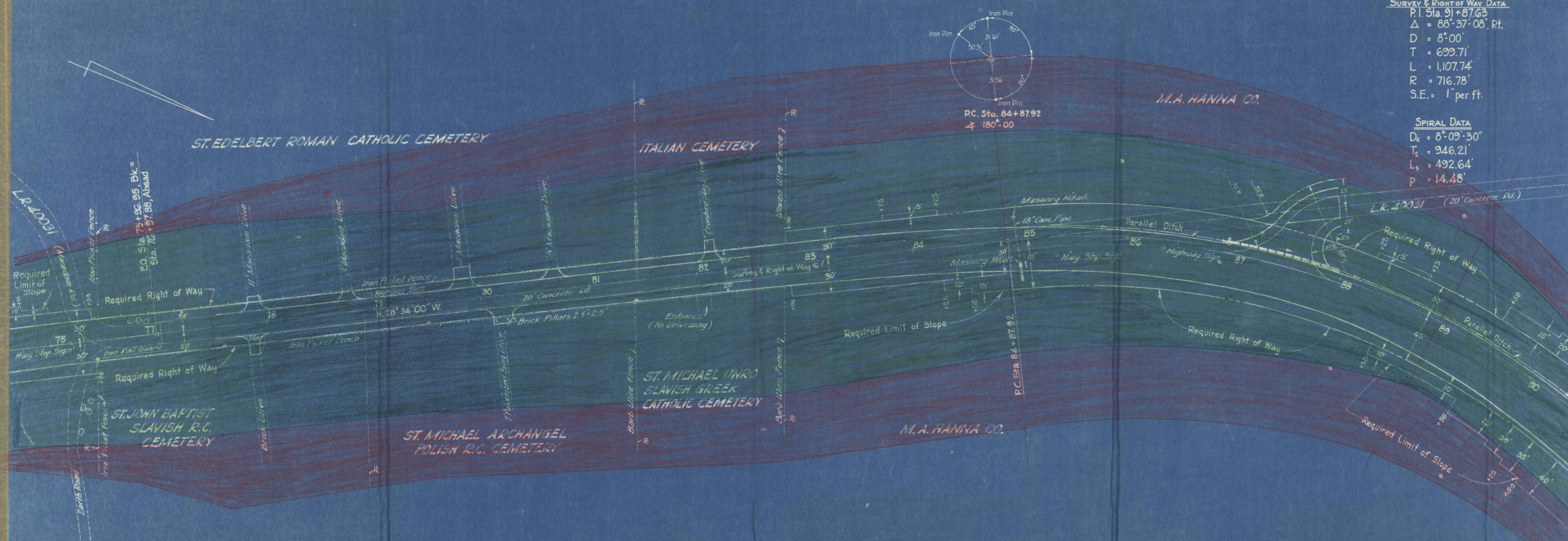
SURVEY & RIGHT OF WAY DATA
 P.I. Sta. 91 + 87.63
 $\Delta = 88^{\circ}37'08''$ Rt.
 $D = 8^{\circ}00'$
 $T = 699.71'$
 $L = 1,107.74'$
 $R = 716.78'$
 S.E. = 1 per ft.

SPIRAL DATA
 $D_s = 8^{\circ}09'30''$
 $T_s = 946.21'$
 $L_s = 492.64'$
 $p = 14.48'$

DISTRICT	COUNTY	ROUTE	SEC.	SHEET
4	LUZERNE	40031	5	8 of 15

REQUIRED LIST

- Either or Sta. 77+86, Drive Rt. 3 Tons Bit.Surf.Crse. ID-2 (Stone or Gravel Aggregate) 2.6 Tons Bit.Surf.Crse. ID-2 (Slag Aggr.) 3 C.Y. Cr. Aggr. Base Crse. Type "A"
- Either or Sta. 77+86, Drive Lt. 3 Tons Bit.Surf.Crse. ID-2 (Stone or Gravel Aggregate) 2.6 Tons Bit.Surf.Crse. ID-2 (Slag Aggr.) 3 C.Y. Cr. Aggr. Base Crse. Type "A"
- Either or Sta. 78+76, Drive Lt. 1.9 Tons Bit.Surf.Crse. ID-2 (Stone or Gravel Aggregate) 1.7 Tons Bit.Surf.Crse. ID-2 (Slag Aggr.) 2 C.Y. Cr. Aggr. Base Crse. Type "A"
- Either or Sta. 79+86, Drive Lt. 3.8 Tons Bit.Surf.Crse. ID-2 (Stone or Gravel Aggregate) 3.3 Tons Bit.Surf.Crse. ID-2 (Slag Aggr.) 4 C.Y. Cr. Aggr. Base Crse. Type "A"
- Either or Sta. 80+17, Drive Rt. 3.1 Tons Bit.Surf.Crse. ID-2 (Stone or Gravel Aggregate) 2.7 Tons Bit.Surf.Crse. ID-2 (Slag Aggr.) 3 C.Y. Cr. Aggr. Base Crse. Type "A"
- Either or Sta. 80+68, Drive Lt. 3.2 Tons Bit.Surf.Crse. ID-2 (Stone or Gravel Aggregate) 2.8 Tons Bit.Surf.Crse. ID-2 (Slag Aggr.) 2 C.Y. Cr. Aggr. Base Crse. Type "A"
- Either or Sta. 82+12, Drive Lt. 4.5 Tons Bit.Surf.Crse. ID-2 (Stone or Gravel Aggregate) 3.9 Tons Bit.Surf.Crse. ID-2 (Slag Aggr.) 4 C.Y. Cr. Aggr. Base Crse. Type "A"
- Sta. 84+95, Rt.
20 L.F. 18" R.C.C. Pipe, (Conn. to Exist. Pipe)
13 C.Y. Cl. 2 Exc., (Pipe)
- Sta. 85+20 to Sta. 86+90, Lt.
32 C.Y. Cl. 2 Exc., (Par. Ditch) W = 18"
- Sta. 85+60 to Sta. 87+75, Lt.
80 C.Y. Cl. 1 Exc., (Pav't. Removal)
- Sta. 86+90 to Sta. 87+95, Lt.
106 L.F. 15" R.C.C. Pipe
06 C.Y. Cl. "B" Conc., Type "D" Edw.
38 C.Y. Cl. 2 Exc., (Pipe & Edw.)
- Sta. 87+56, Lt., Connection to Existing Rd.
306 S.Y. 2 1/2" Bit.Surf. Crse. ID-2
313 S.Y. 10" Cr. Aggr. Base Course, Type "A"
313 S.Y. Subgrade
73 L.F. Shoulders
50 C.Y. Cl. 1 Exc.
34 C.Y. Emb.
- Sta. 87+95 to Sta. 91+50, Lt.
74 C.Y. Cl. 2 Exc., (Par. Ditch) W = 18"
- Sta. 85+30 to Sta. 86+90, Lt.
74 C.Y. Cl. 1 Exc., (Widened Cut)
- Sta. 87+95 to Sta. 97+12 Lt.
3502 C.Y. Cl. 1 Exc., (Widened Cut)



SCALE
 Highway Plan - 1" = 50'
 Color Scheme - 1" = 100'

LEGEND
 Denotes Area Necessary for Lateral and Vertical Support for Veins Within 300 Foot of Surface
 Denotes Area Necessary for Lateral and Vertical Support for All Veins

