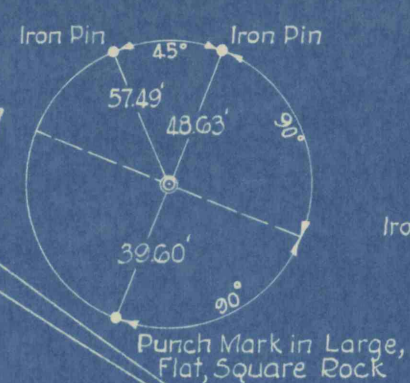
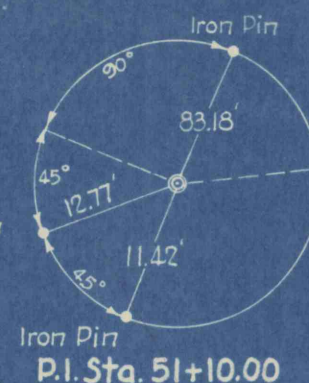


P.C. Sta. 48+31.27
 $\Delta 180^{\circ}00'$



Punch Mark in Large, Flat, Square Rock



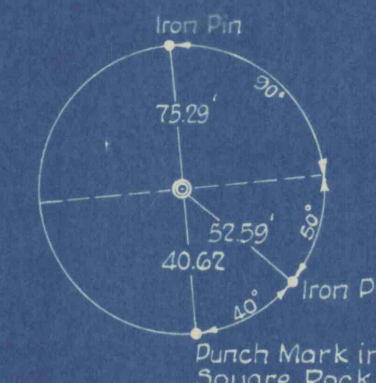
Punch Mark in Flat, Square Rock

SURVEY & RIGHT OF WAY DATA

P.I. Sta. 51+10.00
 $\Delta = 27^{\circ}20'00''$, Lt
 $D = 5^{\circ}10'00''$
 $T = 278.73'$
 $L = 546.67'$
 $R = 1146.28'$
 $S.E. = \frac{15}{16}$ per Ft.

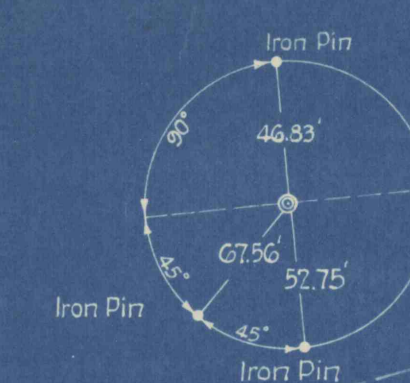
Spiral Curve Data

$D_c = 5^{\circ}00'46''$
 $T_s = 428.44'$
 $L_s = 299.35'$
 $p = 3.27$



Punch Mark in Flat, Square Rock

P.T. Sta. 53+77.94
 $\Delta 180^{\circ}00'$



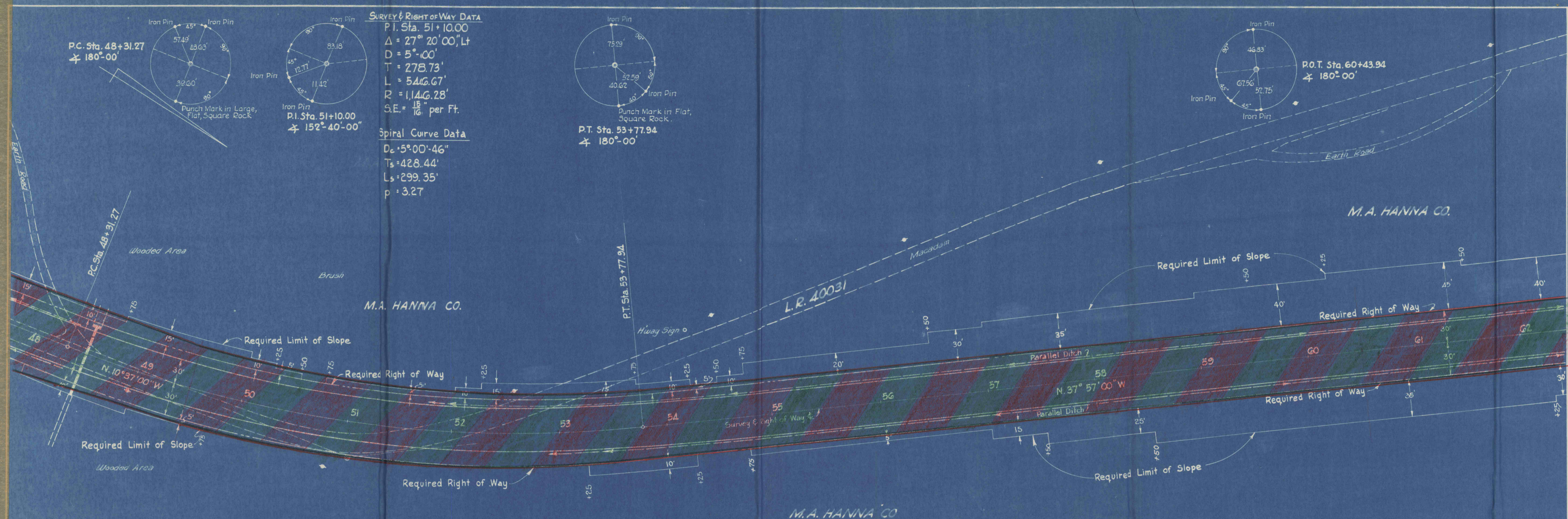
Punch Mark in Flat, Square Rock

P.O.T. Sta. 60+43.94
 $\Delta 180^{\circ}00'$

| DISTRICT | COUNTY | ROUTE | SEC. | SHEET |
|----------|---------|-------|------|---------|
| 4 | LUZERNE | 40031 | 5 | 6 of 15 |

REQUIRED LIST

- Sta. 48 + 50
 - 66 L.F. 18" R.C.C. Pipe
 - 06 C.Y. Cl. B' Conc., Type "D" Edw., Lt.
 - 42 C.Y. Cl. 2 Exc., (Pipe & Edw.)
 - 3 C.Y. Cl. 2 Exc., (Inlet Ditch)
 - 88 C.Y. Cl. 2 Exc., (Out. Ditch) 8' Bottom
- Sta. 51 + 75 to Sta. 69 + 20
 - 361 C.Y. Cl. 2 Exc., (Par. Ditch, Lt.) W=18"
- Sta. 52 + 90 to Sta. 64 + 64
 - 239 C.Y. Cl. 2 Exc., (Par. Ditch, Rt.) W=18"
- Sta. 51 + 80 to Sta. 68 + 90, Lt.
 - 4837 C.Y. Cl. 1 Exc., (Widened Cut)
- Sta. 53 + 13 to Sta. 64 + 60, Rt.
 - 2,616 C.Y. Cl. 1 Exc., (Widened Cut)



SCALE
 Highway Plan - 1" = 50'
 Color Schema - 1" = 100'

LEGEND

- Denotes Area Necessary for Lateral and Vertical Support for Veins Within 300 Feet of Surface.
- Denotes Area Necessary for Lateral and Vertical Support for All Veins.

