

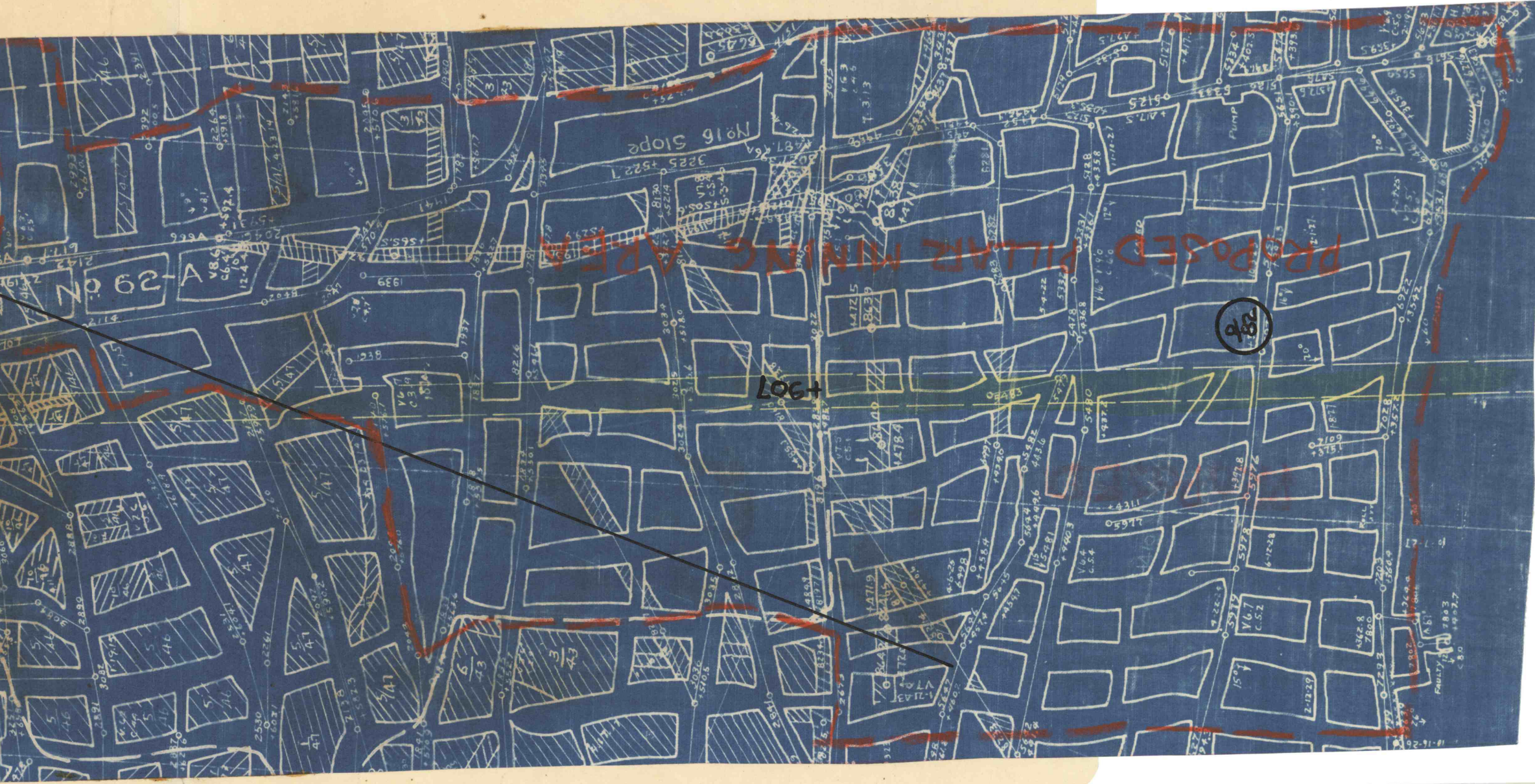
Highway
Proposed Mining

SUSQUEHANNA COLLIERIES CO.
GLEN LYON COLLIERY
PRINT SHOWING PROPOSED MINING
IN TWIN SEAM IN RELATION TO
STATE HIGHWAY NO. 40031

SCALE 1"-100' JULY 23, 1947

3

LA-1-8



28