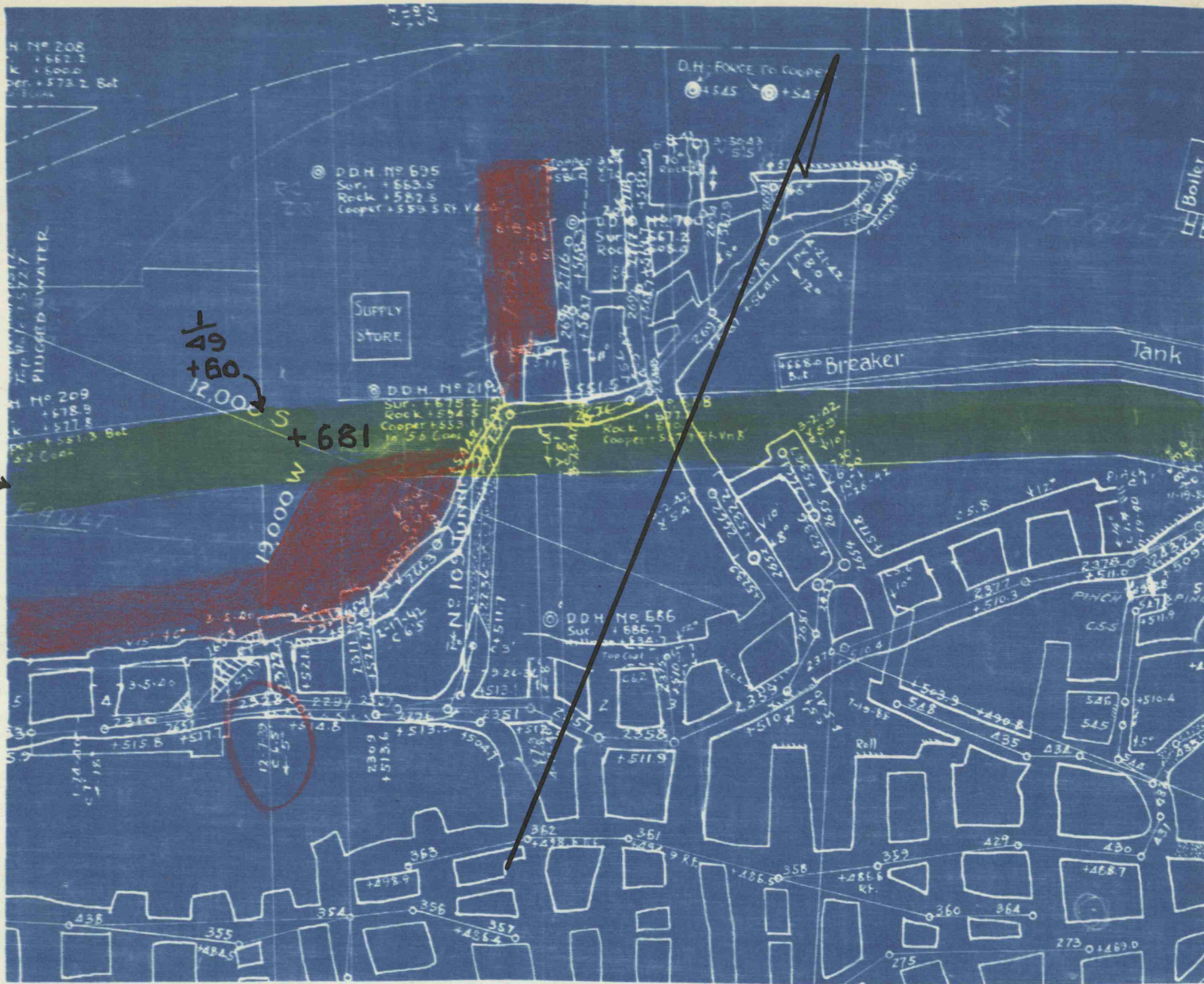




$\frac{1}{46}$
+85

$\frac{1}{49}$
+60
12.000 S

+681

681
 $\frac{551}{130}$ Dy



-  Highway
-  Proposed Mining

SUSQUEHANNA COLLIERIES CO.
GLEN LYON COLLIERY
PRINT SHOWING PROPOSED MINING
IN COOPER SEAM IN RELATION TO
STATE HIGHWAY NO. 40031.

Scale 1"-100'. July 23, 1943

2nd Miles