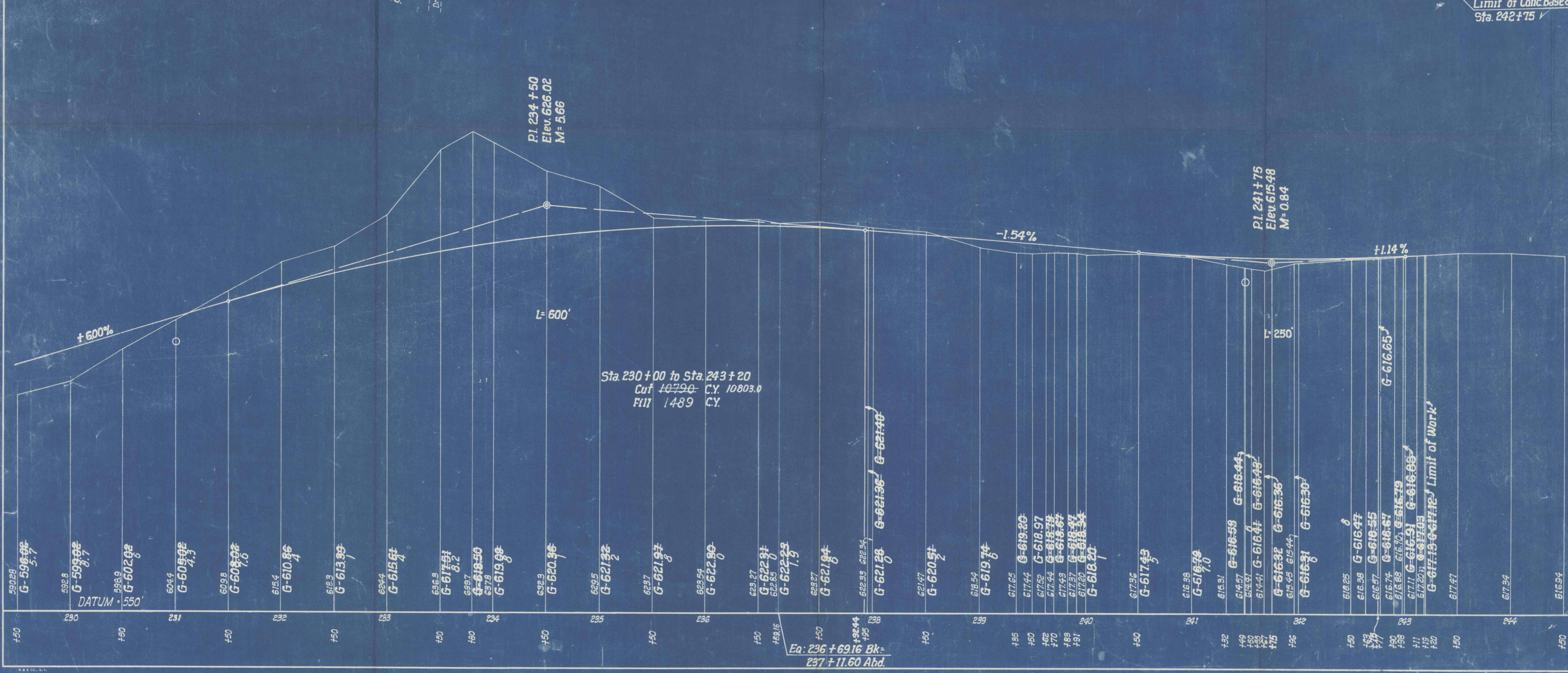
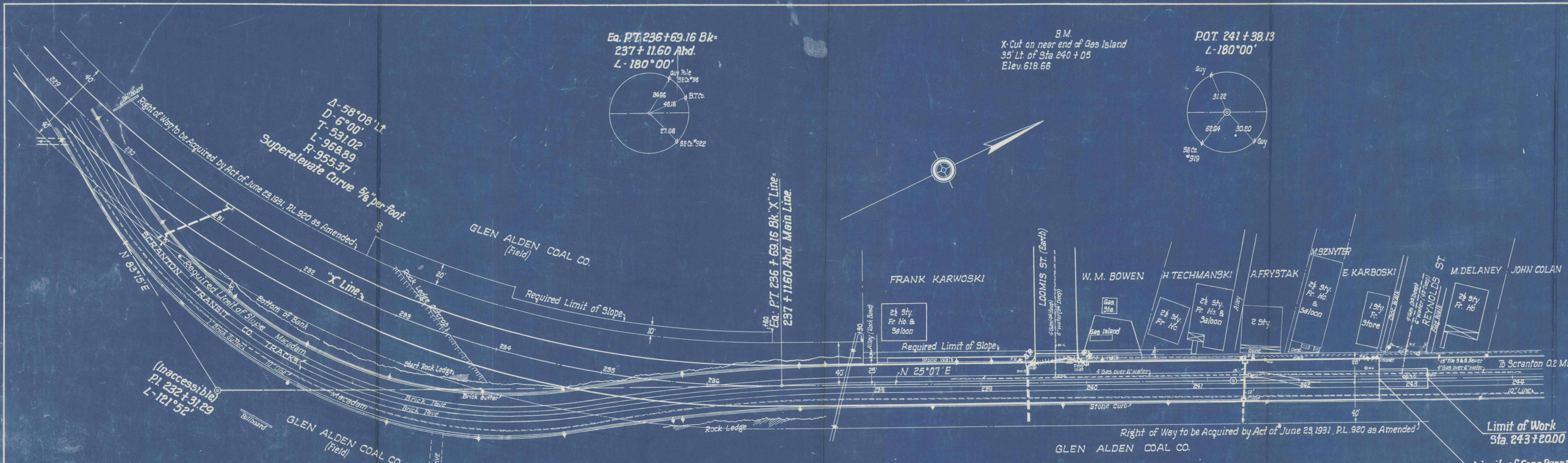


DIST.	COUNTY	ROUTE	SEC.	SHEET
4-0	Lackawanna	35085	2	7 of 7

TAYLOR BORO.

**REQUIRED LIST**

- Sta. 229+60-  
2 C.Y. Ex. Cl. II - Outlet Ditch Rt.
- Sta. 230+25 to Sta. 236+60  
1 to 1 Slope on Lt. thru cut.
- Sta. 231+00  
66'-15" R.C.P.  
1" F Inlet Lt.
- Sta. 231+75 to Sta. 234+00  
1 to 1 Slope on Rt. thru cut.
- Sta. 237+95  
4.8 C.Y. Ex. Cl. I - Grade Alley Lt.
- Sta. 239+62  
Intersection Lt. [Type A]  
40 S.Y. 8" Pl. Cam. Conc. Base Course -  
40 S.Y. 2" Bit. Surf. Course - JA-1  
5 C.Y. Fill
- Sta. 239+91  
1/2 Vert. Ft. Rebuilt M.H. Lt.  
1.5
- Sta. 239+92 to Sta. 242+75  
290 L.F. Pl. Cam. Conc. Curb Lt. Type  
JA-1
- Sta. 242+75 to Sta. 243+20  
90 S.Y. 10" Hot Stone (Type B) or  
Crushed Aggr. Base Course  
90 S.Y. 2" Bit. Surf. Course - HE-1  
10 Tons Bit. Surf. Course - HE-1 to  
adjust old pavement to meet new  
sections.
- Sta. 239+45  
40'-15" R.C.P. on Lt. - connect  
inlet to present Manhole  
1" F Inlet Lt.
- Sta. 240+00  
12'-15" R.C.P. on Lt. - connect inlet  
to present Manhole  
1" F Inlet Lt.
- Sta. 241+50 Lt.  
6'-15" R.C.P. - connect inlet to  
present Manhole Lt.  
1" F Inlet.  
2.0 V.F. Rebuilt Manhole
- Sta. 241+50  
16'-12" R.C.P. on Rt.  
1" F Inlet Rt.
- Sta. 241+50  
36'-18" R.C.P. - connect Inlets Lt. & Rt.  
34.2-15
- Adjust Gutter Line Grade between  
Sta. 241+50 and Sta. 242+00 to  
make low point in grade at Sta.  
241+50.
- Sta. 239+45 to Sta. 242+75  
9# C.Y. Ex. Cl. I - Old pave removal.  
251.4
- Sta. 229+50 to Sta. 236+00  
1000 C.Y. Fill over old pave Rt.  
min. depth 1 ft.
- Sta. 231+68 to Sta. 238+65  
Rock Below Subgrade  
432.8 C.Y. Ex. Cl. I
- Sta. 239+80  
10.2 C.Y. Ex. Cl. 2 For Pipe Which  
Was Later Moved to Sta. 239+40



Eq. P.T. 236+69.16 Bk. 237+11.60 Ahd.  
L-180°00'