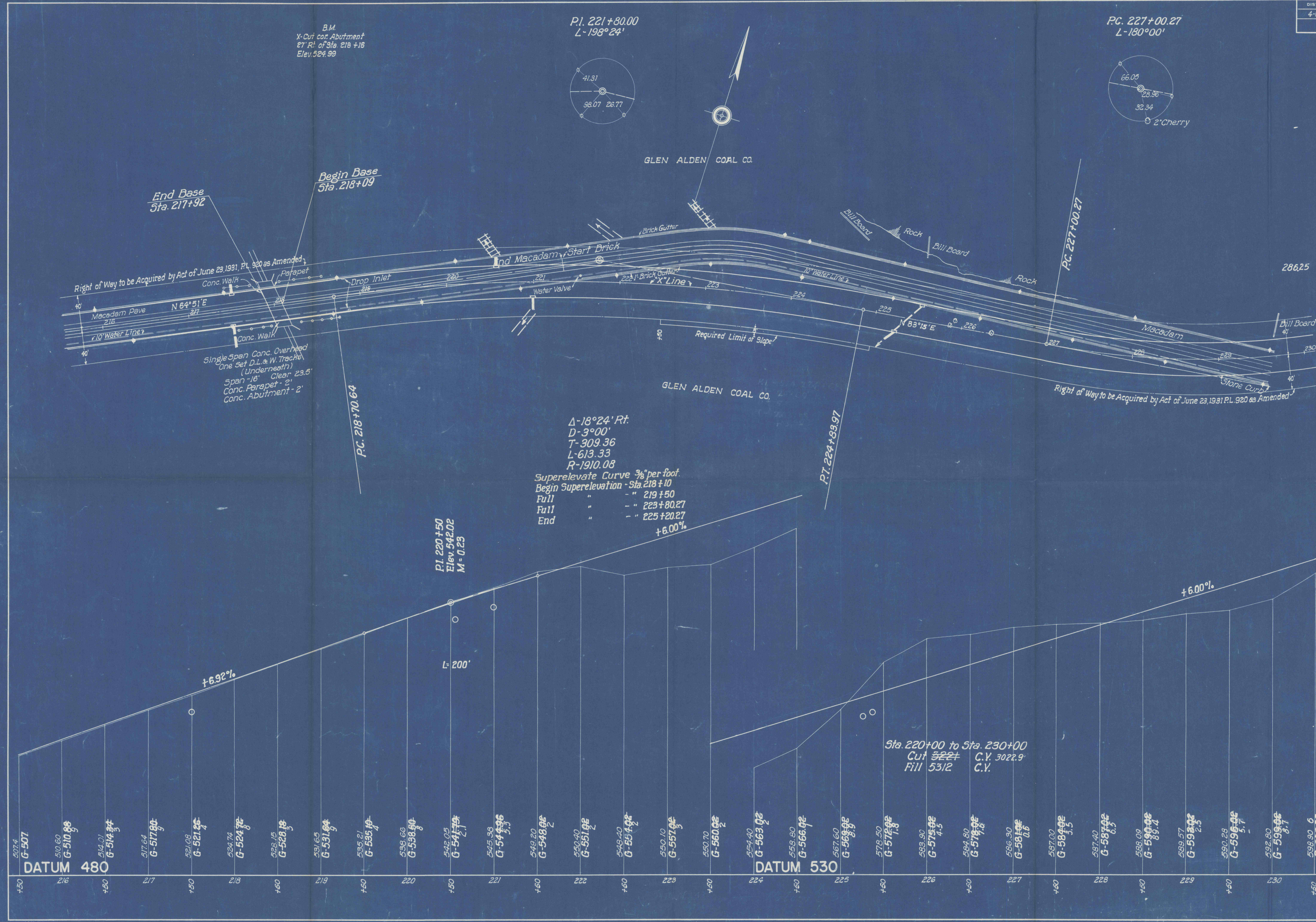


DIST.	COUNTY	ROUTE	SEC.	SHEET
4-0	Lackawanna	35053	2	6 of 7

TAYLOR BORO.

REQUIRED LIST

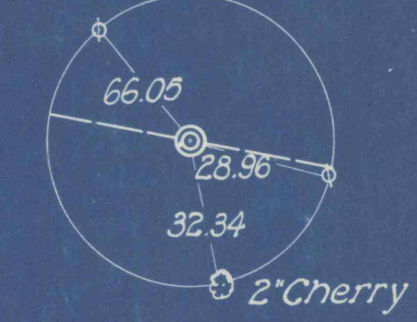
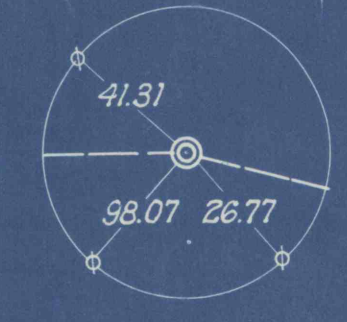
- Sta. 217+50
1-"F" Inlet Lt.
10'-15" R.C.P. Lt.
- Sta. 217+50
1-"F" Inlet Rt.
12'-15" R.C.P. Lt.
0.4 C.Y. Exc. Cl. 2 Outlet Ditch Rt.
- Sta. 218±
5 C.Y. Ex. - Cl. 1
Remove Present Surface on Bridge - Minimum 2 1/2"
- Sta. 218+04 to Sta. 229+42
2105 L.F. Pl. Cem. Conc. Curb
Type "A" Lt.
- Sta. 218+75 to Sta. 242+76
2445 L.F. Pl. Cem. Conc. Curb
Type "A" Rt.
- Sta. 220+55
1-"F" Inlet Lt.
10'-15" R.C.P. Lt.
5 C.Y. Ex. - Outlet Ditch Lt. - Cl. 2
- Sta. 221+00
1-"F" Inlet Rt.
12'-15" R.C.P. Rt.
5 C.Y. Ex. - Outlet Ditch Rt. - Cl. 2
- Sta. 225+00
7.15 C.Y. Ex. - Outlet Ditch Lt. - Cl. 2
- The fill between Sta. 221+50 and Sta. 225+00 to be placed and rolled in layers one-half the specified depth for the class of material encountered in accordance with Section 133 of the specifications dated January 1941.
- Sta. 225+25
1-"F" Inlet Rt.
20'-15" R.C.P. Rt.
3.5 C.Y. Ex. - Outlet Ditch Rt. - Cl. 2
- Sta. 225+37 [Rt. & Lt.]
44'-15" R.C.P. - Connect Inlets
- Sta. 225+50
1-"F" Inlet Lt.
- The fill between Sta. 228+00 and Sta. 231+00 to be placed and rolled in layers one-half the specified depth for the class of materials encountered in accordance with Section 133 of the specifications dated Jan. 1941.
- Sta. 218+40 to Sta. 220+75
35.929 C.Y. Ex. Old Pavement Removal Cl. 1.1
- Sta. 220+00 to Sta. 229+00
1200 C.Y. Fill - over old pave Lt. - min depth 1 ft.
- Sta. 224+25 to Sta. 227+75
1919.2 C.Y. Exc. Cl. 1
- Rock Below Subgrade
- Sta. 227+90 - Sta. 228+70
15 C.Y. Exc. Cl. 1 Old Pavement Removal.



B.M.
X-Cut cor. Abutment
27 Rt. of Sta. 218+16
Elev. 524.99

P.I. 221+80.00
L-198°24'

P.C. 227+00.27
L-180°00'



GLEN ALDEN COAL CO.

GLEN ALDEN COAL CO.

P.I. 220+50
Elev. 542.02
M = 0.23

Δ-18°24' Rt.
D-3°00'
T-309.36
L-613.33
R-1910.08
Superelevate Curve 3/8% per foot
Begin Superelevation - Sta. 218+10
Full " " " 219+50
Full " " " 223+80.27
End " " " 225+20.27
+6.00%

Sta. 220+00 to Sta. 230+00
Cut 522.1 C.Y. 3022.9
Fill 531.2 C.Y.

DATUM 480

DATUM 530