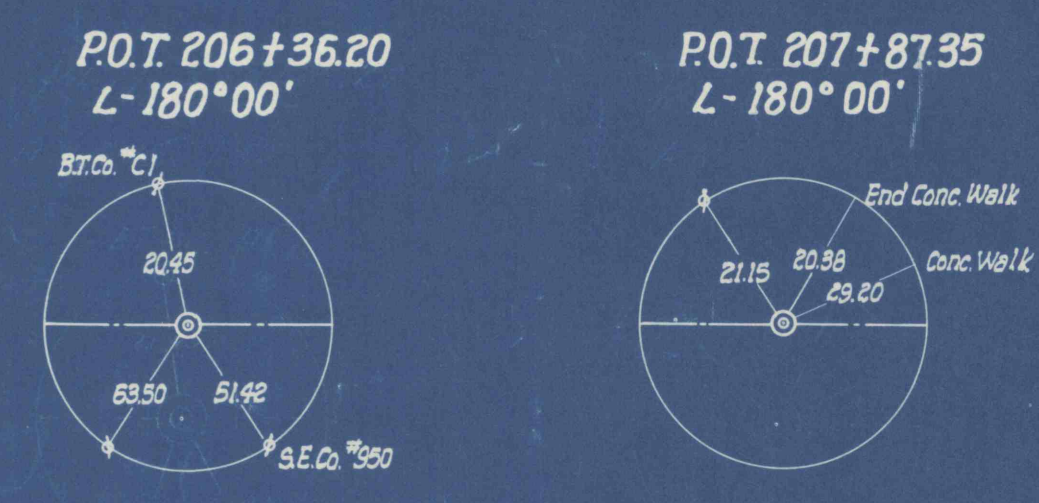
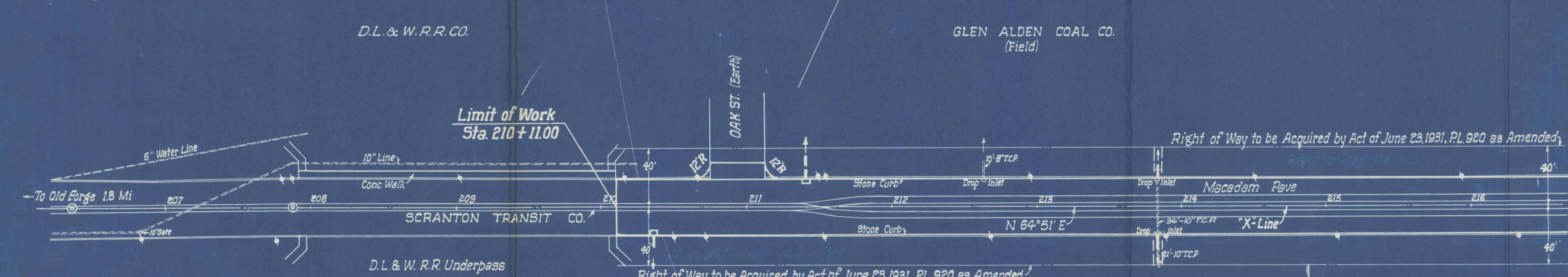


**REQUIRED LIST**

- Sta. 210+11 to Sta. 210+75 Lt. 78 L.F. Plain Cem. Conc. Curb-Type "A" 68.05
  - Sta. 210+11 to Sta. 211+98 Rt. 78 L.F. Plain Cem. Conc. Curb-Type "A" 3270.9
  - Sta. 210+95 8'-15" R.C.P. Rt. 1-"F" Inlet Rt.
  - Sta. 210+95 Intersection Lt. [Type "A"] 57.668 S.Y. 8" Pl. Cem. Conc. Base Course- 57.668 S.Y. 2 1/2" Bit. Surf. Course- JA-1 20 C.Y. Ex. C.I.I
  - Sta. 211+12 to Sta. 211+64 Lt. 52 L.F. Pl. Cem. Conc. Curb-Type "A" 2786.70
  - Sta. 211+40 16'-15" R.C.P. Lt. 1-Type "F" Inlet Box Using existing castings (Lt.)
  - Sta. 212+65 Lt. 3.42 C.Y. Ex. C.I. II- Pipe & Inlet Removal
  - Sta. 213+84 10'-15" R.C.P. Lt. 10'-15" R.C.P. Rt. 1-V.F. Rebuild Inlet Lt. 1-V.F. Rebuild Inlet Rt. Type "F" Inlet Rt. 5.08 C.Y. Ex. C.I. II- Pipe Removal 12.58 C.Y. Ex. C.I. II- Outlet Ditch Lt. 5.25 C.Y. Ex. C.I. II- Outlet Ditch Rt.
  - Sta. 210+75 to Sta. 212+50 34.437 C.Y. Ex. Old Pave Removal 18+08 [C.I. I]
  - Sta. 213+60 to Sta. 217+98 120 C.Y. Ex. Old Pave Removal 102.4 [C.I. I]
- GUARD FENCE TYPE I-C**
- | Station to Station | Length      | End Anch. | Type - C. |
|--------------------|-------------|-----------|-----------|
| 183+50 - 185+26    | 176         | 2         |           |
| 187+00 - 189+72    | 272         | 2         |           |
| 210+11 - 213+63    | 352         | 2         |           |
| 216+72 - 218+00    | 128         | 1         |           |
| 218+17 - 219+29    | 112         | 1         |           |
| 221+60 - 225+12    | 352         | 2         |           |
| 227+70 - 233+46    | 576         | 2         |           |
| <b>Total</b>       | <b>2608</b> | <b>18</b> |           |
- On Lt.
- | Station to Station | Length | End Anch. |
|--------------------|--------|-----------|
| 187+00 - 190+20    | 320    | 2         |
| 211+50 - 212+78    | 128    | 2         |
| 216+57 - 217+85    | 128    | 1         |
| 218+02 - 218+66    | 64     | 1         |
- 252 L.F. Subgrade drains as directed by the Engineer.
- 7 42 Tons - Mineral Aggregate Coated with Asphalt Cement as per special requirement in the Proposal.



B.M.  
X Cut on cor. curb  
18' Lt. of Sta. 210+12  
Elev. 504.52



Station To Station	Length	End Anch.	Type - C.
183+40 - 185+02	160	2	
187+01 - 189+59	256	2	
210+11 - 212+03	192	1	
217+40 - 217+88	48	2	
218+33 - 219+45	112	2	
222+15 - 225+05	288	2	
228+16 - 230+10	192	2	
231+76 - 233+16	144	2	
<b>Total</b>	<b>2216</b>	<b>29</b>	

