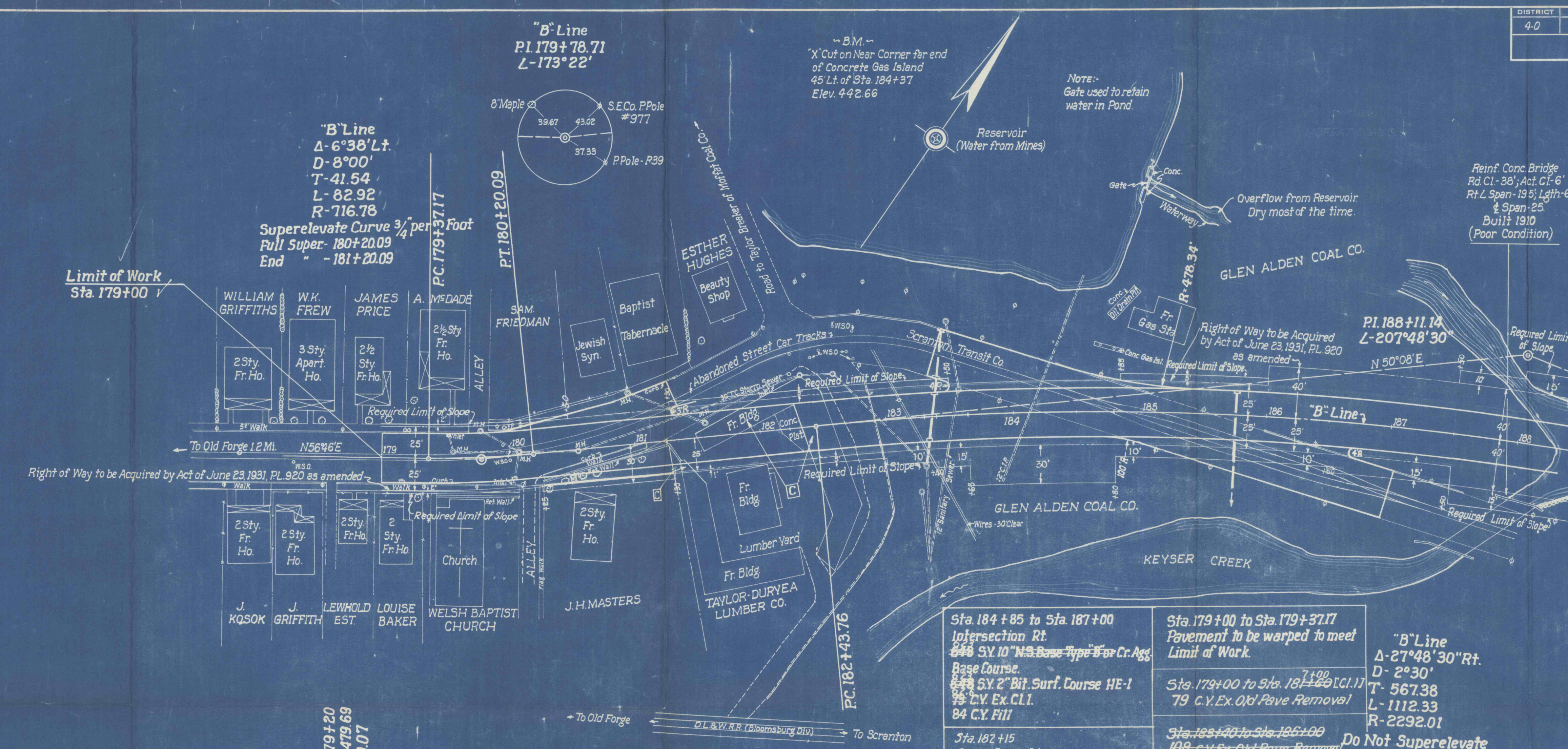
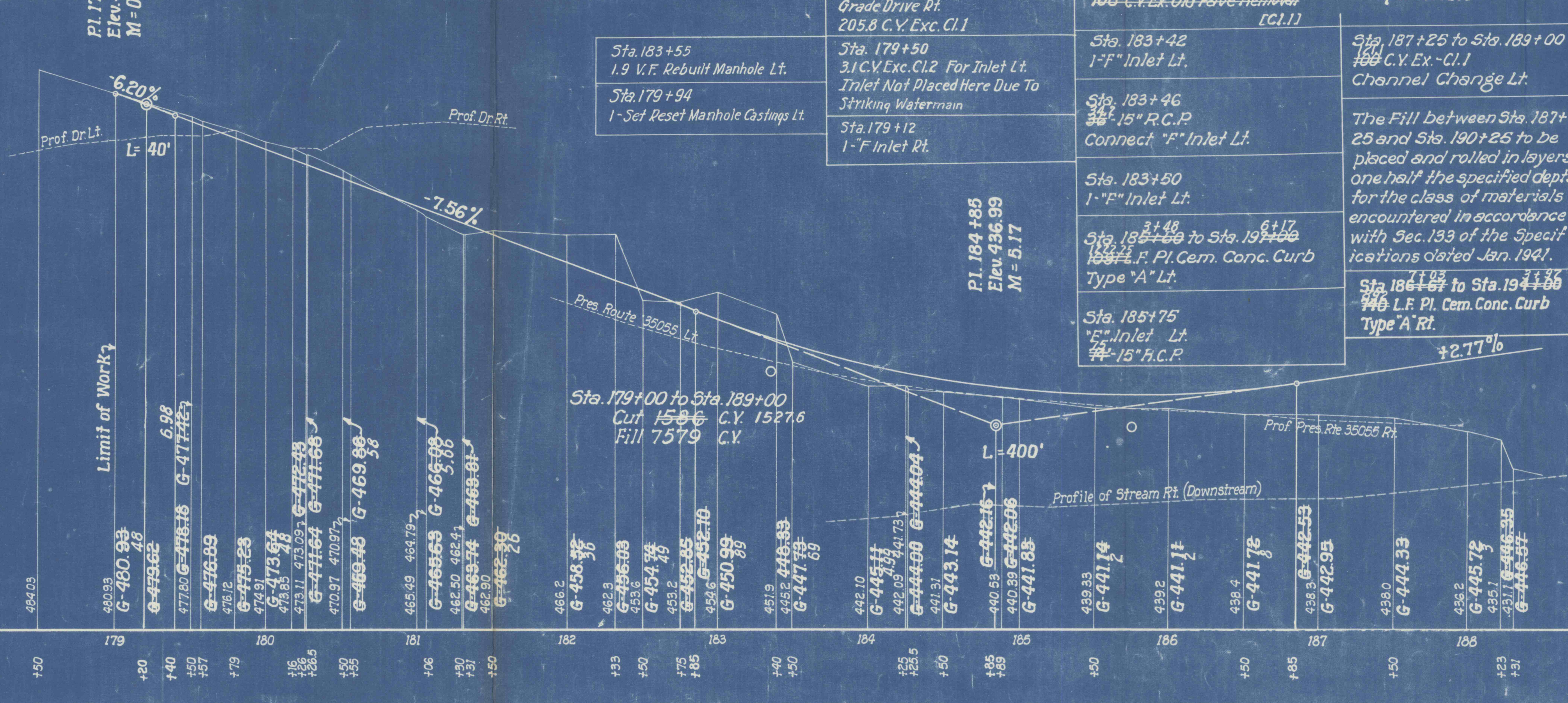


REQUIRED LIST

- Sta. 179+52
1- "F" Inlet Lt.
- Sta. 179+57
1-Set-Reset Manhole Castings (L.T.)
1.0 V.F. Rebuilt Manhole
- Sta. 179+78
1- V.F. Rebuilt Manhole Lt.
1-Set-Reset Manhole Castings (Poor Condition)
- Sta. 179+79
Grade Drive Lt.
5 C.Y. Ex. - C.I. 1
- Sta. 179+80 to Sta. 181+00
200 L.F. Pl. Cem. Conc. Curb
Type "A" Lt.
- Sta. 179+00 to Sta. 184+00
500 L.F. Pl. Cem. Conc. Curb
Type "A" Rt.
- Sta. 180+00 to Sta. 181+31
Intersection Lt. [Base Course]
400 L.F. 10" N.S. Base Type "B" of Cr. Agg.
180 L.F. 2" Bit. Surf. Course - HE-1
36 C.Y. Ex. - C.I. 1
- Sta. 180+05
1- "F" Inlet Rt.
- Sta. 180+09
1- V.F. Rebuilt Manhole Lt.
1.0
- Sta. 180+16
Grade Alley Rt.
5 C.Y. Fill
1.0 C.V. Exc. C.I. 1
- Sta. 180+25 to Sta. 181+00
300 L.F. Pl. Cem. Conc. Curb
Type "A" Lt.
- Sta. 180+55
1- V.F. Rebuilt Manhole Lt.
- Sta. 181+35 to Sta. 183+00
230 L.F. Pl. Cem. Conc. Curb
Type "A" Lt.
- Sta. 181+53
1- V.F. Rebuilt Manhole Lt.
1.55
- Sta. 182+80
Grade Road Approach Rt.
10 C.Y. Ex. - C.I. 1
15.8
- Sta. 183+35
1- "F" Inlet Rt. [Rt.]
15" R.C.P. Connect to Present M.H.
4.4 C.Y. Exc. C.I. 2 Outlet Ditch Rt.
- Sta. 183+36
15" R.C.P. - connect Inlets Rt. & Lt.
4.2 C.Y. Exc. C.I. 2 Extra Depth Pipe
- Sta. 183+40
1- "F" Inlet Lt.
15" R.C.P. Connect "F" Inlet Lt.
- Sta. 183+40 to Sta. 185+50
Intersection Lt. [Base Course]
400 L.F. 10" N.S. Base Type "B" of Cr. Agg.
200 L.F. 2" Bit. Surf. Course - HE-1
36 C.Y. Ex. - C.I. 1
25 C.Y. Fill



Sta. 184+85 to Sta. 187+00 Intersection Rt. 645 S.Y. 10" N.S. Base Type "B" of Cr. Agg. Base Course. 645 S.Y. 2" Bit. Surf. Course HE-1 84 C.Y. Ex. C.I. 1 84 C.Y. Fill	Sta. 179+00 to Sta. 179+37.17 Pavement to be warped to meet Limit of Work. Sta. 179+00 to Sta. 181+00 [C.I. 1] 79 C.Y. Ex. Old Pav. Removal	"B" Line Δ-27°48'30" Rt. D-2°30' T-567.38 L-1112.33 R-2292.01
Sta. 182+15 Grade Drive Rt. 205.8 C.Y. Exc. C.I. 1	Sta. 183+42 1- "F" Inlet Lt.	Sta. 187+25 to Sta. 189+00 100 C.Y. Ex. - C.I. 1 Channel Change Lt.
Sta. 183+55 1.9 V.F. Rebuilt Manhole Lt.	Sta. 183+46 15" R.C.P. Connect "F" Inlet Lt.	The Fill between Sta. 187+25 and Sta. 190+25 to be placed and rolled in layers one-half the specified depth for the class of materials encountered in accordance with Sec. 133 of the Specifications dated Jan. 1941.
Sta. 179+94 1-Set-Reset Manhole Castings Lt.	Sta. 183+50 1- "F" Inlet Lt.	Sta. 186+07 to Sta. 191+00 440 L.F. Pl. Cem. Conc. Curb Type "A" Rt.
Sta. 179+12 1- "F" Inlet Rt.	Sta. 185+175 "F" Inlet Lt. 15" R.C.P.	Sta. 186+07 to Sta. 191+00 440 L.F. Pl. Cem. Conc. Curb Type "A" Rt.



DATUM - 410'