

DIST.	COUNTY	ROUTE	SEC.	SHEET
4-0	Lackawanna	33033	2	2 of 7
Taylor Borough				

GENERAL NOTES

Original Legal Width of Right of Way is forty-nine and one-half (49½) feet. Obtained from Luzerne County Court Records in Luzerne County Court House, Wilkes-Barre, Pa. Road Docket N^o 1, Pages 89, 90, & 91. Confirmed June Sessions 1791.

Buildings and Structures indicated with a are to be removed or adjusted by the County or other responsible authority, and such work is not a part of this contract.

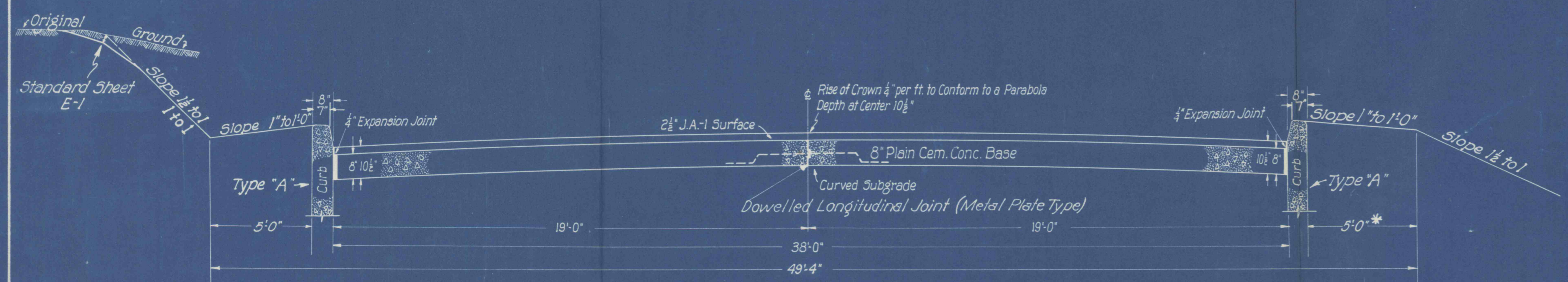
Curbing is to be depressed as directed by the Engineer.

Construction details, other than shown on these drawings, shall conform to the attached sheets:

- E-1, January 23, 1941
- SD-3, January 2, 1941
- B-1, September 19, 1938
- Std. Inlets, August 14, 1940
- G-F-C, July 1, 1940
- G-F-S-P, November 1, 1940

See special requirements in the Proposal for Maintenance of Traffic.

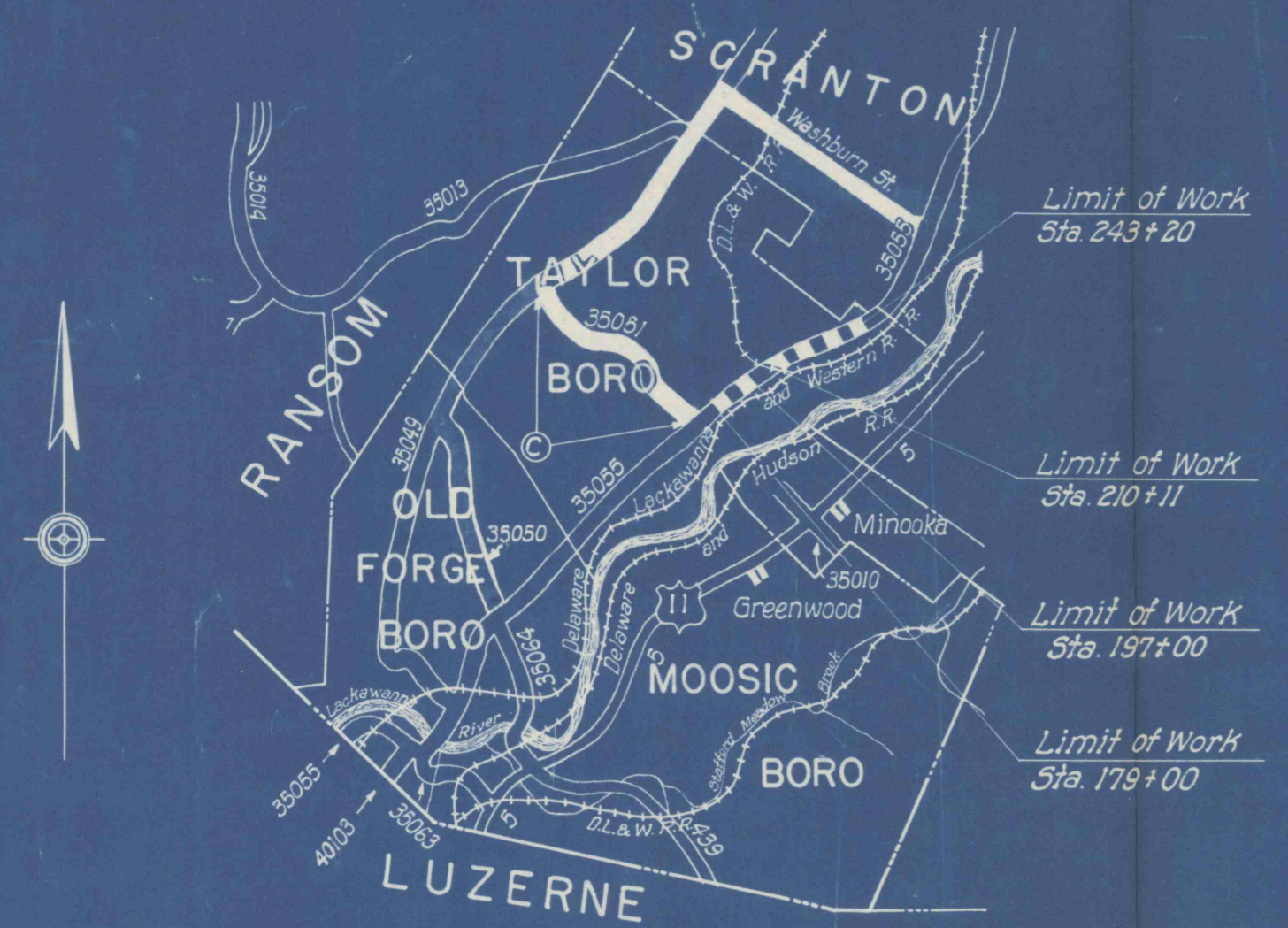
Either Crushed Stone, Slag or Washed and Crushed Gravel shall be used as a Coarse Aggregate in the 8" Plain Cement Concrete Base Course (Type "A") and in the Plain Cement Concrete Curbing (Type "A").
Crushed Stone shall be used as a Coarse Aggregate in the Bituminous Surface Course, JE-1.



8" PLAIN CEMENT CONCRETE BASE COURSE (TYPE A)
2 1/2" BITUMINOUS SURFACE COURSE JA-1

* 9'-4" Shoulders Lt. & Rt.
Sta. 183+ to Sta. 190+

The Gross Weight of Trucks for delivering material to this project is restricted in accordance with Section 65 of the Specifications dated January 1941 for hauling over all Routes indicated by "C".



OVERALL LENGTH OF THIS PROJECT=6318.66 FEET

GRADING SECTION

THE FOLLOWING INFORMATION ON THE ESTIMATED AMOUNTS OF GRADING QUANTITIES HAS BEEN USED BY THE DEPARTMENT OF HIGHWAYS IN ITS PRELIMINARY ESTIMATE FOR THIS PROJECT AND SHALL NOT BE TAKEN OR USED AS A WAIVER OF THE PROVISIONS OF THE SPECIFICATIONS.

STATIONS	LENGTH	CUT	WASTE	NET CUT	CUT + % OF SWELL	CUT - % OF SHRINK	FILL	EXCESS CUT	EXCESS FILL	BORROW	CLASS 1 EXCAV.	CLASS 2 EXCAV.
179+00 to 243+20	6318.66'	26,605	700	25,905	—	23,851	21,193	2,658			25,993	612

CONSTRUCTION EQUALITIES

Sta. 236+69.16 Bk. - Sta. 237+11.60 Ahd.
Sta. 194+95.76 Bk. - Sta. 195+54.66 Ahd.

PUBLIC UTILITIES

- Scranton Electric Co.
Scranton, Pa.
- Bell Telephone Co. of Penna.
Scranton, Pa.
- Scranton Spring Brook Water Service Co.
Wilkes-Barre, Pa.
- Scranton Transit Co.
Scranton, Pa.

= DETOUR MAP =

LEGEND

