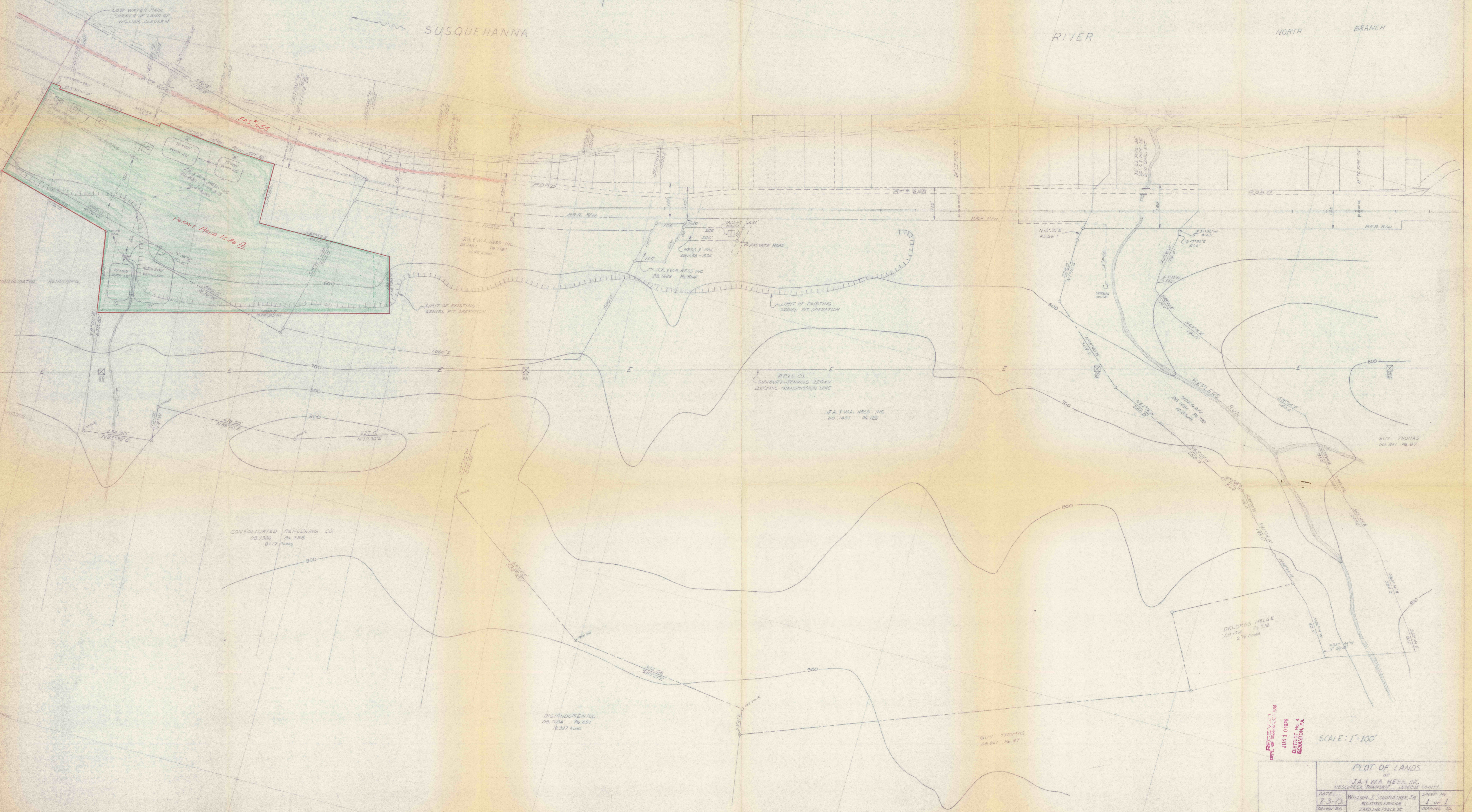


SUSQUEHANNA

RIVER NORTH BRANCH



RECEIVED
 JUN 1 0 1973
 DISTRICT No. 4
 SCRANTON, PA.

SCALE: 1"=100'

PLOT OF LANDS		
J.A. WEA HESS, INC. WESCAMPTON TOWNSHIP, LEHIGH COUNTY		
DATE: 7-3-73	BY: WILLIAM J. SCHUMACHER, JR. REGISTERED SURVEYOR	SHEET No. 1 of 1
DRAWN BY: TMO	23RD AND PRICE ST. MACLETON, PENNSYLVANIA 18431	ADJOINING No. 73-120