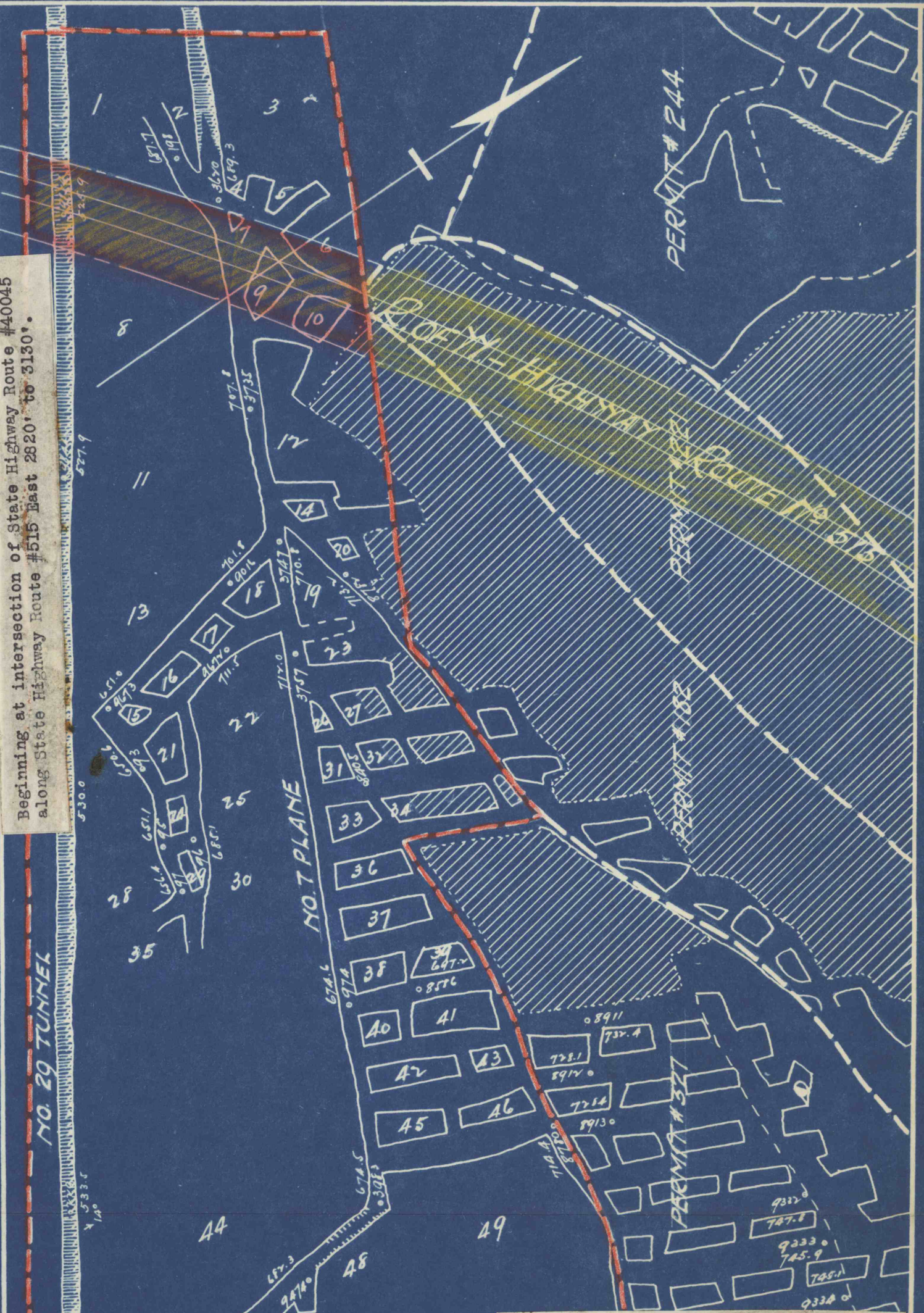


Beginning at intersection of State Highway Route #40045
 along State Highway Route #515 East 2820' to 3130'.



THE HUDSON COAL COMPANY
 DELAWARE COLLIERY Rt 515
 ROSS BED
 P. J. O'Hara Colliery Supt.
 W. W. Wirth Div. Engineer.
 Wilkes-Barre, Pa.
 H. H. Otto Cadwallader Evans, Jr.
 Mining Engr. Vice-Pres. & Gen. Mgr.
 424 Wyoming Ave., Scranton, Pa.
 Date 11/7/40. Scale 1" - 100'