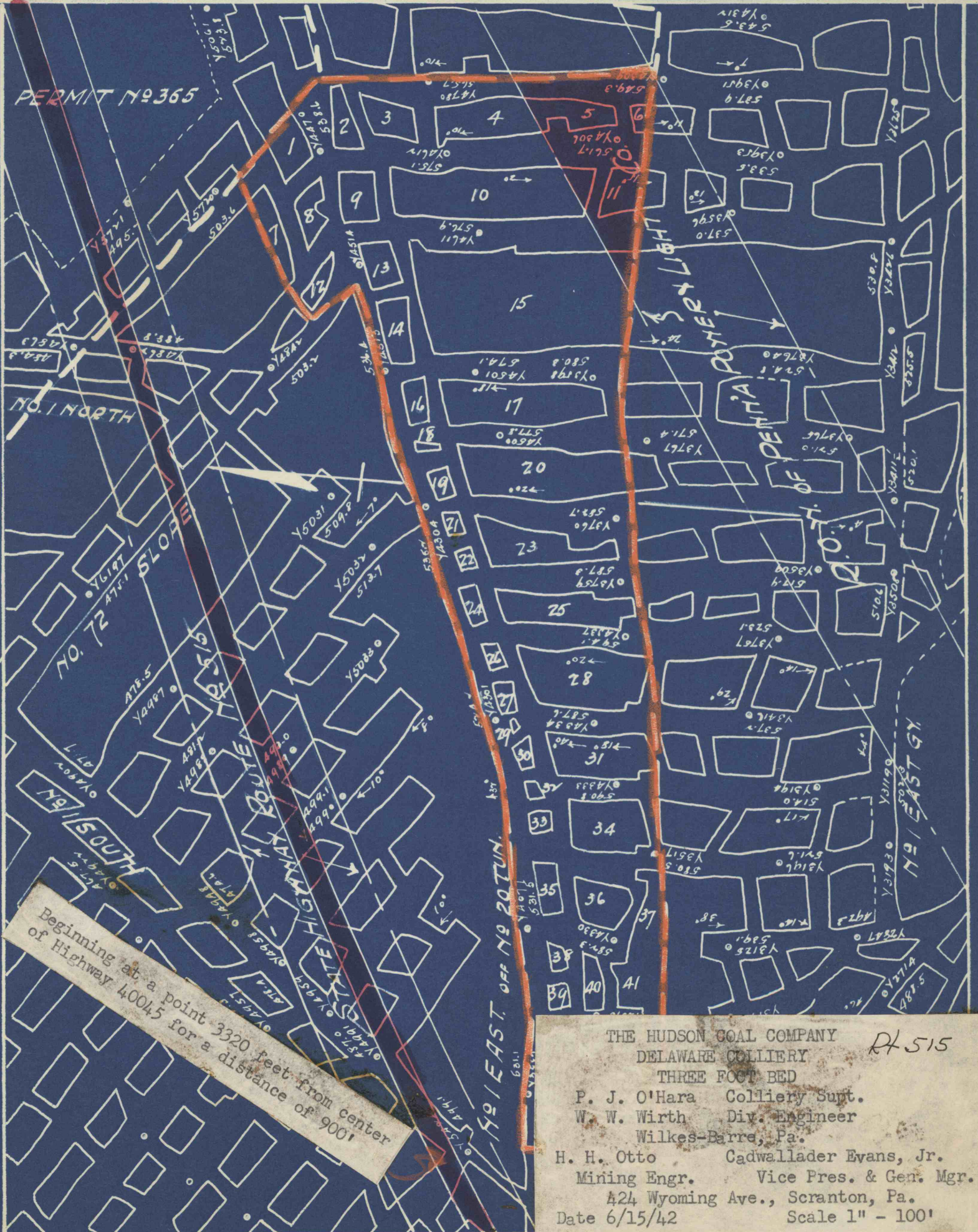


PERMIT 179365



Beginning at a point 3320 feet from center
of Highway 40045 for a distance of 900'

THE HUDSON COAL COMPANY
 DELAWARE COLLIERY
 THREE FOOT BED
 P. J. O'Hara Colliery Supt.
 W. W. Wirth Div. Engineer
 Wilkes-Barre, Pa.
 H. H. Otto Cadwallader Evans, Jr.
 Mining Engr. Vice Pres. & Gen. Mgr.
 424 Wyoming Ave., Scranton, Pa.
 Date 6/15/42 Scale 1" - 100'

R 515