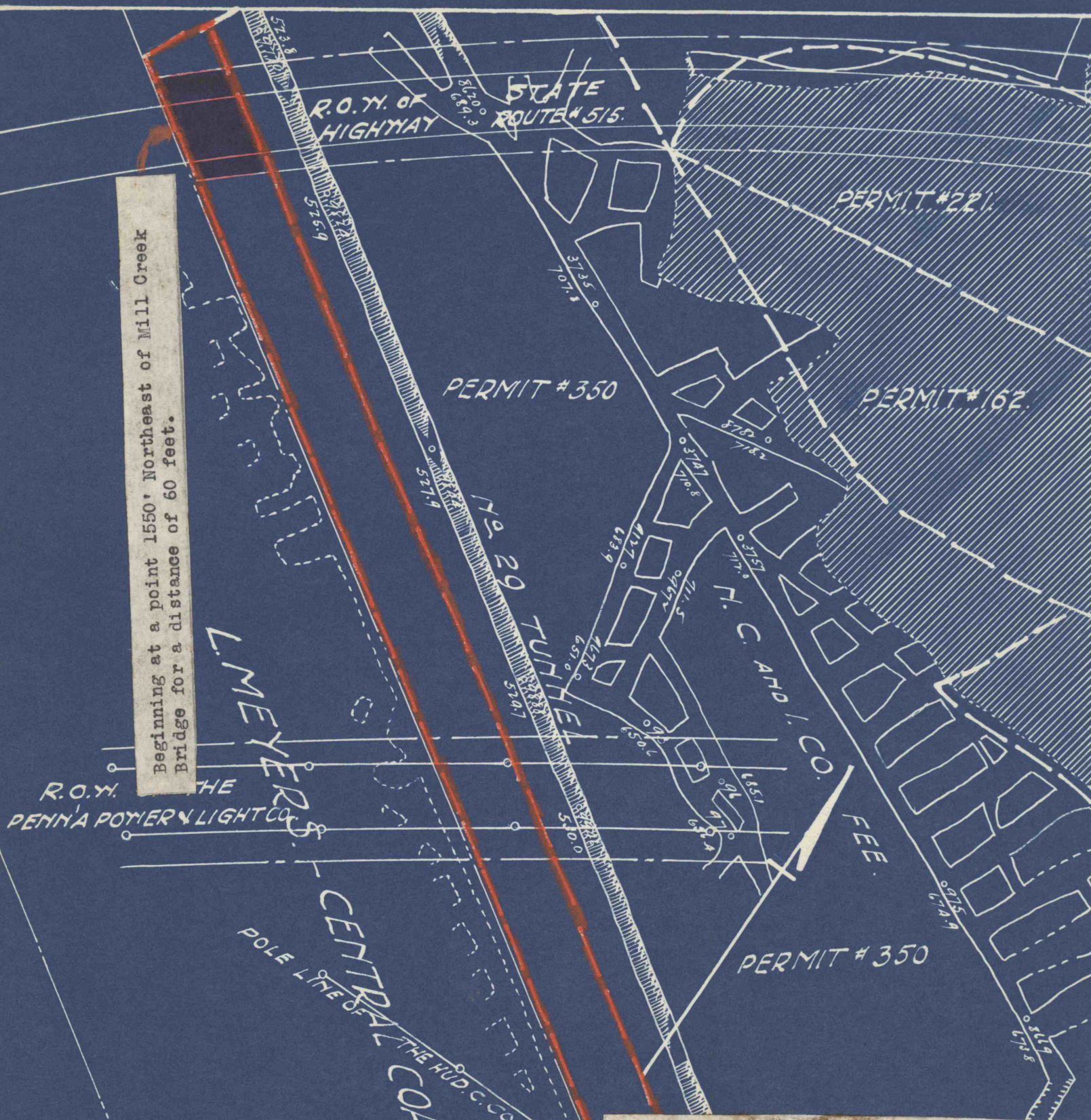


Beginning at a point 1550', Northeast of Mill Creek
Bridge for a distance of 60 feet.



THE HUDSON COAL COMPANY
DELAWARE COLLIERY
ROSS BED
P. J. O'Hara Colliery Supt.
W. W. Wirth Div. Engineer
Wilkes-Barre, Pa.
H. H. Otto Mining Engr. Cadwallader Evans Jr. Vice Pres. & Gen. Mgr.
424 Wyoming Ave., Scranton, Pa.
Date 1/12/42 Scale 1" - 100'