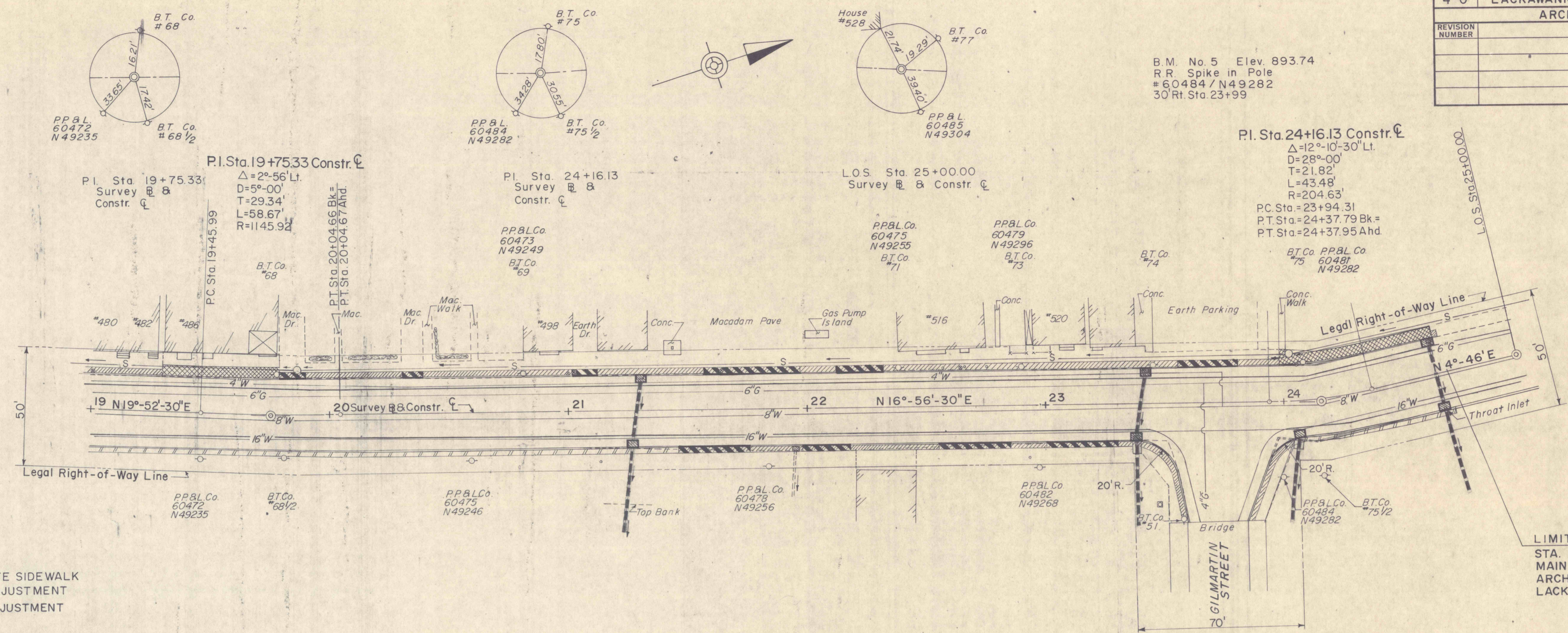


DISTRICT	COUNTY	ROUTE	SECTION	SHEET
4-0	LACKAWANNA	MAIN ST.		27 of 28
ARCHBALD BOROUGH				
REVISION NUMBER	REVISIONS	DATE	BY	

B.M. No. 5 Elev. 893.74  
 R.R. Spike in Pole  
 # 60484 / N49282  
 30' Rt. Sta 23+99



PI. Sta. 24+16.13 Constr. C  
 $\Delta = 12^\circ - 10' - 30''$  Lt.  
 $D = 28^\circ - 00'$   
 $T = 21.82'$   
 $L = 43.48'$   
 $R = 204.63'$   
 PC Sta. = 23+94.31  
 PT Sta. = 24+37.79 Bk. =  
 PT Sta. = 24+37.95 Ahd.

**LEGEND**

- WATER SHUT OFF
- ⊗ GAS SHUT OFF
- MANHOLE
- ⊕ UTILITY POLE
- FIRE HYDRANT
- DEPRESSED CURB
- ▨ REINFORCED CONCRETE SIDEWALK
- ▧ BITUMINOUS WALK ADJUSTMENT
- ▩ BITUMINOUS DRIVE ADJUSTMENT
- STORM LINE
- ▨ CEMENT CONCRETE SIDEWALK
- ▧ SEEDING & MULCHING

LIMIT OF WORK  
 STA. 24+70.00  
 MAIN ST.  
 ARCHBALD BORO.  
 LACKAWANNA CO.