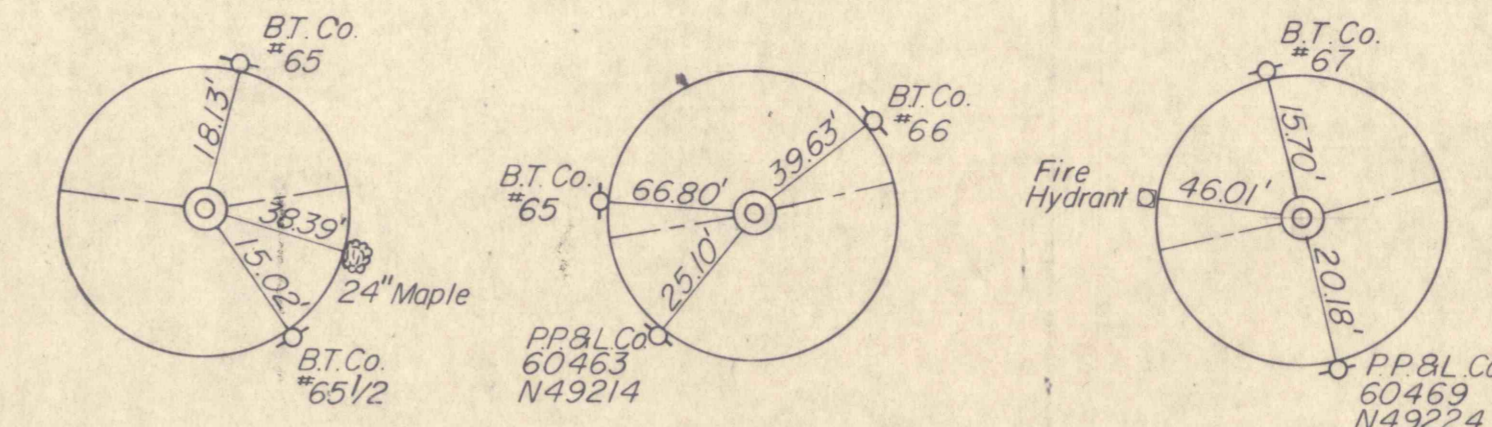
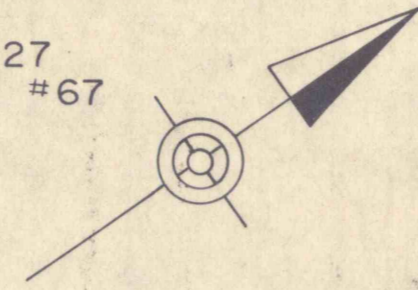


DISTRICT	COUNTY	ROUTE	SECTION	SHEET
4-0	LACKAWANNA	MAIN ST.		25 of 28
ARCHBALD BOROUGH				
REVISION NUMBER	REVISIONS	DATE	BY	

B.M. No. 3 Elev. 889.00
 R.R. Spike in Pole
 #60443/N49186
 15' Lt. Sta. 13+66

B.M. No. 4 Elev. 890.27
 R.R. Spike in B.T. Co. #67
 15' Lt. Sta. 18+50



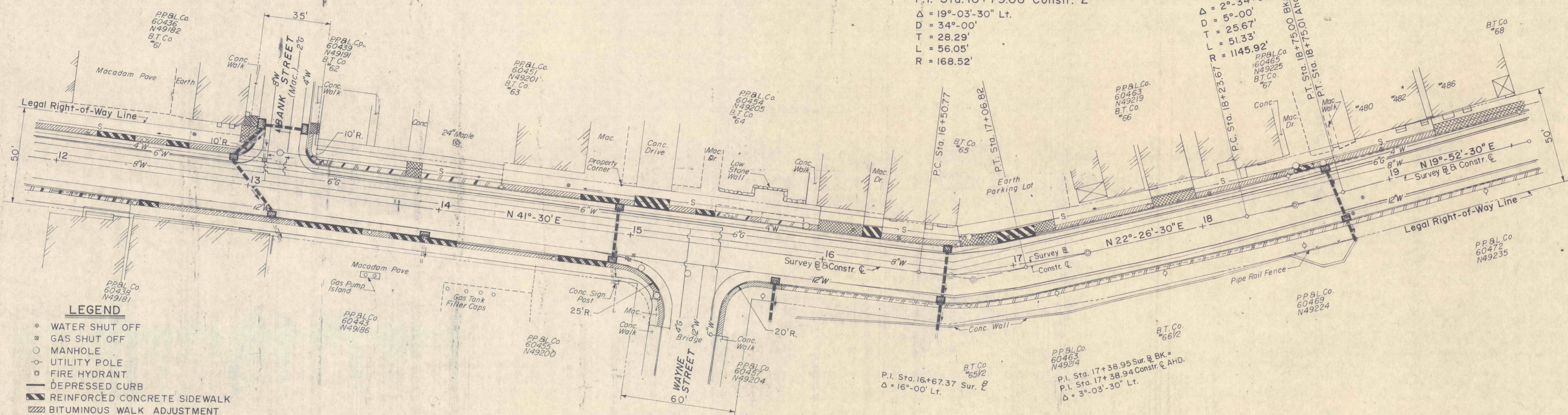
P.I. STA. 16+67.37
 Survey \mathbb{E}

P.I. STA. 17+38.94
 Survey \mathbb{E} & \mathbb{B}
 Constr. \mathbb{C}

P.I. STA. 18+49.34
 Survey \mathbb{E} & \mathbb{B}
 Constr. \mathbb{C}

P.I. Sta. 16+79.06 Constr. \mathbb{C}
 $\Delta = 19^\circ-03'-30''$ Lt.
 $D = 34'-00''$
 $T = 28.29'$
 $L = 56.05'$
 $R = 168.52'$

P.I. Sta. 18+49.34 Constr. \mathbb{C}
 $\Delta = 2^\circ-34'-00''$ Lt.
 $D = 5'-00''$
 $T = 25.67'$
 $L = 51.33'$
 $R = 1145.92'$



LEGEND

- ⊙ WATER SHUT OFF
- ⊙ GAS SHUT OFF
- MANHOLE
- UTILITY POLE
- ⊠ FIRE HYDRANT
- DEPRESSED CURB
- ▨ REINFORCED CONCRETE SIDEWALK
- ▨ BITUMINOUS WALK ADJUSTMENT
- ▨ BITUMINOUS DRIVE ADJUSTMENT
- STORM LINE
- ▨ CEMENT CONCRETE SIDEWALK
- ▨ SEEDING & MULCHING
- ▨ SODDING