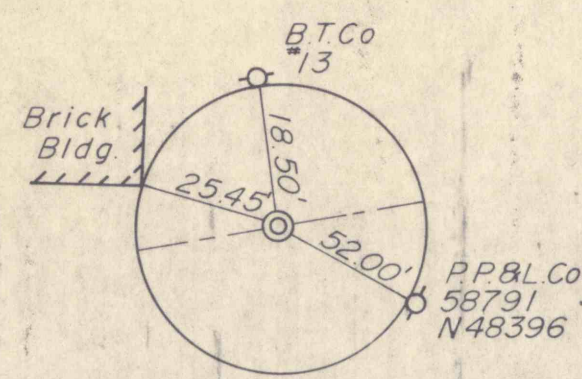
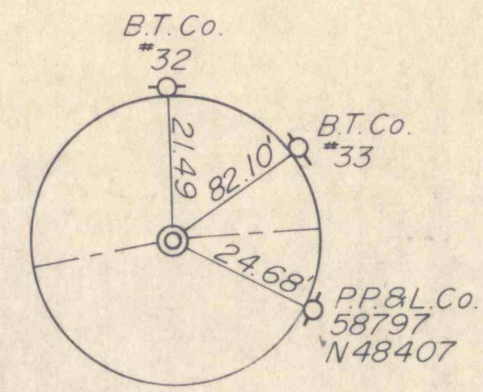


DISTRICT	COUNTY	ROUTE	SECTION	SHEET
4-0	LACKAWANNA	MAIN ST.		13 of 28
BLAKELY BOROUGH				
REVISION NUMBER	REVISIONS	DATE	BY	



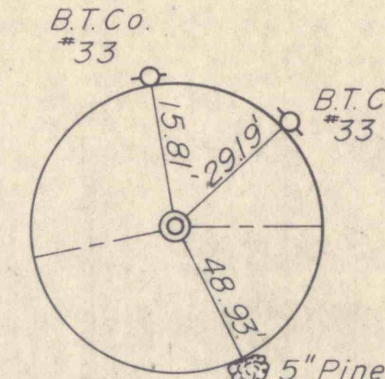
L.O.S. STA. 10+00.00 SUR. & CONSTR. \angle

B.M. No. 1 Elev. 795.26
R.R. Spike in Pole
P.P. & L. Co. 58791/N48396
16' Right Sta. 10+50



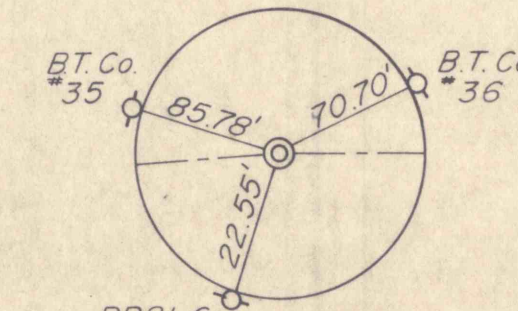
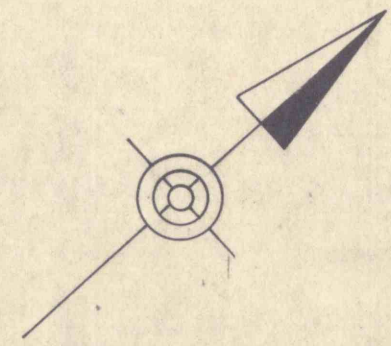
P.I. STA. 11+48.72 SUR. \angle

P.I. STA. 11+48.72 SUR. \angle
 $\Delta = 4^{\circ}-49'$ RT.
NO CURVE



P.I. STA. 12+30.64 SUR. \angle

P.I. STA. 12+30.64 SUR. \angle
 $\Delta = 3^{\circ}-49'$ RT.
NO CURVE



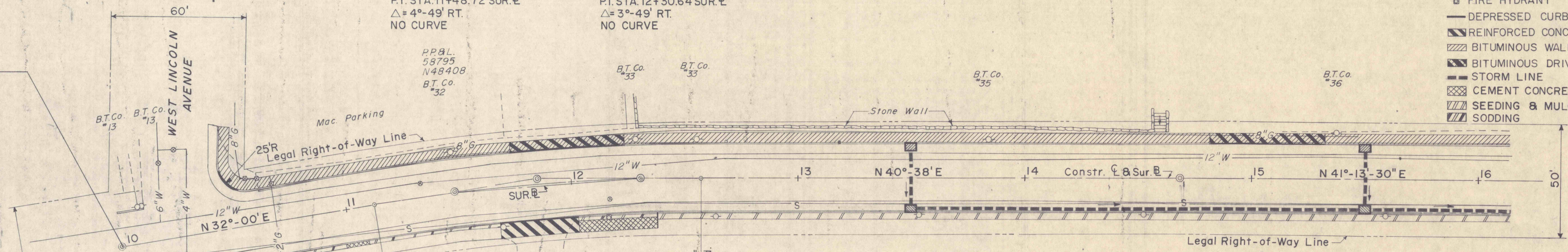
P.I. STA. 14+68.68 SUR. & CONSTR. \angle

B.M. No. 2 Elev. 791.38
R.R. Spike in Pole
B.T. Co. #36
20' Left Sta. 15+37

LEGEND

- WATER SHUT OFF
- GAS SHUT OFF
- MANHOLE
- UTILITY POLE
- FIRE HYDRANT
- DEPRESSED CURB
- ▨ REINFORCED CONCRETE SIDEWALK
- ▨ BITUMINOUS WALK ADJUSTMENT
- ▨ BITUMINOUS DRIVE ADJUSTMENT
- STORM LINE
- ▨ CEMENT CONCRETE SIDEWALK
- ▨ SEEDING & MULCHING
- ▨ SODDING

LIMIT OF WORK
STA. 10+00.00
MAIN ST.
BLAKELY BORO.
LACKAWANNA CO.



P.I. STA. 11+85.05 Constr. \angle

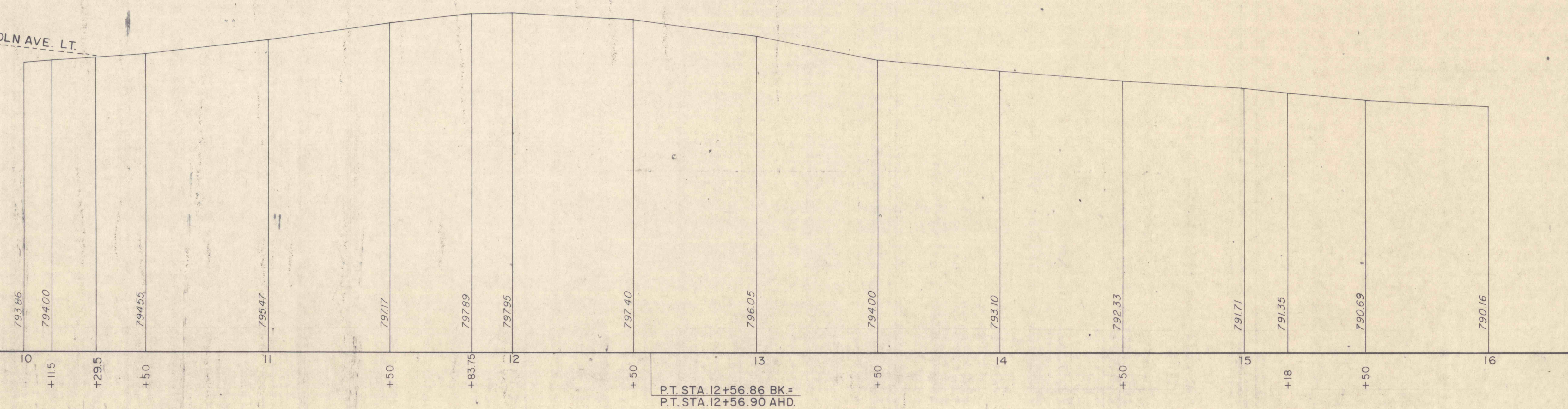
$\Delta = 8^{\circ}-38'$ Rt.
D = 6°-00'
T = 72.08'
L = 143.89'
R = 954.93'

P.I. STA. 14+68.68 Constr. \angle

$\Delta = 0^{\circ}-35'-30''$ Rt.
No Curve

W. LINCOLN AVE. LT.

DATUM 770



P.T. STA. 12+56.86 BK.=
P.T. STA. 12+56.90 AHD.