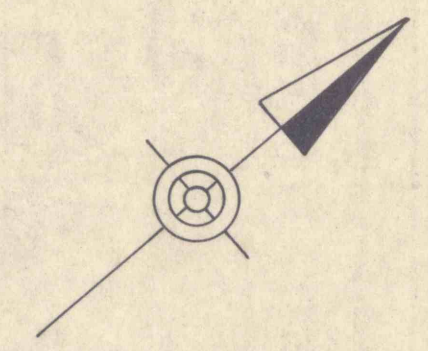
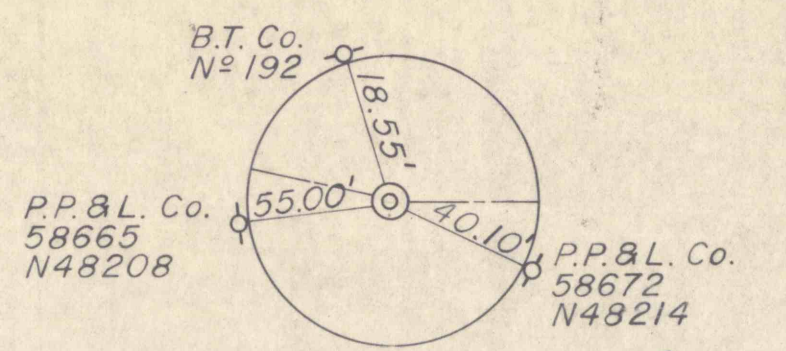
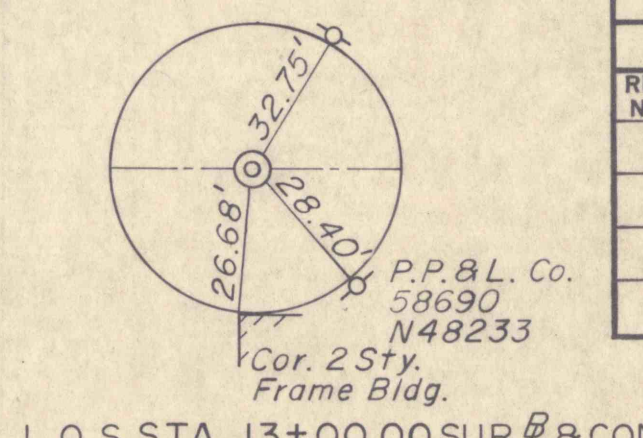


DISTRICT	COUNTY	ROUTE	SECTION	SHEET
4-0	LACKAWANNA	MAIN ST.		11 of 28
DICKSON CITY BOROUGH				
REVISION NUMBER	REVISIONS	DATE	BY	

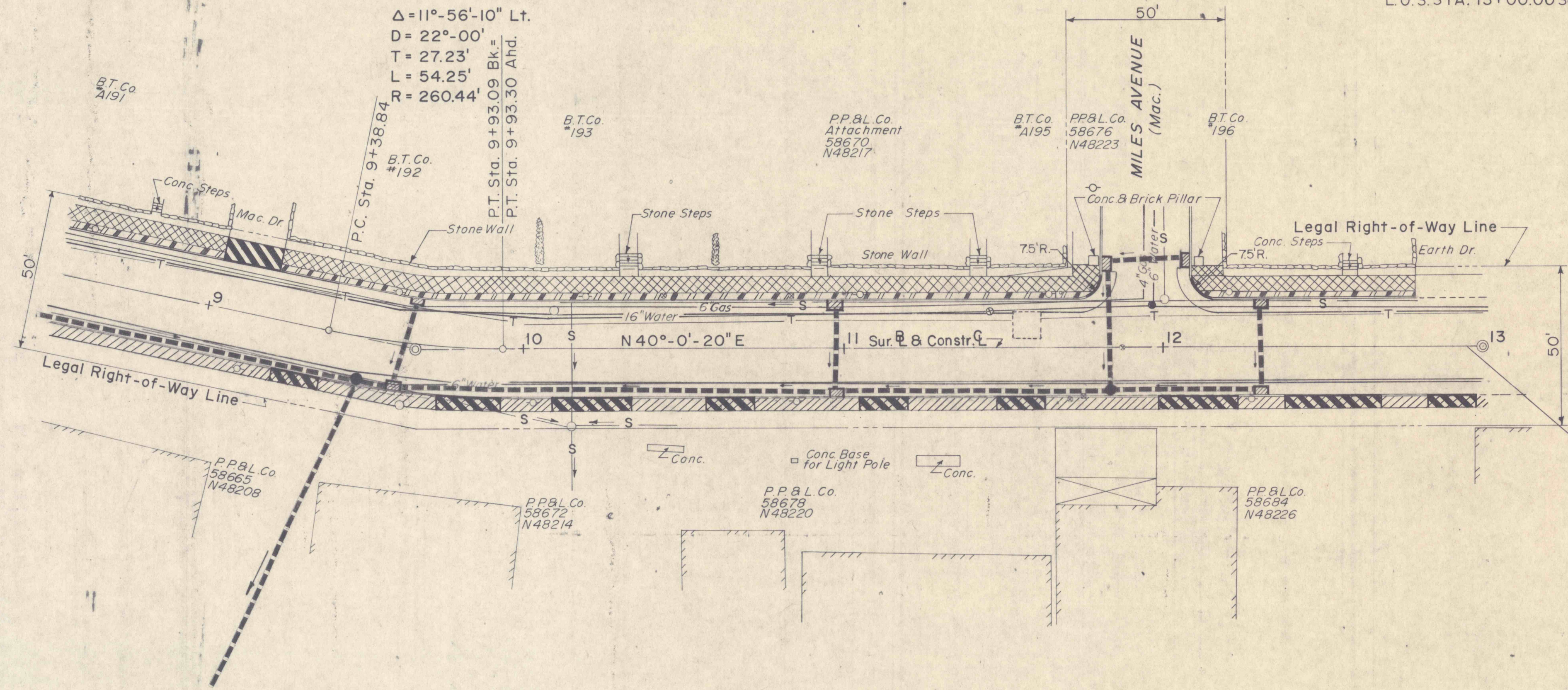


B.M. No. 2 Elev. 766.23  
 R.R. Spike in Pole  
 B.T. Co. "A195  
 16' Lt. Sta. 11+65



L.O.S. STA. 13+00.00 SUR. & CONSTR. E

P.I. STA. 9+66.07 CONSTR. E & SUR. E  
 P.I. Sta. 9+66.07 Constr. E  
 $\Delta = 11^\circ - 56' - 10''$  Lt.  
 $D = 22^\circ - 00'$   
 $T = 27.23'$   
 $L = 54.25'$   
 $R = 260.44'$



LIMIT OF WORK  
 STA. 12+98.00  
 MAIN ST.  
 DICKSON CITY BORO.  
 LACKAWANNA CO.

**LEGEND**

- WATER SHUT OFF
- ⊠ GAS SHUT OFF
- MANHOLE
- UTILITY POLE
- FIRE HYDRANT
- DEPRESSED CURB
- ▨ REINFORCED CONCRETE SIDEWALK
- ▨ BITUMINOUS WALK ADJUSTMENT
- ▨ BITUMINOUS DRIVE ADJUSTMENT
- STORM LINE
- ▨ CEMENT CONCRETE SIDEWALK
- ▨ SEEDING & MULCHING
- TYPE A MANHOLE
- ▨ SODDING

