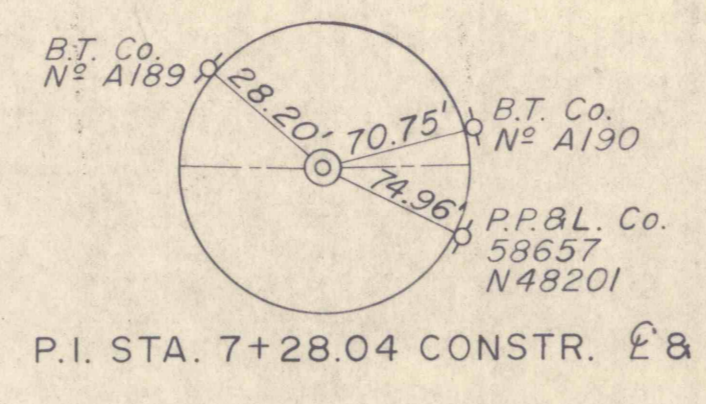
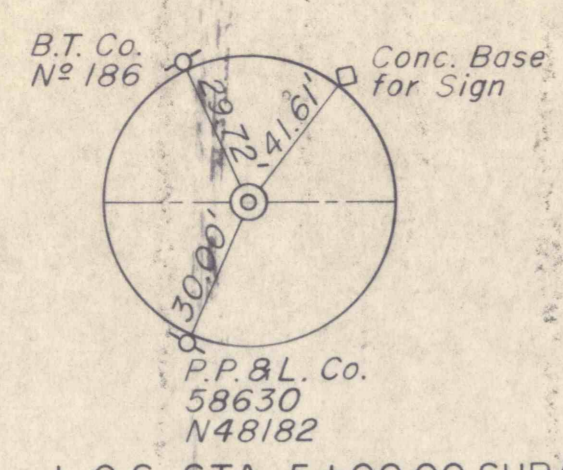
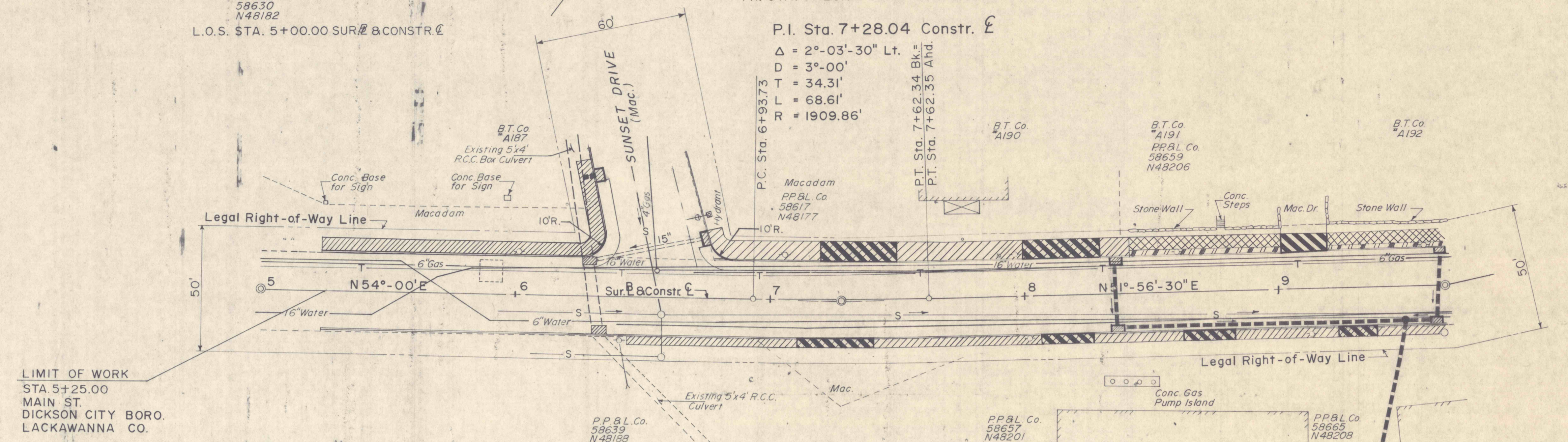


DISTRICT	COUNTY	ROUTE	SECTION	SHEET
4-0	LACKAWANNA	MAIN ST.		10 of 28
DICKSON CITY BOROUGH				
REVISION NUMBER	REVISIONS			DATE BY

B.M. No. 1 Elev. 770.58  
 R.R. Spike in Pole  
 "58630/N48182  
 Rt. Sta. 4+76



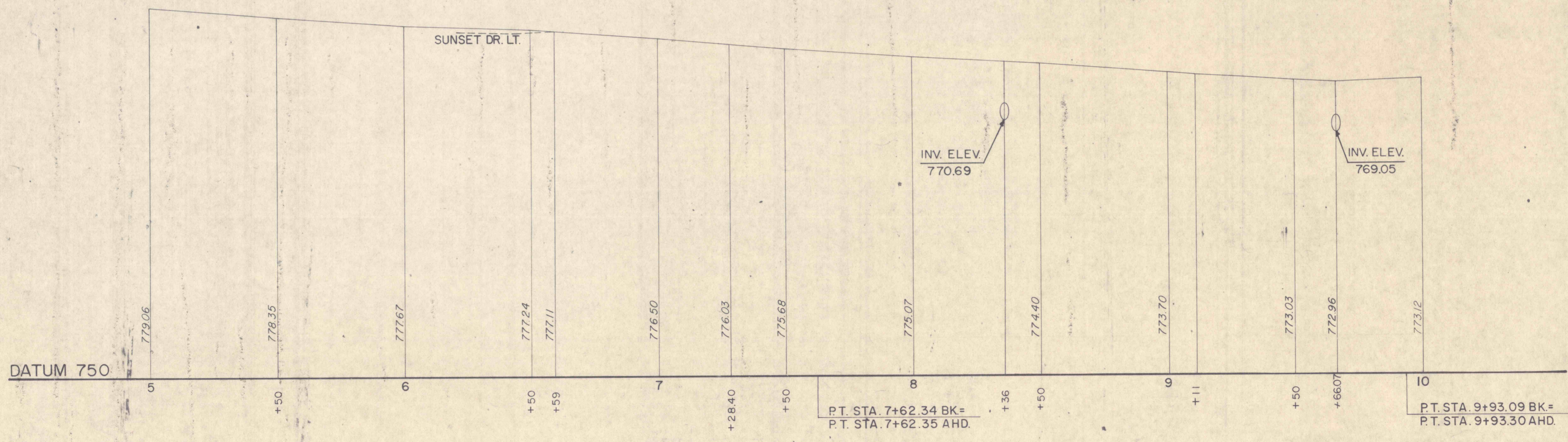
P.I. Sta. 7+28.04 Constr. & SUR.  
 $\Delta = 2^{\circ}-03'-30''$  Lt.  
 $D = 3^{\circ}-00'$   
 $T = 34.31'$   
 $L = 68.61'$   
 $R = 1909.86'$



LIMIT OF WORK  
 STA. 5+25.00  
 MAIN ST.  
 DICKSON CITY BORO.  
 LACKAWANNA CO.

**LEGEND**

- ◉ WATER SHUT OFF
- ◉ GAS SHUT OFF
- MANHOLE
- UTILITY POLE
- FIRE HYDRANT
- DEPRESSED CURB
- ▨ REINFORCED CONCRETE SIDEWALK
- ▨ BITUMINOUS WALK ADJUSTMENT
- ▨ BITUMINOUS DRIVE ADJUSTMENT
- ▨ STORM LINE
- ▨ CEMENT CONCRETE SIDEWALK
- ▨ SEEDING & MULCHING
- TYPE A MANHOLE
- ▨ SODDING



P.T. STA. 7+62.34 BK=  
 P.T. STA. 7+62.35 AHD.

P.T. STA. 9+93.09 BK=  
 P.T. STA. 9+93.30 AHD.

TRACED BY \_\_\_\_\_  
 FINAL BY \_\_\_\_\_