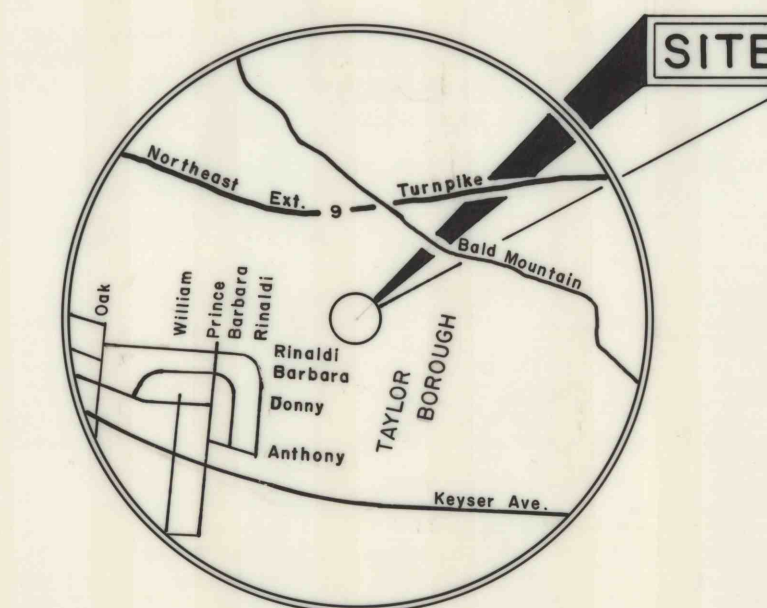
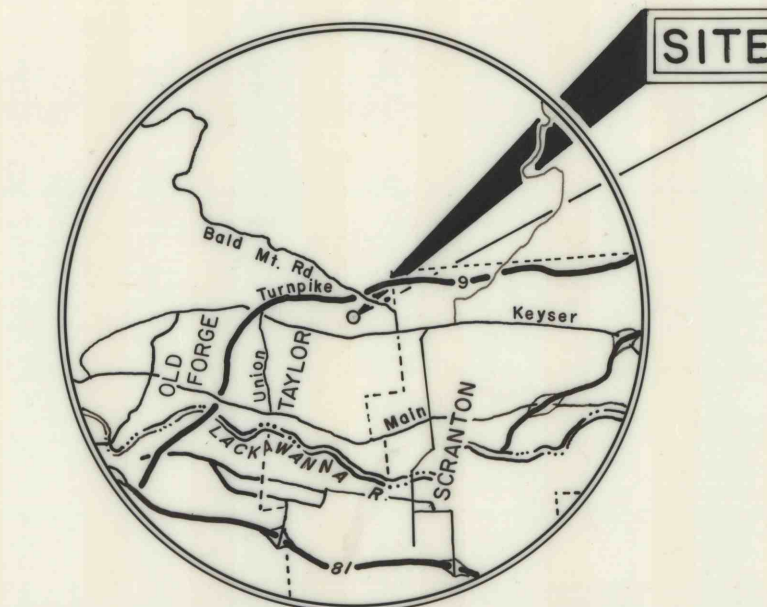
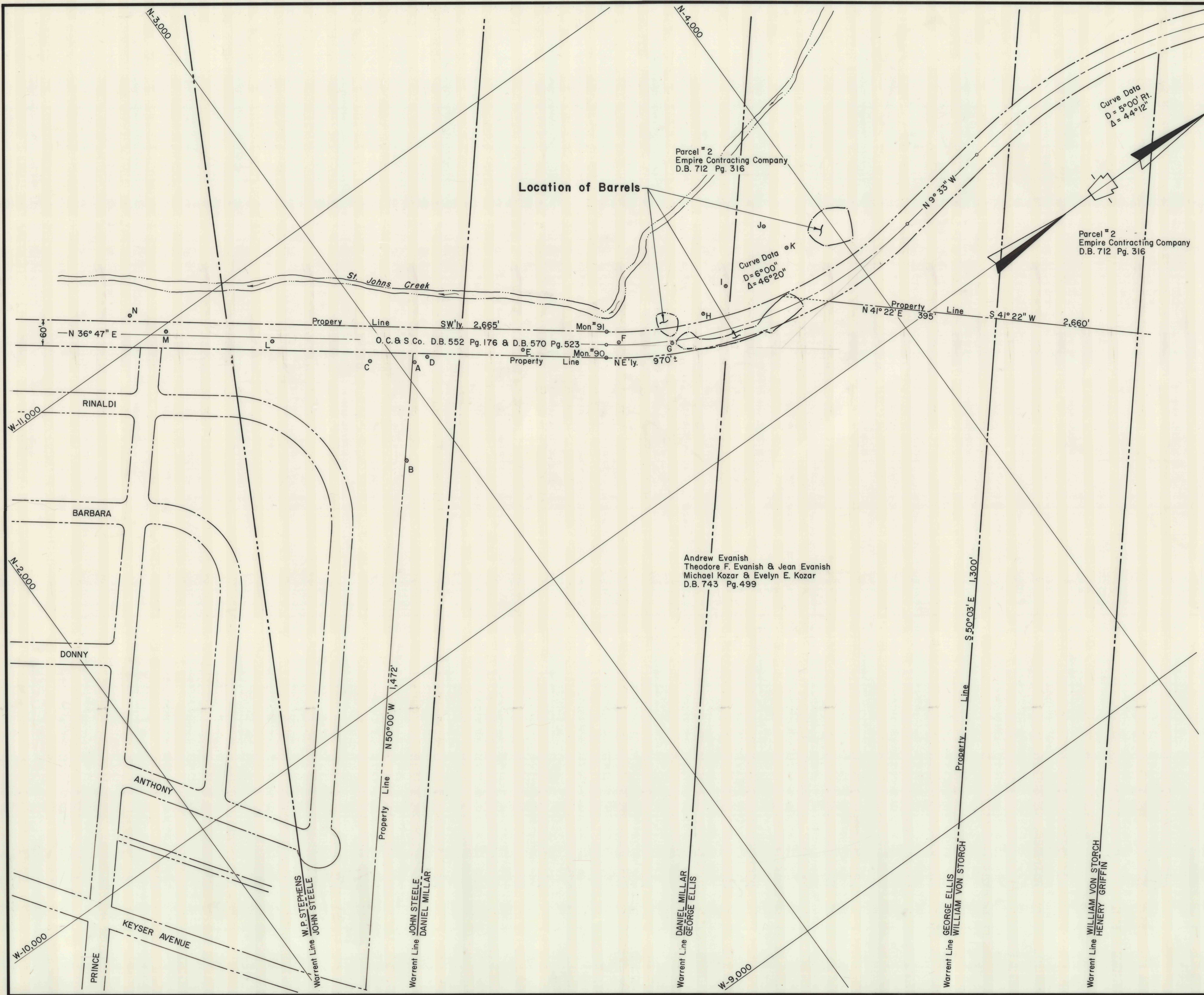


25-041



NO.	DATE	REVISION	APPR.

COMMONWEALTH OF PENNSYLVANIA
DEPARTMENT OF ENVIRONMENTAL RESOURCES
OFFICE OF RESOURCES MANAGEMENT

BARRELS INVESTIGATION
TAYLOR BOROUGH
LACKAWANNA COUNTY, PENNSYLVANIA

SURFACE

DRAWN BY: _____ DATE: Apr. 3, 1981 DRAWING NO.: _____
CHECKED BY: _____ SCALE: 1 in. = 100 ft.

25-041