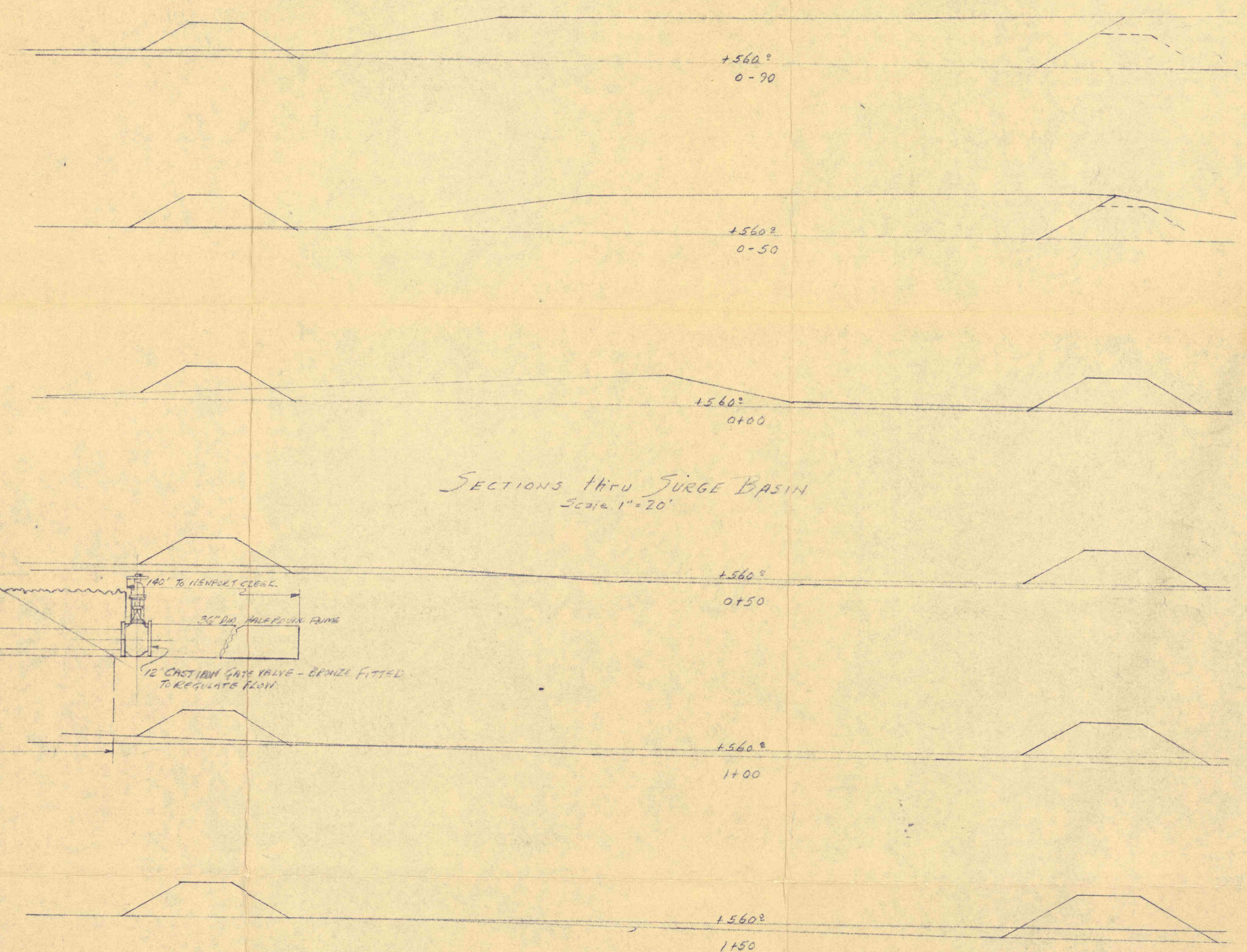
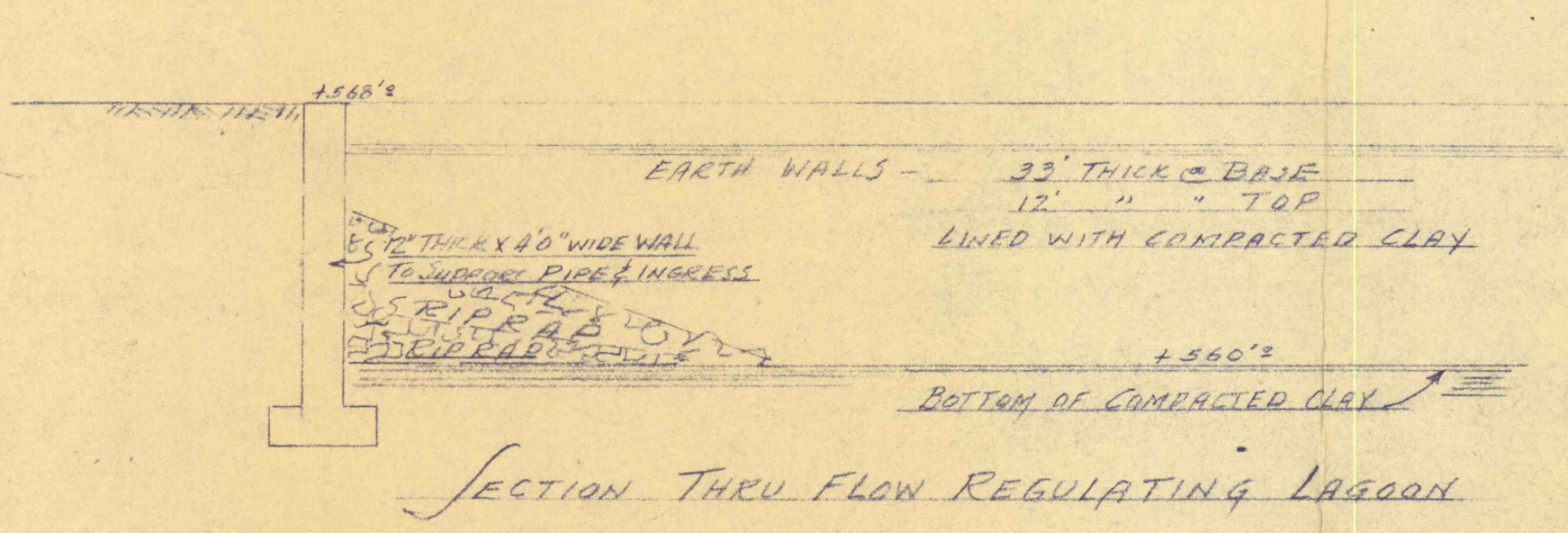


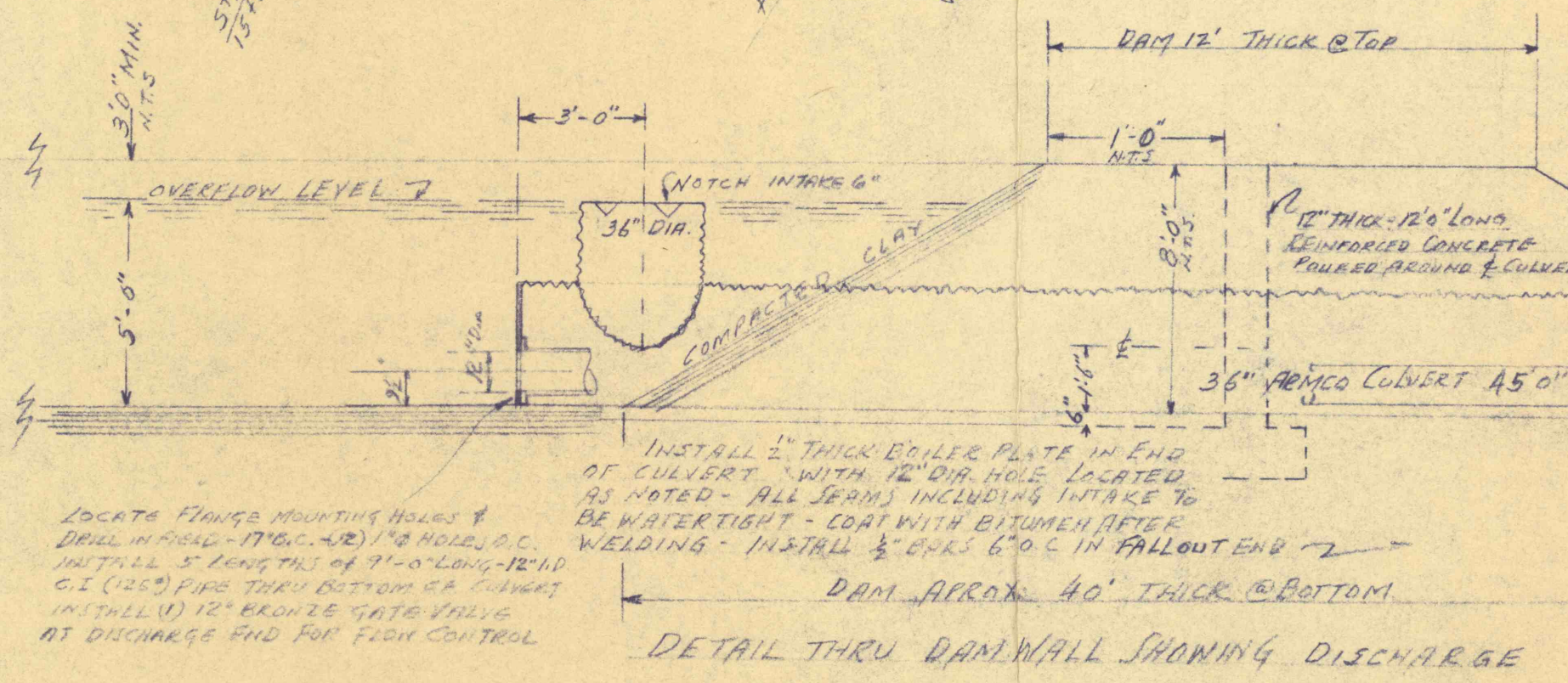
METHOD OF INSTALLING 2" DIA. CONVEYER
 HAVE CONTINUOUS 2" DIA. GROUND OVER COARSE
 SIFT THROUGH 1/2" DEEP 2" DIA. BUCKLE
 AND PAULI SAND WITH AIR LIFT. USING GOOD PAVEMENT
 SUCH AS CR. BIT. OR JON CONTAINING GRIT



SECTIONS THRU SURGE BASIN
 Scale 1" = 20'



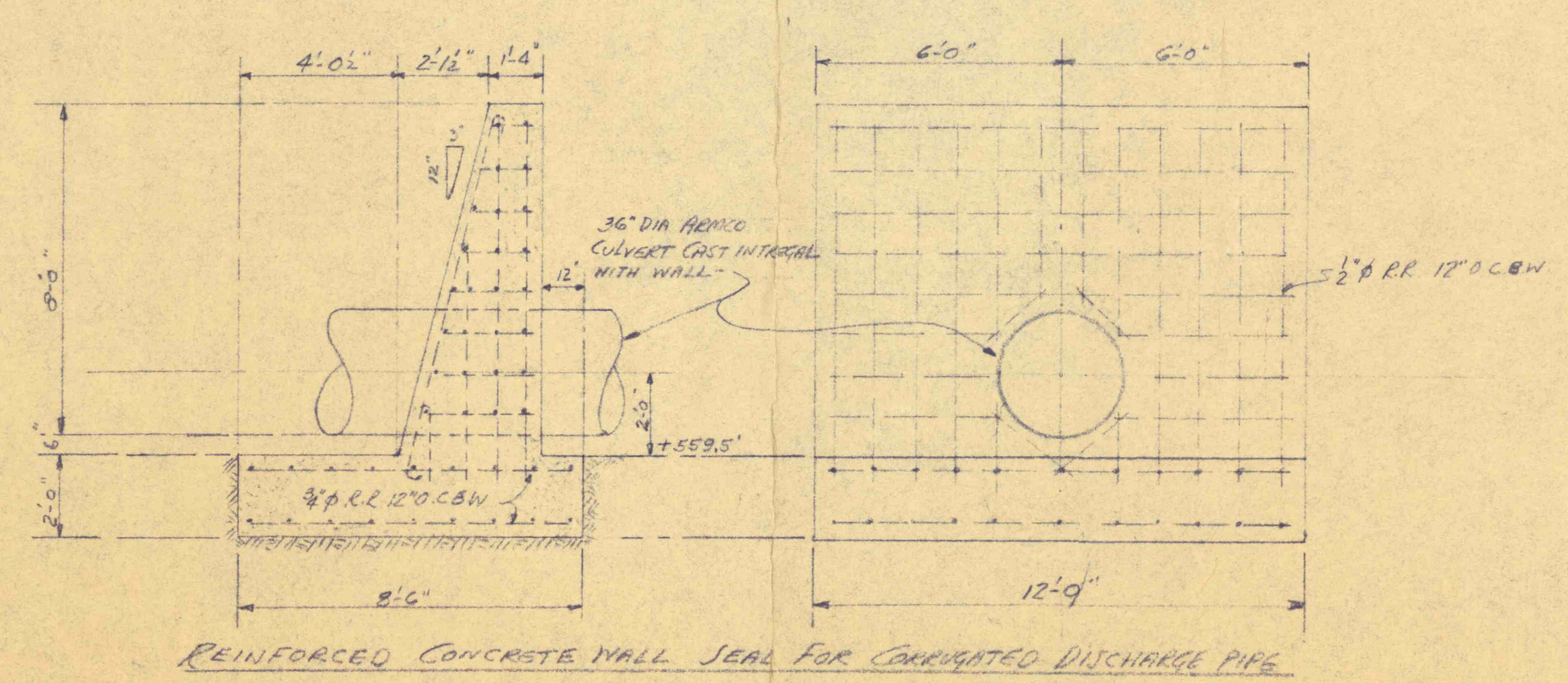
SECTION THRU FLOW REGULATING LAGOON



DETAIL THRU DAM WALL SHOWING DISCHARGE

LOCATE FLANGE MOUNTING HOLES &
 DRILL IN FIELD - (7/16" DIA. HOLES) -
 INSTALL 3" LONG PINS OF 1/2" DIA. -
 G.T. (GATE TIE) FROM TOP OF CONVEYER
 INSTALL 1/2" HOLE GATE VALVE
 AT DISCHARGE END FOR FISH CONTROL

INSTALL 2" THICK ROLLER PLATE IN END
 OF CONVEYER WITH 1/2" DIA. HOLE LOCATED
 AS NOTED - ALL SEAMS INCLUDING INTERSE
 BE WATERTIGHT - COAT WITH BITUMEN DEEP
 WELDING - INSTALL 3/4" DIA. C IN FALLOUT END



REINFORCED CONCRETE WALL SEAL FOR CONVEYER DISCHARGE PIPE

LOCATION OF FLUMES FROM PUMP DISCHARGE TO
 NEWPORT CREEK - SHOWING HOLDING LAGOON
 800HP DEEPWELL PUMP INSTALLATION - GLEN HAN MINE #3 COPE
 SUSQUEHANNA ANTHRACITE INC. OCT 28, 1969