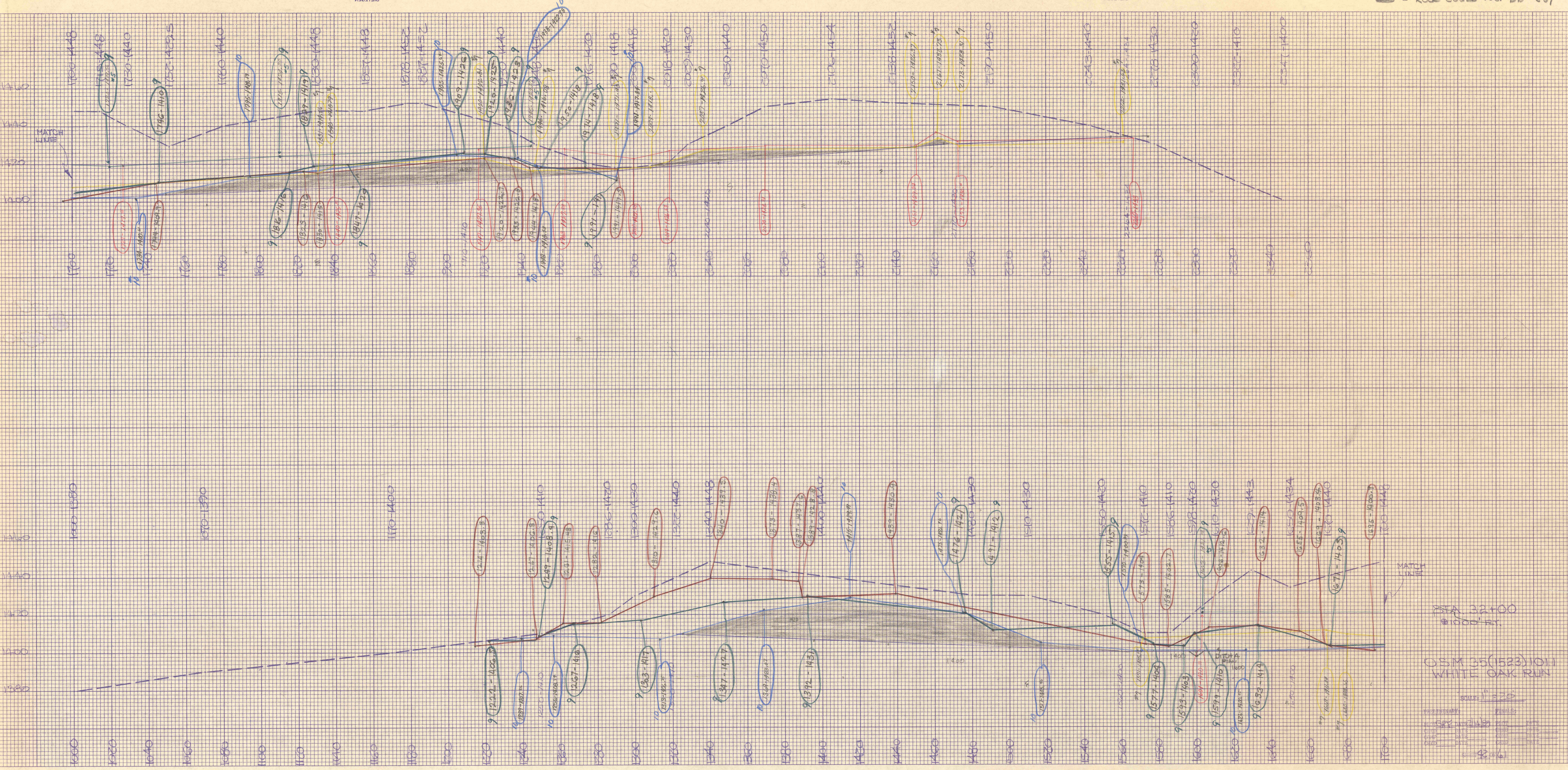


TOTAL CUT = 26,420 S.F.  
 EST #5 = 6,546  
 1987A - REMAINING  
 3314 S.F.  
 EST #6  
 1650 S.F. REMAINING

ROCK COULD NOT BE CUT



STA 32+00  
 1000' RT.  
 OSM 35(1523)1011  
 WHITE OAK RUN  
 SCALE: 1" = 20'  
 DATE: 11/15/87  
 DRAWN BY: [Signature]  
 CHECKED BY: [Signature]