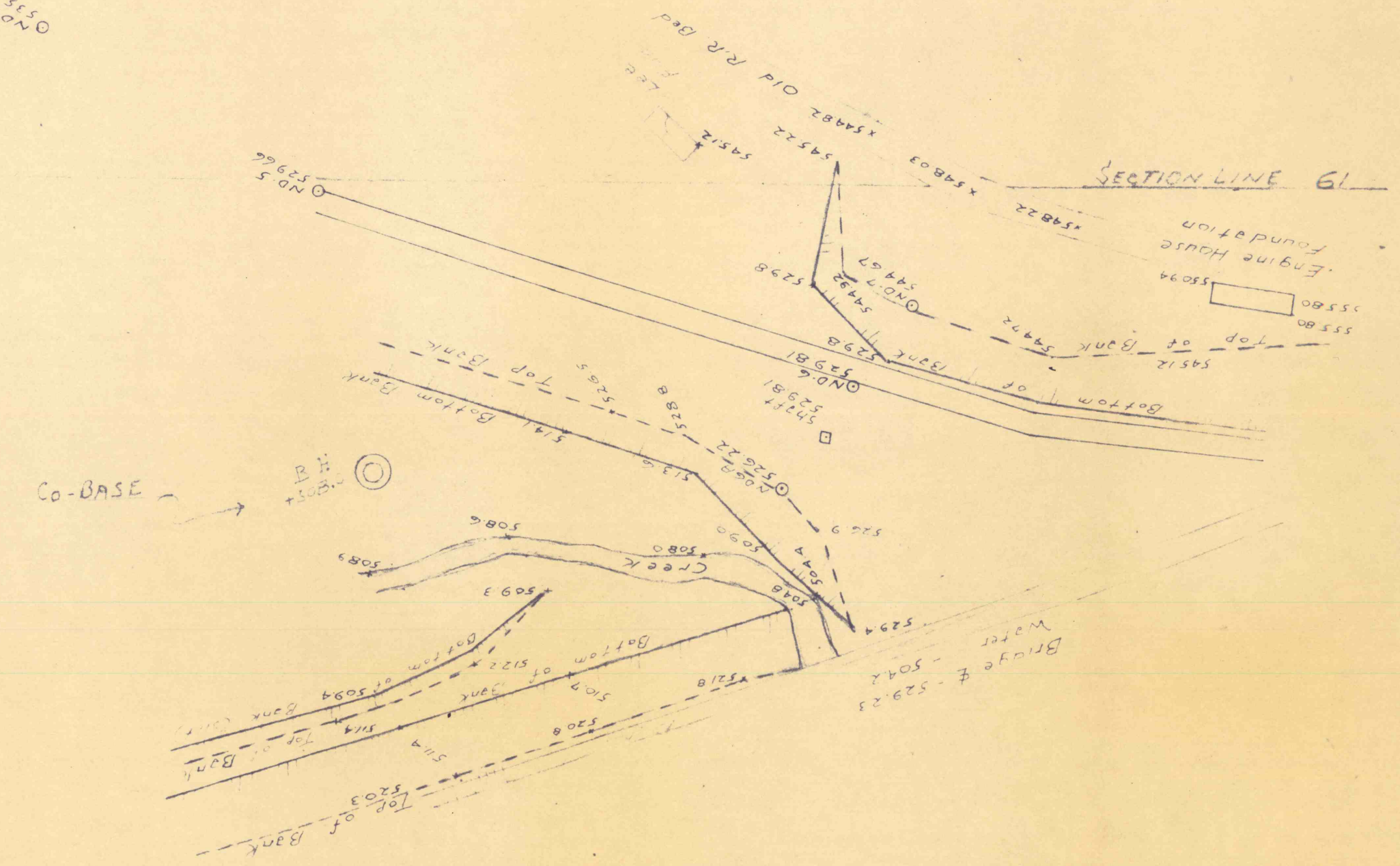


PROPOSED TYPICAL SECTION  
OF  
NANTICOKE OUTFALL (BOREHOLE)

No. 2 SHAFT - GEO + 545.42 BOLT IN CONCRETE BASE  
Co BASE + 536.54  
SHAFT - WATER FLOW GEO + 540.47  
Co BASE + 531.59

No. 2 SHAFT  
GEO + 545.42 BOLT IN CONCRETE BASE  
Co BASE + 536.54  
SHAFT WATER FLOW  
GEO + 540.47  
Co BASE + 531.59



NANTICOKE OUTFLOW  
SCALE 1" = 100'

ELEVATIONS ON SUSQUEHANNA COAL COMPANY BASE  
ADD 888 FOR U.S. GEODETIC BASE