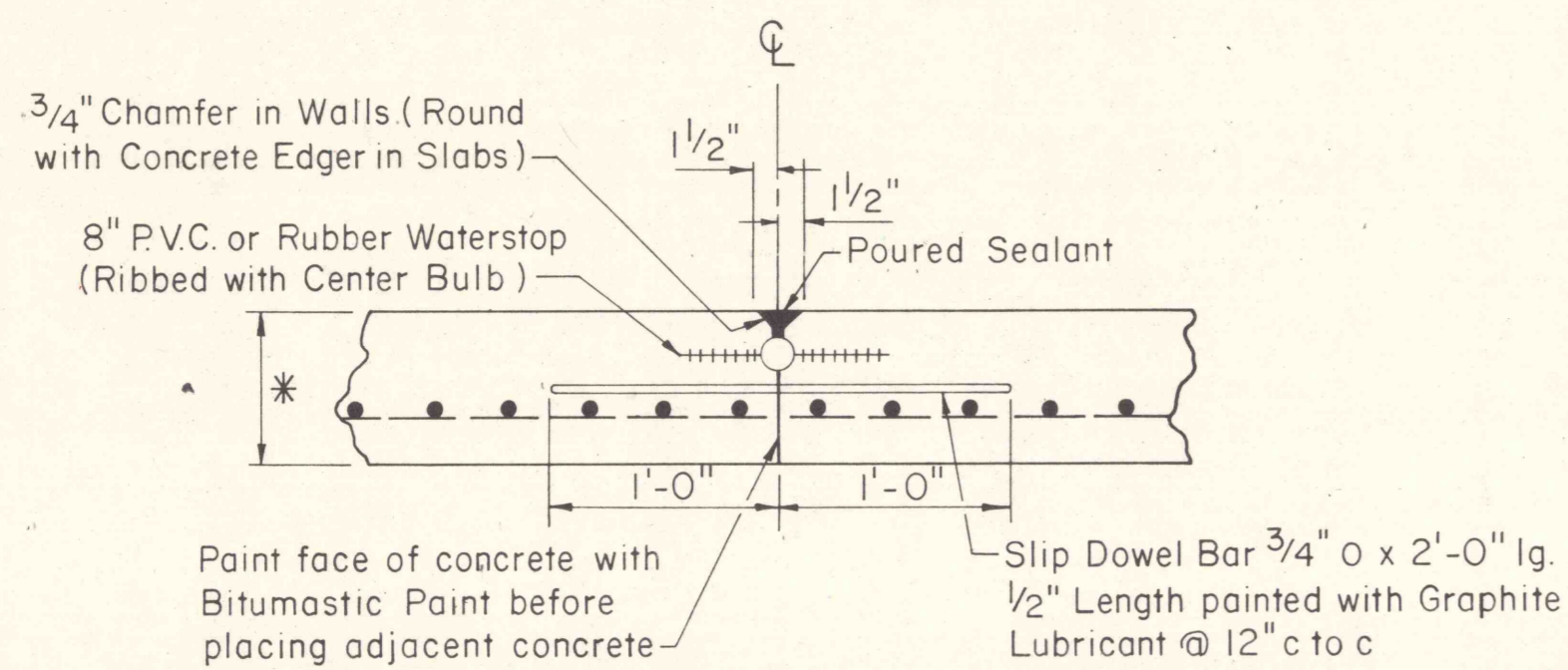
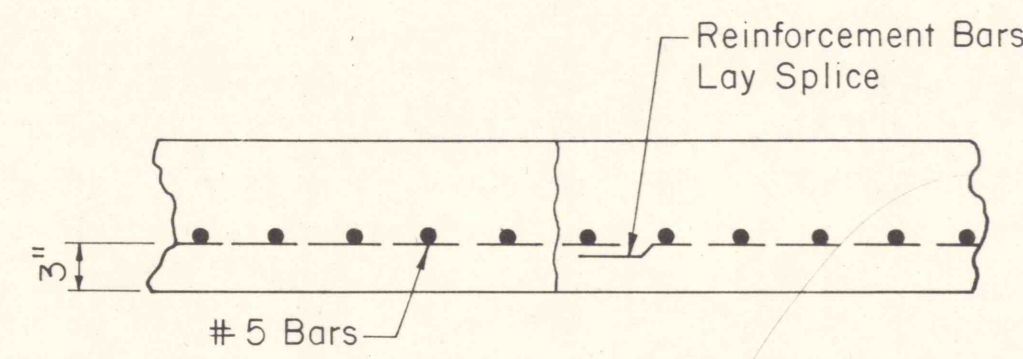


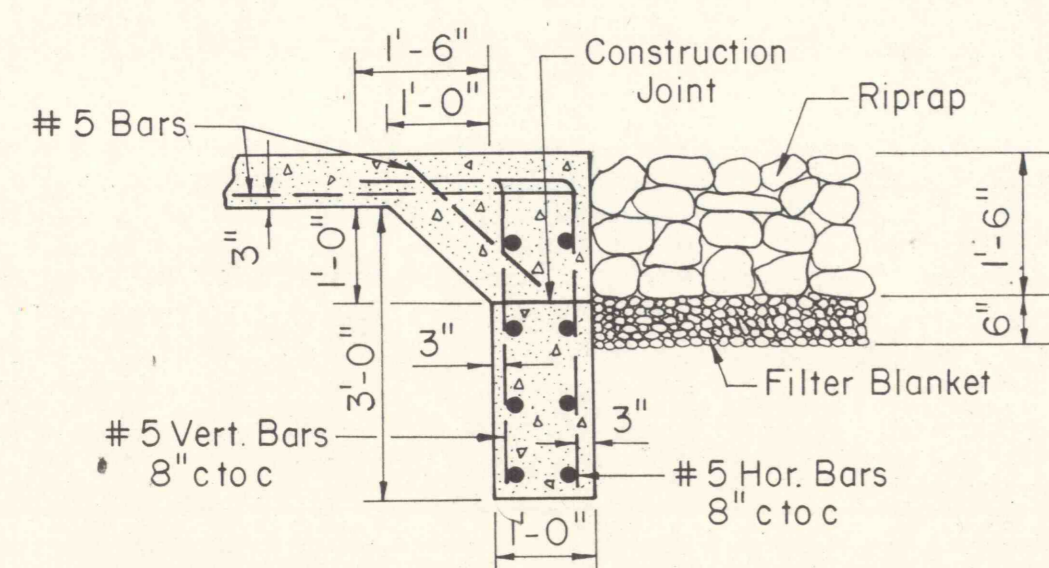
**TYPICAL DETAIL - EXPANSION JOINT**  
NOT TO SCALE  
MAXIMUM SPACING - 90'



**TYPICAL DETAIL - CONTRACTION JOINT**  
NOT TO SCALE  
MAXIMUM SPACING - 30'

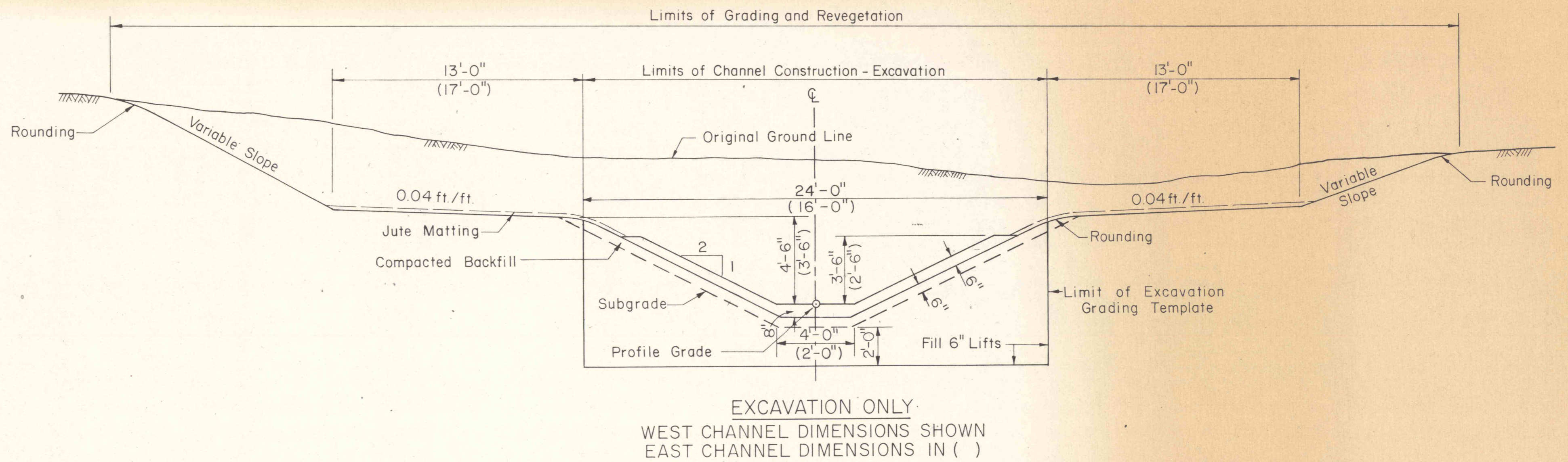


**TYPICAL DETAIL - CONSTRUCTION JOINT**  
NOT TO SCALE

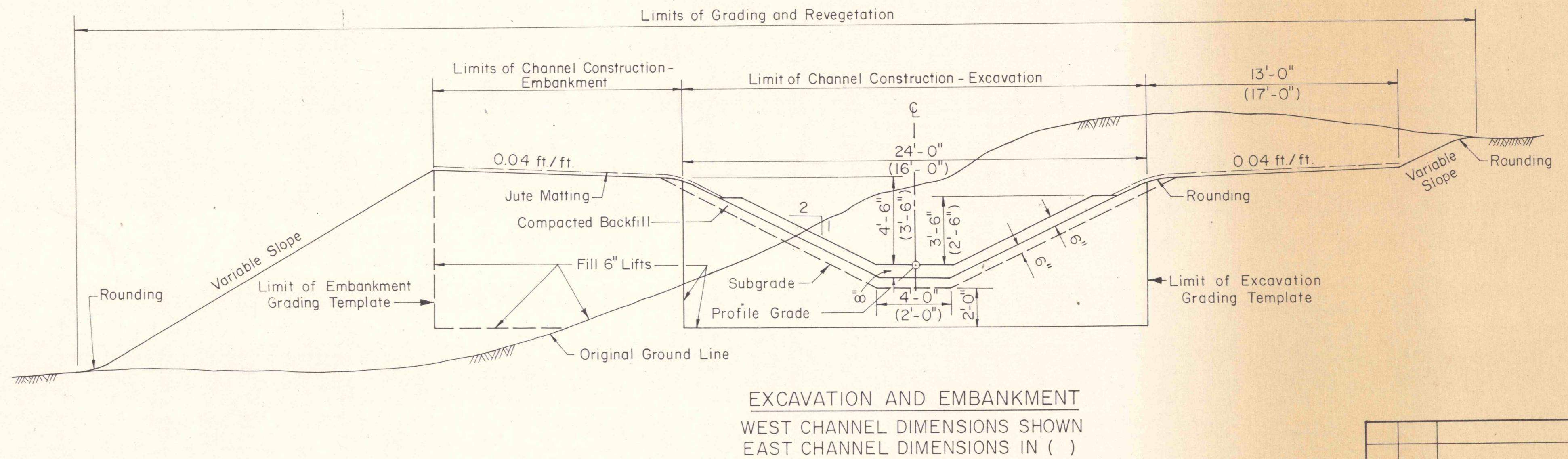


**TYPICAL DETAIL - CUTOFF WALL**  
NOT TO SCALE

NOTE: Located at upstream and downstream end of Reinforced Concrete Channel on bottom only.



**EXCAVATION ONLY**  
WEST CHANNEL DIMENSIONS SHOWN  
EAST CHANNEL DIMENSIONS IN ( )



**EXCAVATION AND EMBANKMENT**  
WEST CHANNEL DIMENSIONS SHOWN  
EAST CHANNEL DIMENSIONS IN ( )

**TYPICAL SECTION - REINFORCED CONCRETE CHANNEL**  
NOT TO SCALE

NO	DATE	REVISION	APPR.
SUBMITTED			
PROFESSIONAL			
APPROVED			
CHIEF - DIVISION OF MINE RECLAMATION			
APPROVED			
DIRECTOR - BUREAU OF DESIGN			
COMMONWEALTH OF PENNSYLVANIA DEPARTMENT OF ENVIRONMENTAL RESOURCES OFFICE OF RESOURCES MANAGEMENT			
PROJECT NO. SL 113-5-1			
MINE DRAINAGE POLLUTION ABATEMENT COAL RUN SHAMOKIN CREEK WATERSHED NORTHUMBERLAND COUNTY, PA.			
ERDMAN, ANTHONY, ASSOCIATES Consulting Engineers Camp Hill, Pa. Rochester, N.Y.			
<b>REINFORCED CONCRETE CHANNEL DETAILS</b>			
DRAWN BY GMS	DATE	DRAWING NO.	
CHECKED BY DHC	SCALE		
			24 of 26