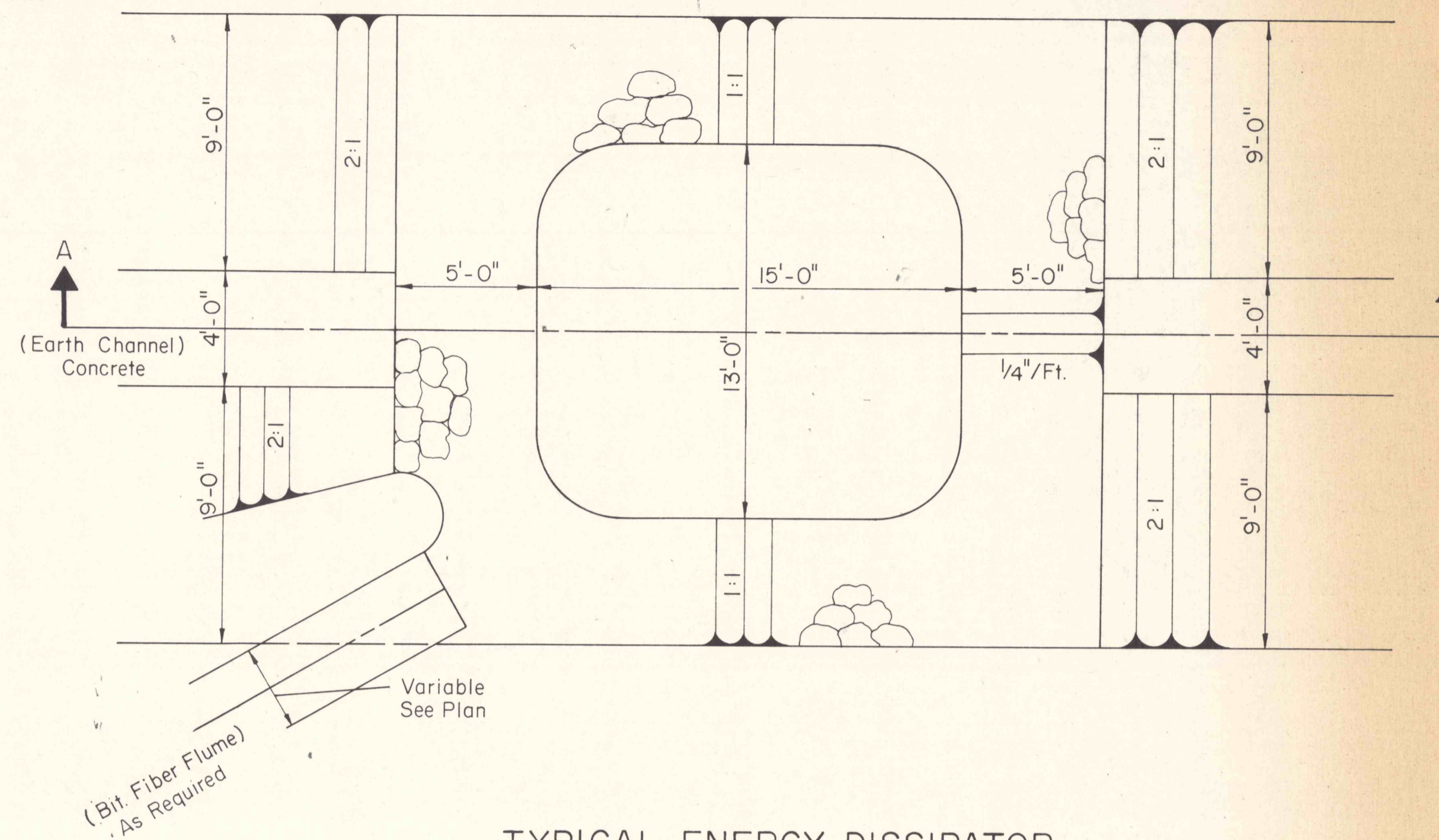


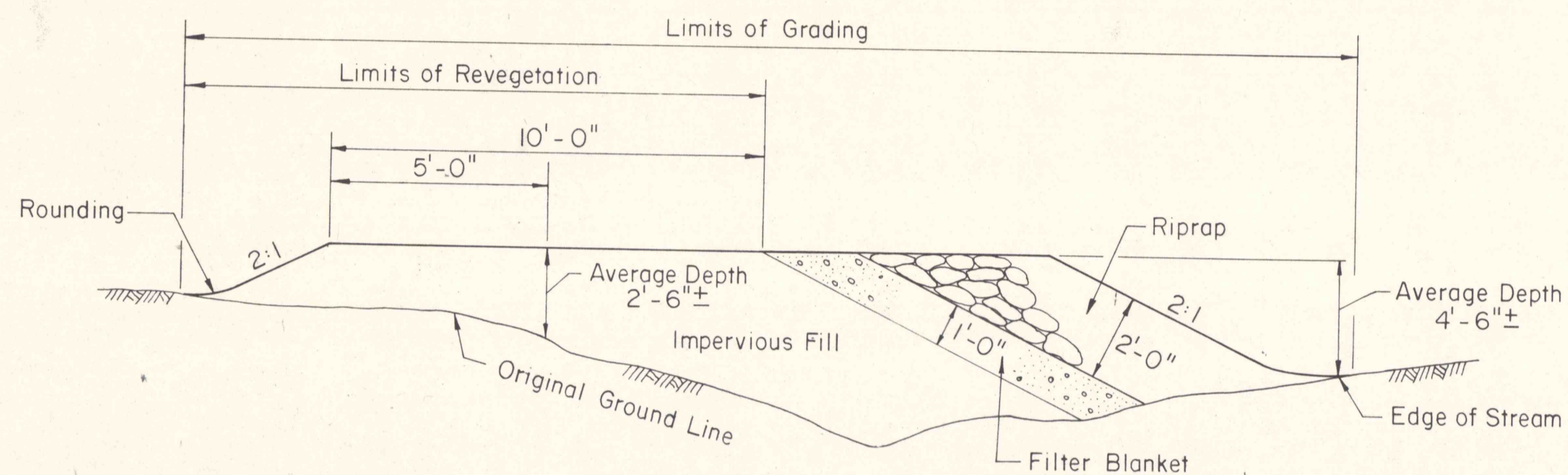
NOTE:  $1\frac{1}{2}$ :1 Slopes on the Uphill Side shall be used in Areas designated by the Engineer when the terrain will not permit the use of 2:1 Slopes.

**TYPICAL DETAIL - DIVERSION DITCH**  
NOT TO SCALE

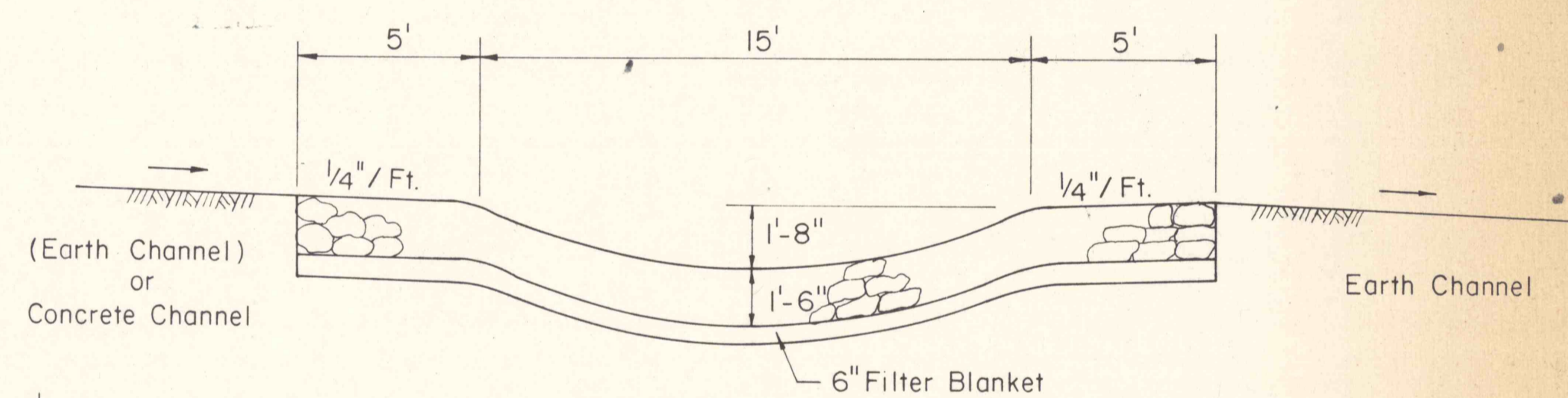


**TYPICAL ENERGY DISSIPATOR**

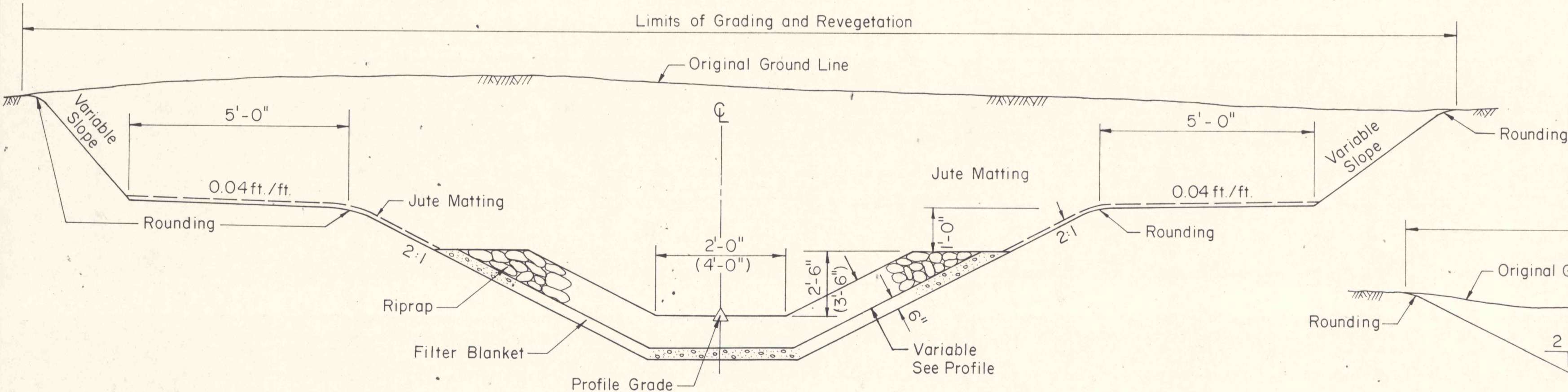
TYPE A SHOWN - TYPE B IN ( )  
SCALE:  $\frac{1}{4}'' = 1'$



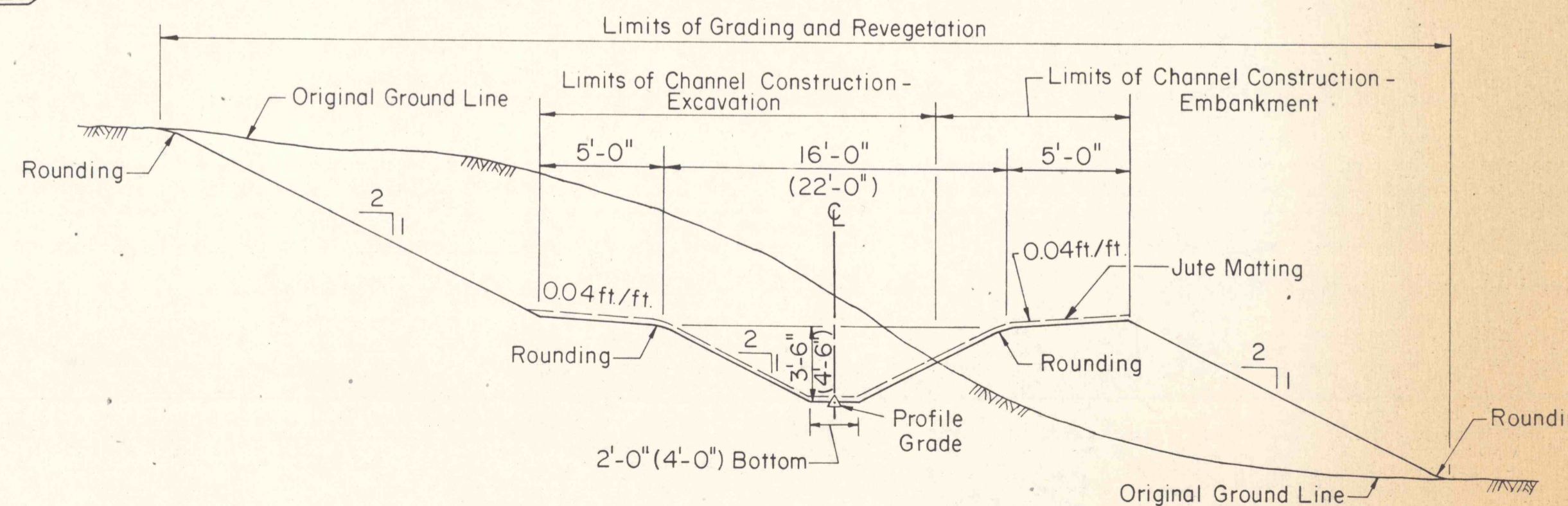
**TYPICAL DETAIL - DIVERSION BERM**  
NOT TO SCALE



**SECTION A-A**  
SCALE  $\frac{1}{4}'' = 1'$



**TYPICAL DETAIL - RIPRAP CHANNEL**  
NOT TO SCALE



**TYPICAL DETAIL - RELOCATED AND RESTORED CHANNEL**

DIMENSIONS FOR 2'-0" CHANNEL BOTTOM SHOWN  
DIMENSIONS FOR 4'-0" CHANNEL BOTTOM IN ( )

NOT TO SCALE

NO	DATE	REVISION	APPR.

COMMONWEALTH OF PENNSYLVANIA  
DEPARTMENT OF ENVIRONMENTAL RESOURCES  
OFFICE OF RESOURCES MANAGEMENT

PROJECT NO. SL 113-5-1

MINE DRAINAGE POLLUTION ABATEMENT  
COAL RUN  
SHAMOKIN CREEK WATERSHED  
NORTHUMBERLAND COUNTY, PA.

ERDMAN, ANTHONY, ASSOCIATES  
Consulting Engineers  
Camp Hill, Pa. Rochester, N.Y.

**TYPICAL CHANNEL DETAILS**

DRAWN BY GMS	DATE	DRAWING NO.
CHECKED BY DHC	SCALE AS SHOWN	21 of 26