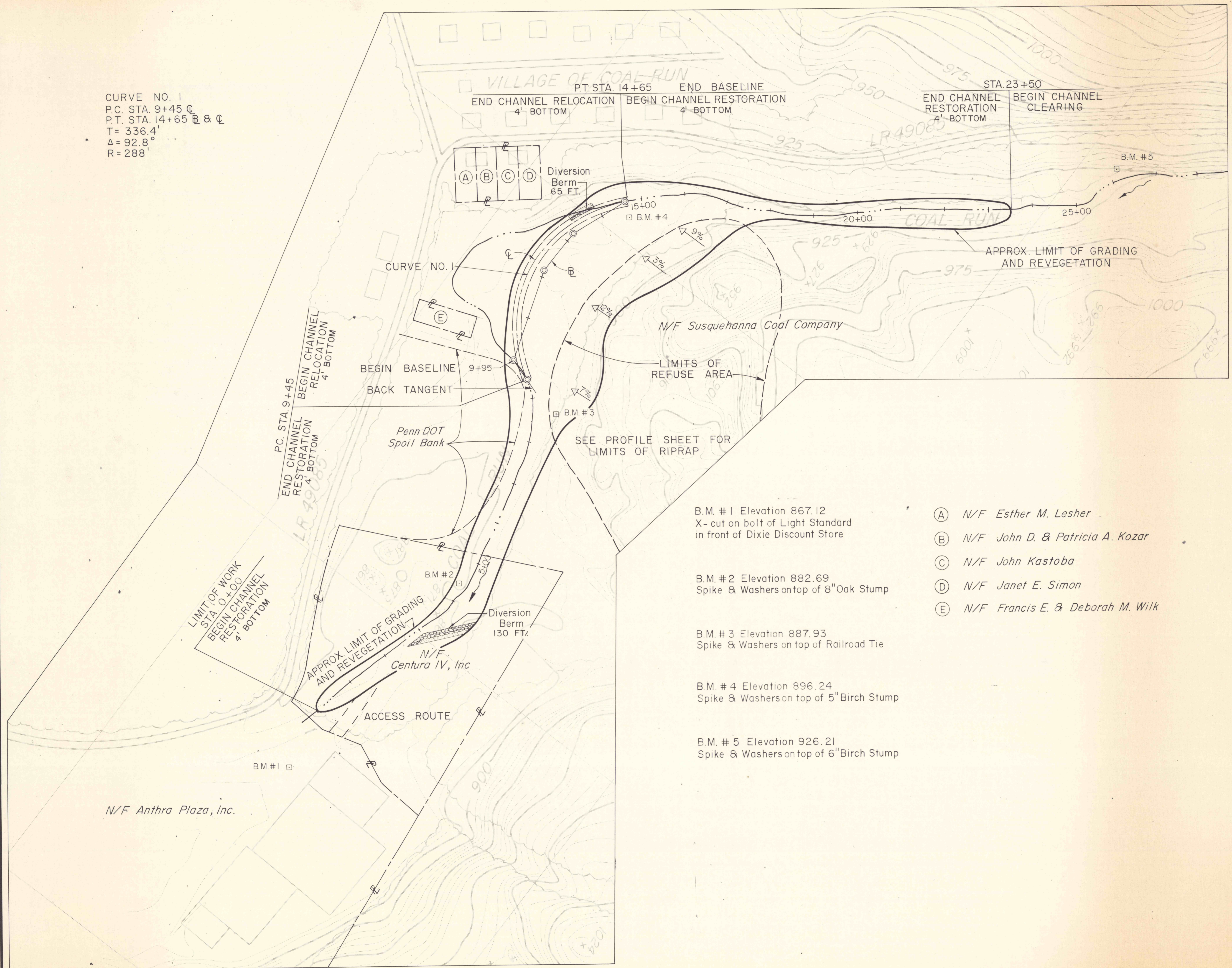


CURVE NO. 1
 P.C. STA. 9+45 C
 P.T. STA. 14+65 B & Q
 T = 336.4'
 Δ = 92.8°
 R = 288'



Match to Sheet 4

- B.M. #1 Elevation 867.12
X-cut on bolt of Light Standard
in front of Dixie Discount Store
- B.M. #2 Elevation 882.69
Spike & Washers on top of 8" Oak Stump
- B.M. #3 Elevation 887.93
Spike & Washers on top of Railroad Tie
- B.M. #4 Elevation 896.24
Spike & Washers on top of 5" Birch Stump
- B.M. #5 Elevation 926.21
Spike & Washers on top of 6" Birch Stump

- (A) N/F Esther M. Leshar
- (B) N/F John D. & Patricia A. Kozar
- (C) N/F John Kastoba
- (D) N/F Janet E. Simon
- (E) N/F Francis E. & Deborah M. Wilk

NO	DATE	REVISION	APPR
SUBMITTED			
PROFESSIONAL			
APPROVED			
CHIEF - DIVISION OF MINE RECLAMATION			
APPROVED			
DIRECTOR - BUREAU OF DESIGN			
COMMONWEALTH OF PENNSYLVANIA DEPARTMENT OF ENVIRONMENTAL RESOURCES OFFICE OF RESOURCES MANAGEMENT			
PROJECT NO. SL 113-5-1			
MINE DRAINAGE POLLUTION ABATEMENT COAL RUN SHAMOKIN CREEK WATERSHED NORTHUMBERLAND COUNTY, PA.			
ERDMAN, ANTHONY, ASSOCIATES Consulting Engineers Camp Hill, Pa. Rochester, N.Y.			
PLAN			
DRAWN BY GMS	DATE	DRAWING NO.	3 of 26
CHECKED BY	SCALE 1" = 100'		