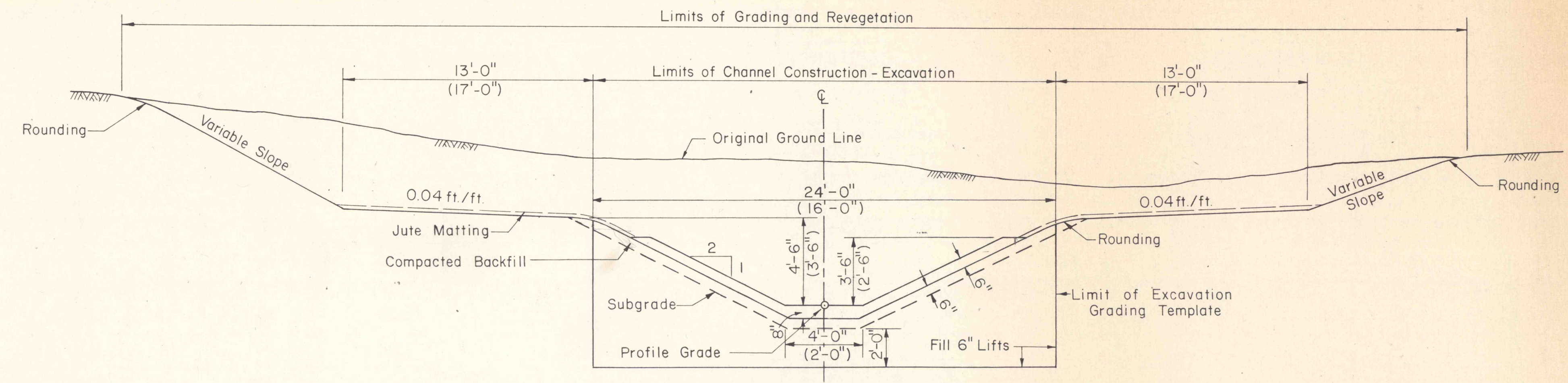
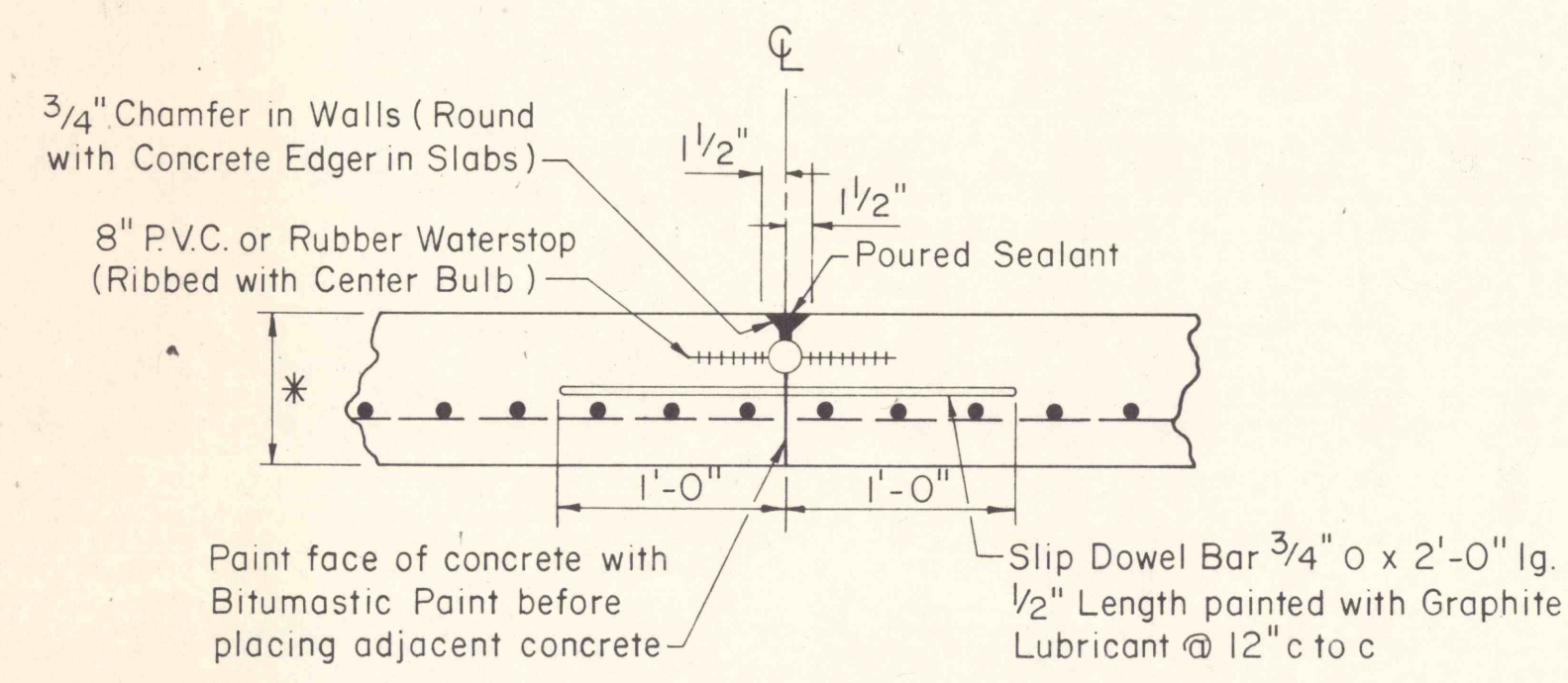


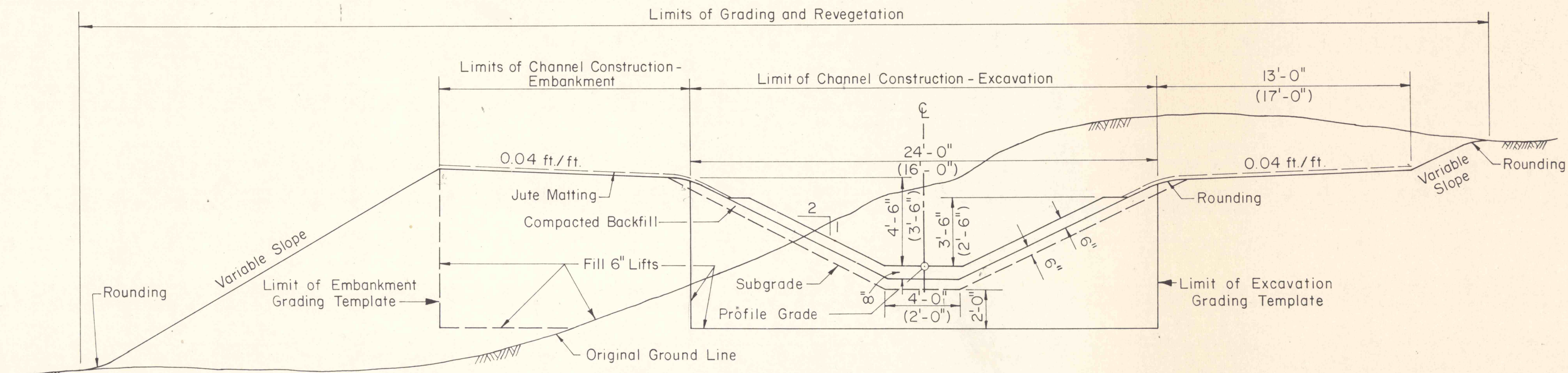
**TYPICAL DETAIL - EXPANSION JOINT**  
 NOT TO SCALE  
 MAXIMUM SPACING - 90'



**EXCAVATION ONLY**  
 WEST CHANNEL DIMENSIONS SHOWN  
 EAST CHANNEL DIMENSIONS IN ( )

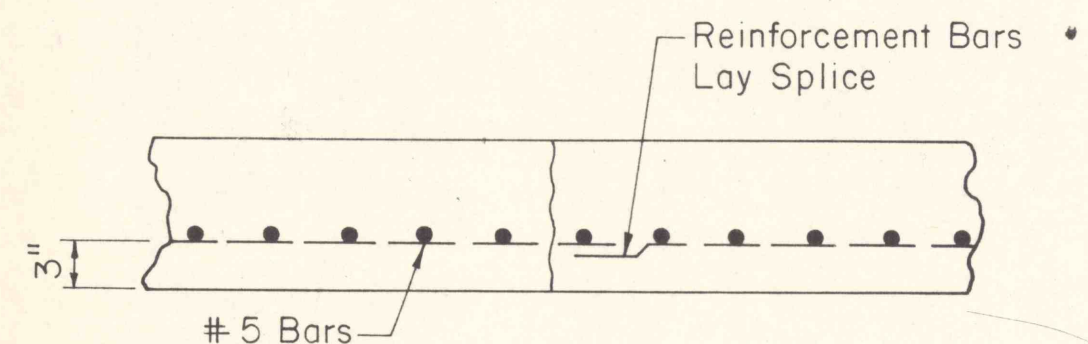


**TYPICAL DETAIL - CONTRACTION JOINT**  
 NOT TO SCALE  
 MAXIMUM SPACING - 30'

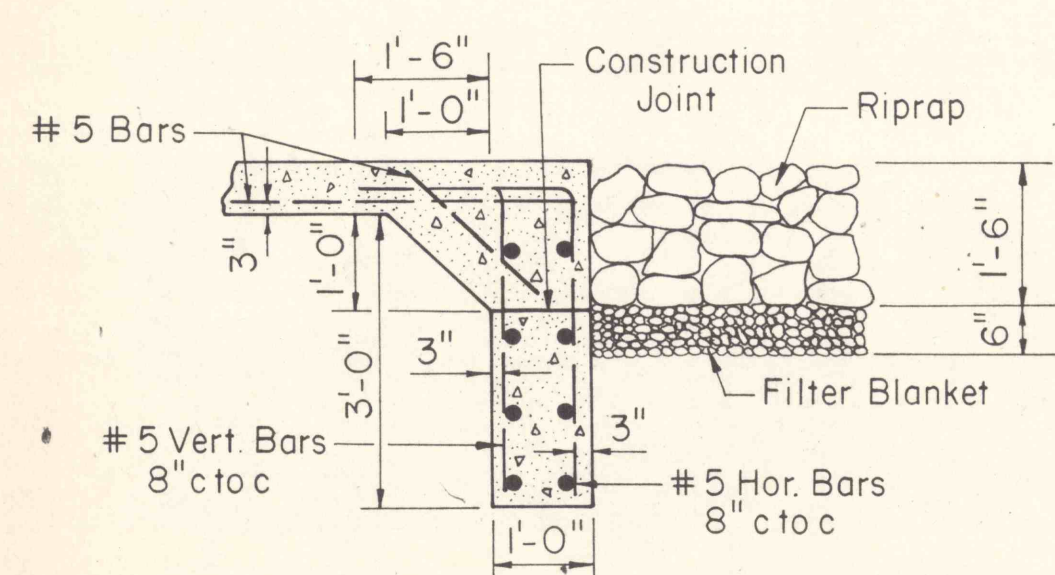


**EXCAVATION AND EMBANKMENT**  
 WEST CHANNEL DIMENSIONS SHOWN  
 EAST CHANNEL DIMENSIONS IN ( )

**TYPICAL SECTION - REINFORCED CONCRETE CHANNEL**  
 NOT TO SCALE



**TYPICAL DETAIL - CONSTRUCTION JOINT**  
 NOT TO SCALE



NOTE: Located at upstream and downstream end of Reinforced Concrete Channel on bottom only.

**TYPICAL DETAIL - CUTOFF WALL**  
 NOT TO SCALE

NO	DATE	REVISION	APPR.

COMMONWEALTH OF PENNSYLVANIA  
 DEPARTMENT OF ENVIRONMENTAL RESOURCES  
 OFFICE OF RESOURCES MANAGEMENT  
 PROJECT NO. SL 113-5-1  
 MINE DRAINAGE POLLUTION ABATEMENT  
 COAL RUN  
 SHAMOKIN CREEK WATERSHED  
 NORTHUMBERLAND COUNTY, PA.  
 ERDMAN, ANTHONY, ASSOCIATES  
 Consulting Engineers  
 Camp Hill, Pa. Rochester, N.Y.

**REINFORCED CONCRETE CHANNEL DETAILS**

DRAWN BY GMS	DATE	DRAWING NO.
CHECKED BY DHC	SCALE	24 of 26