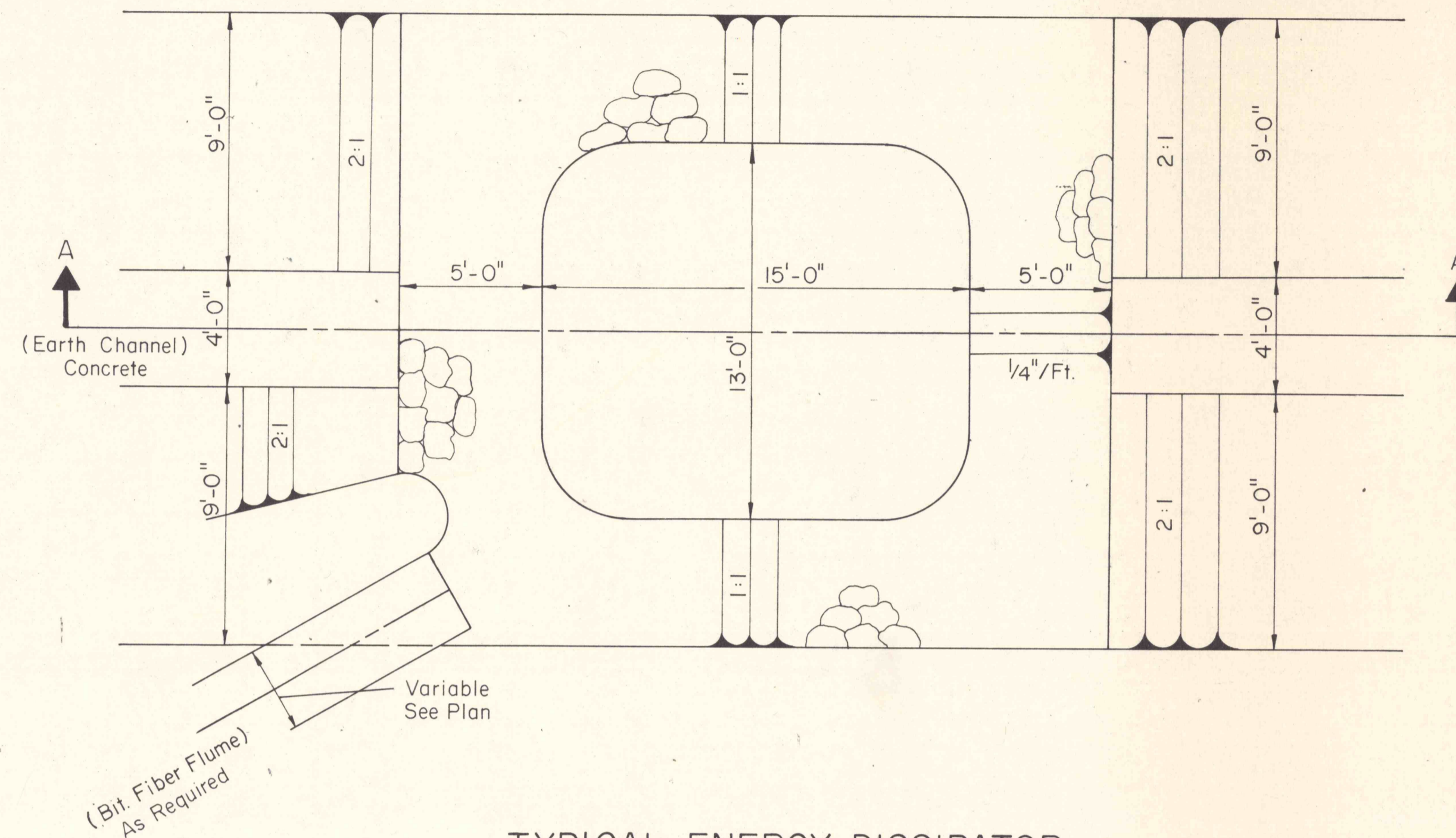
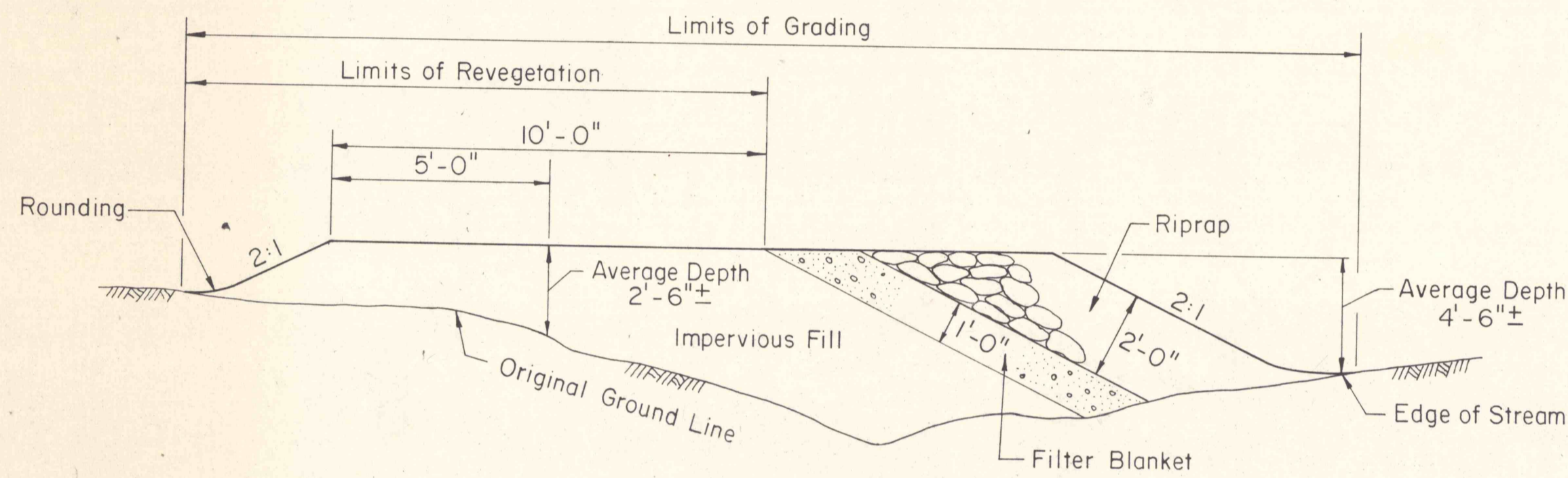


NOTE: 1/2 : 1 Slopes on the Uphill Side shall be used in Areas designated by the Engineer when the terrain will not permit the use of 2:1 Slopes.

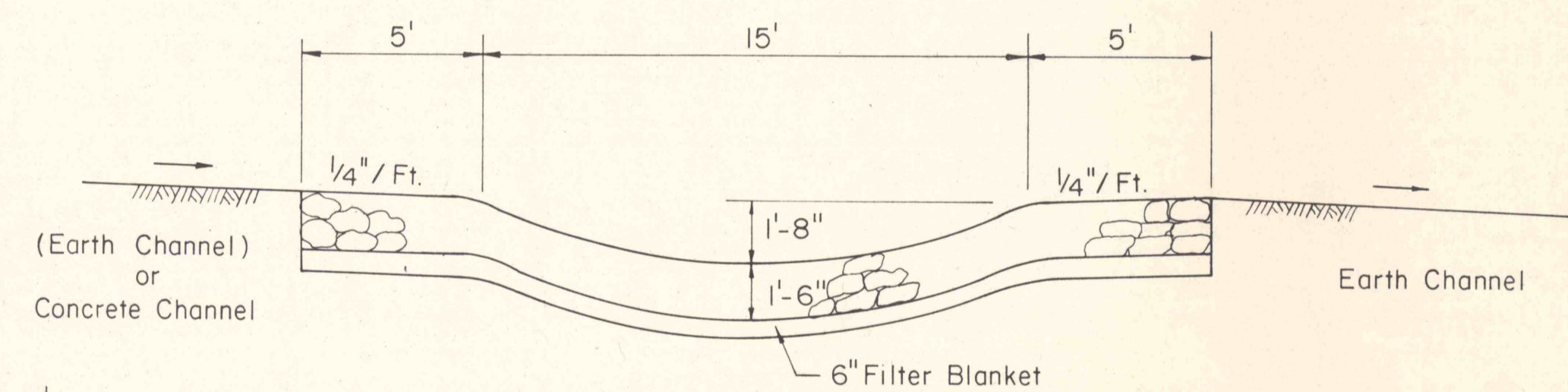
TYPICAL DETAIL - DIVERSION DITCH
NOT TO SCALE



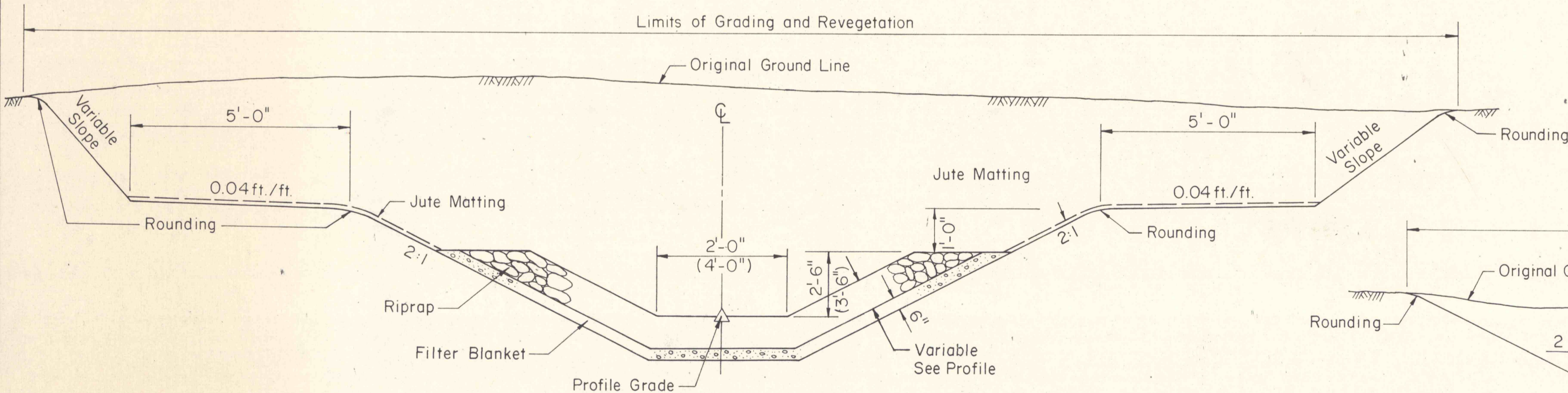
TYPICAL ENERGY DISSIPATOR
TYPE A SHOWN - TYPE B IN ()
SCALE: 1/4" = 1'



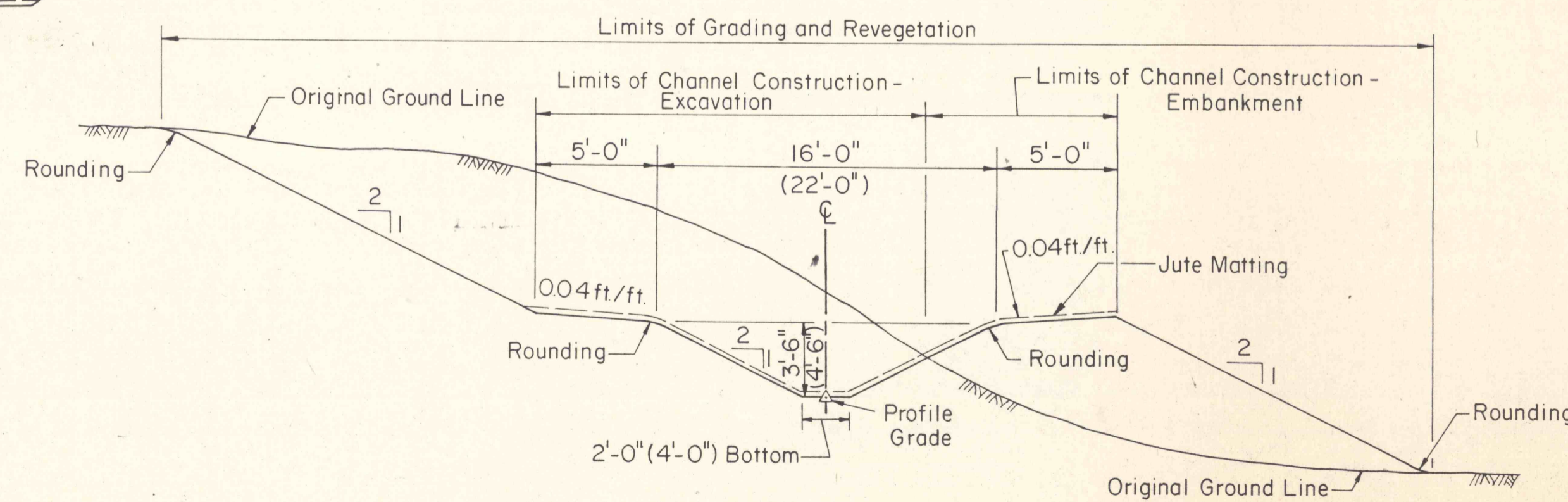
TYPICAL DETAIL - DIVERSION BERM
NOT TO SCALE



SECTION A-A
SCALE 1/4" = 1'



TYPICAL DETAIL - RIPRAP CHANNEL
NOT TO SCALE



TYPICAL DETAIL - RELOCATED AND RESTORED CHANNEL
DIMENSIONS FOR 2'-0" CHANNEL BOTTOM SHOWN
DIMENSIONS FOR 4'-0" CHANNEL BOTTOM IN ()
NOT TO SCALE

NO	DATE	REVISION	APPR

COMMONWEALTH OF PENNSYLVANIA
DEPARTMENT OF ENVIRONMENTAL RESOURCES
OFFICE OF RESOURCES MANAGEMENT

PROJECT NO. SL 113-5-1

MINE DRAINAGE POLLUTION ABATEMENT
COAL RUN
SHAMOKIN CREEK WATERSHED
NORTHUMBERLAND COUNTY, PA.

ERDMAN, ANTHONY, ASSOCIATES
Consulting Engineers
Camp Hill, Pa. Rochester, N.Y.

TYPICAL CHANNEL DETAILS

DRAWN BY GMS	DATE	DRAWING NO.
CHECKED BY DHC	SCALE AS SHOWN	21 of 26