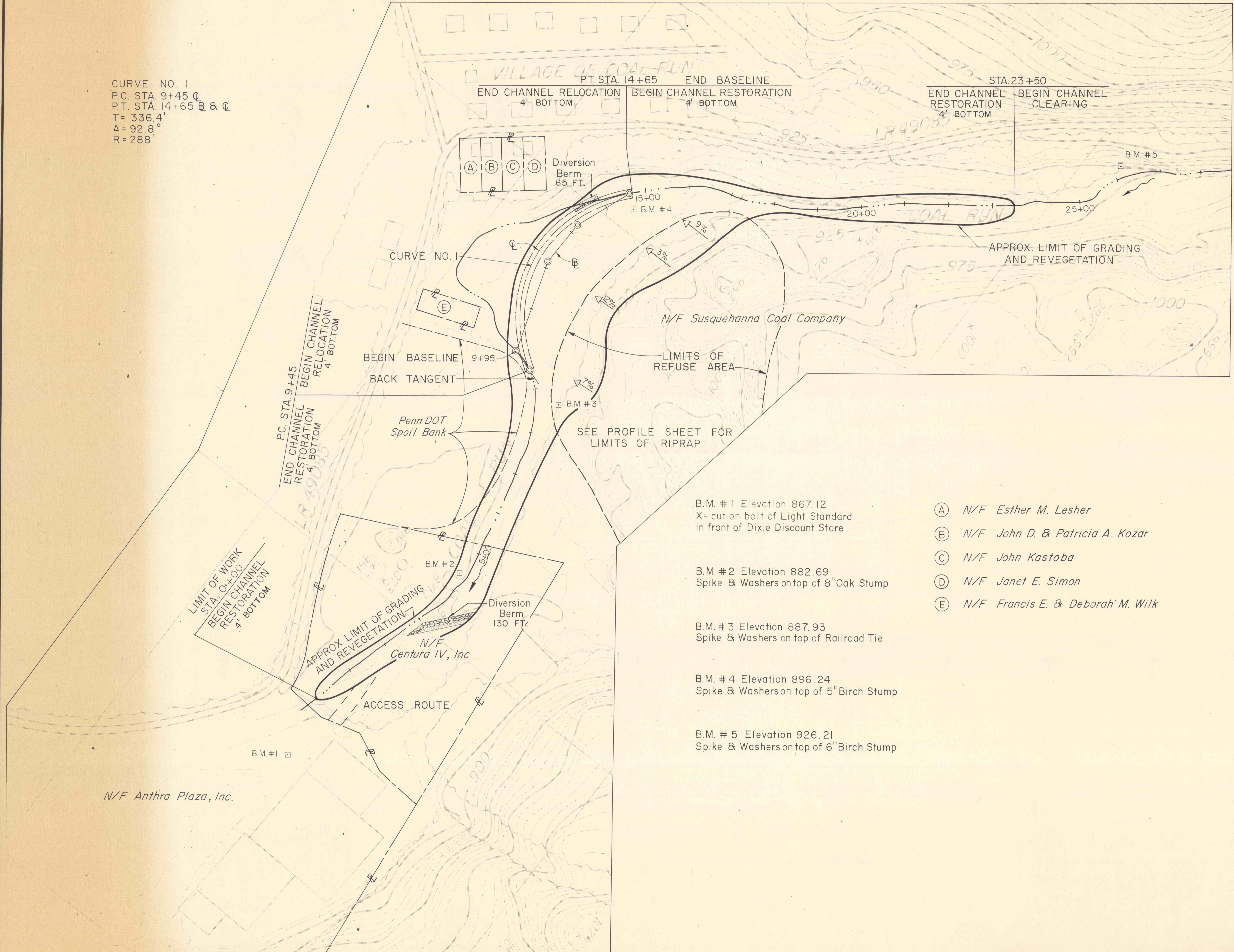
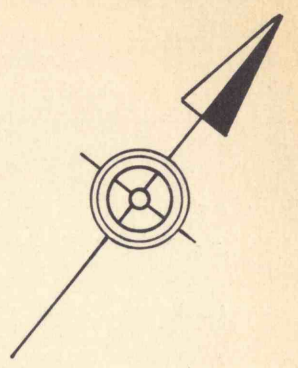


CURVE NO. 1  
 P.C. STA. 9+45 C  
 P.T. STA. 14+65 B & C  
 T= 336.4'  
 Δ= 92.8°  
 R= 288'



Match to Sheet 4

- B.M. #1 Elevation 867.12  
X- cut on bolt of Light Standard  
in front of Dixie Discount Store
  - B.M. #2 Elevation 882.69  
Spike & Washers on top of 8" Oak Stump
  - B.M. #3 Elevation 887.93  
Spike & Washers on top of Railroad Tie
  - B.M. #4 Elevation 896.24  
Spike & Washers on top of 5" Birch Stump
  - B.M. #5 Elevation 926.21  
Spike & Washers on top of 6" Birch Stump
- (A) N/F Esther M. Leshar
  - (B) N/F John D. & Patricia A. Kozar
  - (C) N/F John Kastoba
  - (D) N/F Janet E. Simon
  - (E) N/F Francis E. & Deborah M. Wilk

NO	DATE	REVISION	APPR
SUBMITTED			
PROFESSIONAL			
APPROVED			
CHIEF - DIVISION OF MINE RECLAMATION			
APPROVED			
DIRECTOR - BUREAU OF DESIGN			
COMMONWEALTH OF PENNSYLVANIA DEPARTMENT OF ENVIRONMENTAL RESOURCES OFFICE OF RESOURCES MANAGEMENT			
PROJECT NO. SL 113-5-1			
MINE DRAINAGE POLLUTION ABATEMENT COAL RUN SHAMOKIN CREEK WATERSHED NORTHUMBERLAND COUNTY, PA.			
ERDMAN, ANTHONY, ASSOCIATES Consulting Engineers Camp Hill, Pa. Rochester, N.Y.			

PLAN