

INSTALLATION OF INLET TOP UNITS

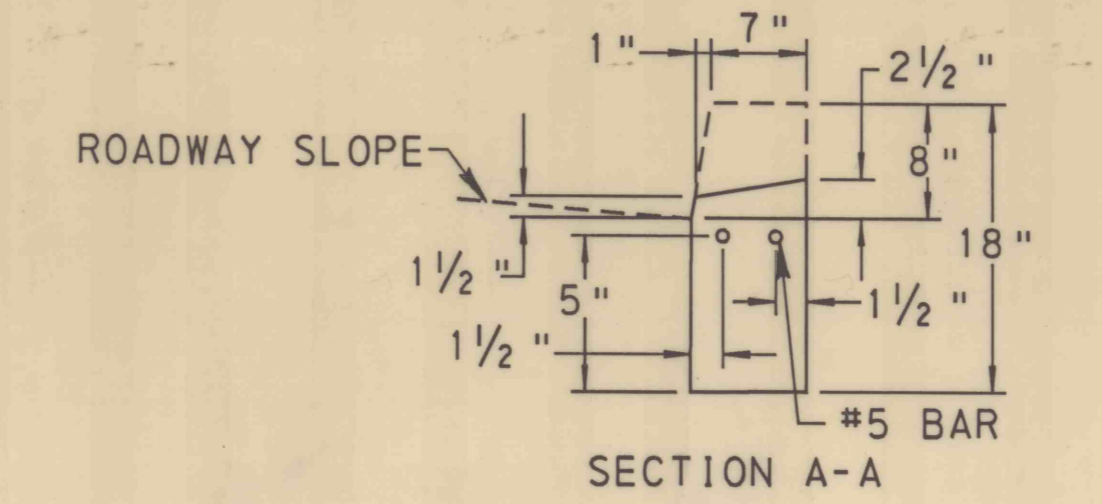
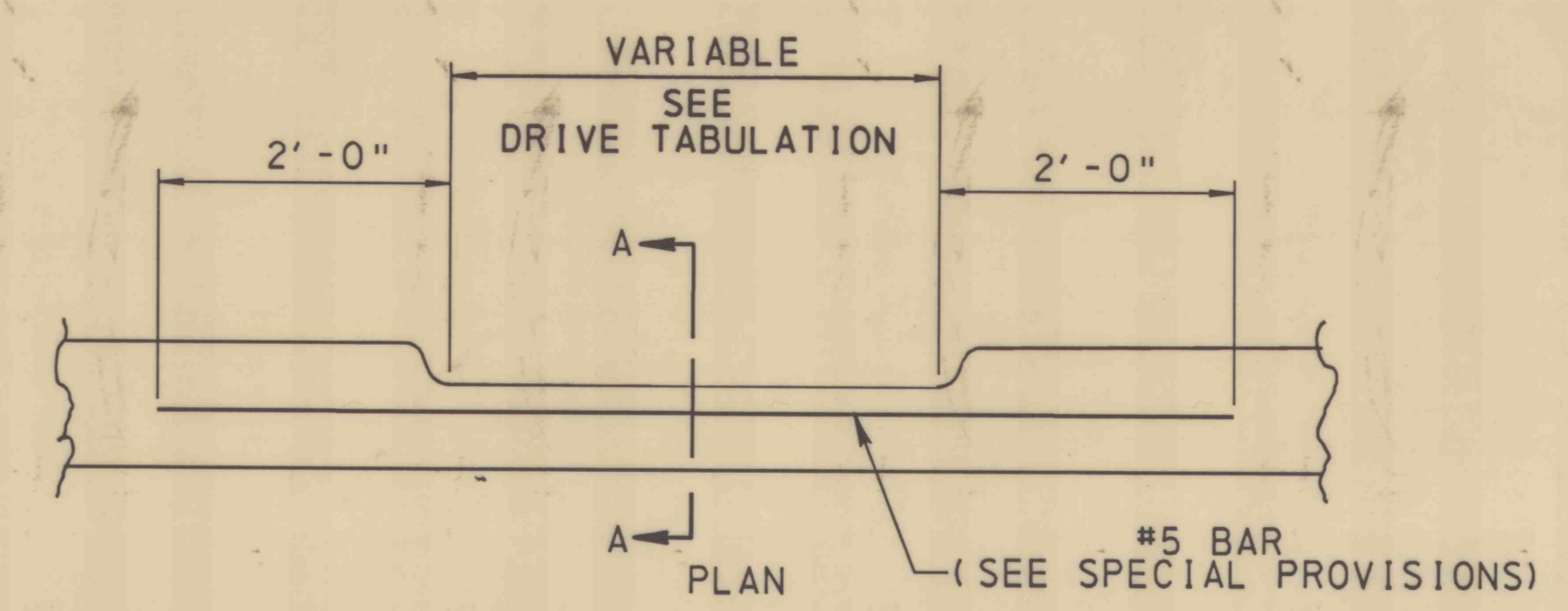
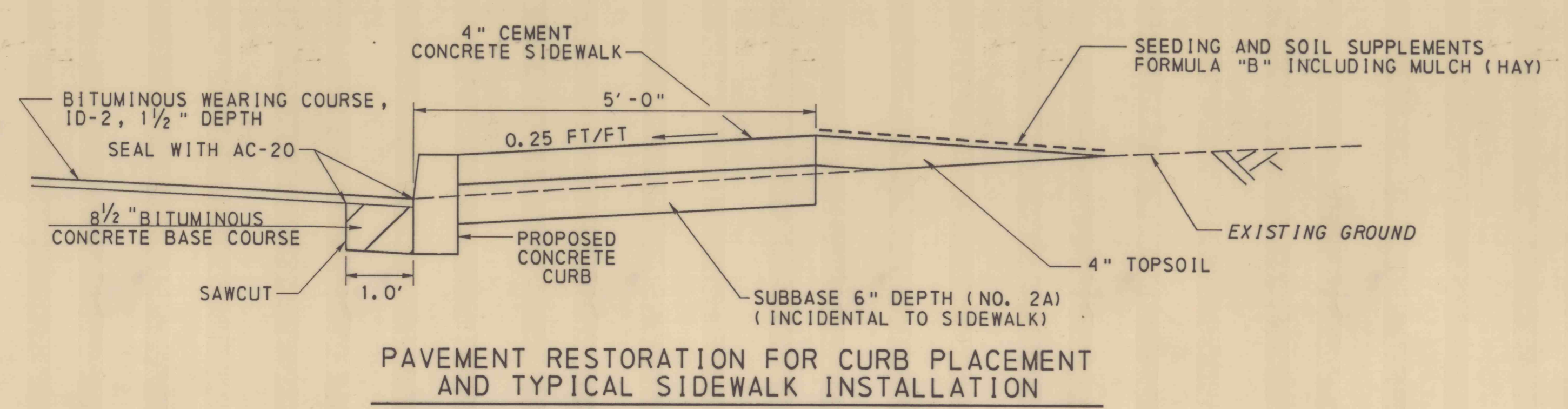
ITEM NO. 4605-2335
ITEM NO. 4605-2345

NOTE: HEIGHT ADJUSTMENT INCIDENTAL TO TOP UNIT.

* - OF THE TYPE INDICATED
** - TYP. LIMIT OF EXCAVATION (INCIDENTAL)

DETAIL FOR DROP CURB AT SIDEWALKS

STA. 82+73 LT.
STA. 83+15 LT.



DETAIL FOR DROP CURB AT DRIVES

NO.	DATE	REVISION	APPR.
SUBMITTED			
 PROJECT DESIGNER, WILKES-BARRE			
APPROVED			
 CHIEF, DESIGN SECTION, WILKES-BARRE			
COMMONWEALTH OF PENNSYLVANIA DEPARTMENT OF ENVIRONMENTAL PROTECTION			
PROJECT NO. OSM 35(2080) 102.1			
STREAM CHANNEL REHABILITATION STERRY CREEK SOUTH JESSUP BOROUGH			
LACKAWANNA COUNTY, PENNSYLVANIA			
CROSS SECTIONS AND DETAILS			
DRAWN BY	DATE	DRAWING NO.	
PA. D.O.T.	SEP. 26, 1996	14 of 26	
CHECKED BY	SCALE		
UJG	AS SHOWN		

ALL DIMENSIONS AND EXISTING CONDITIONS SHALL BE CHECKED AND VERIFIED BY CONTRACTOR AT THE SITE.