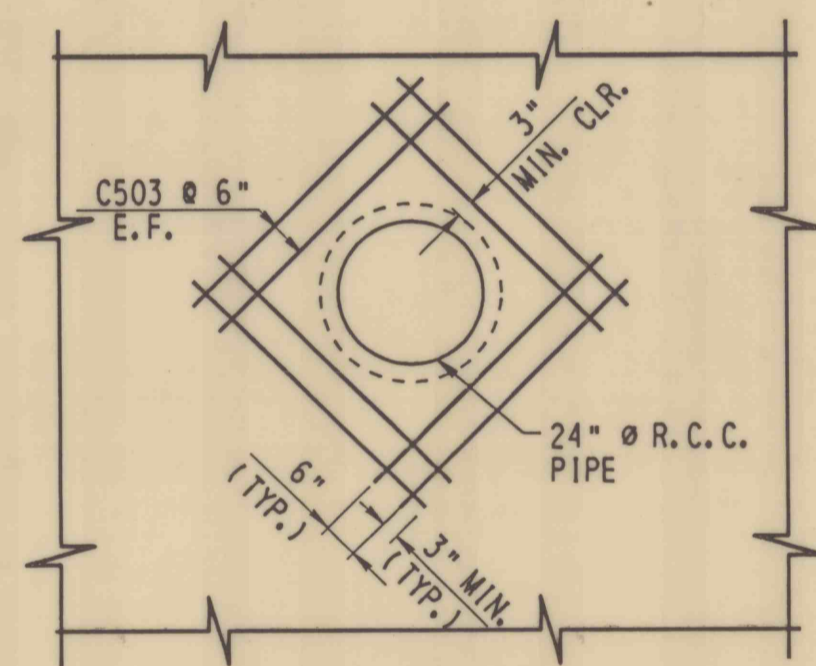


**SLAB PLAN**

SCALE: 1/4" = 1'-0"  
2 0 2 4 FEET



**REINFORCEMENT DETAIL AT PIPE OPENING**

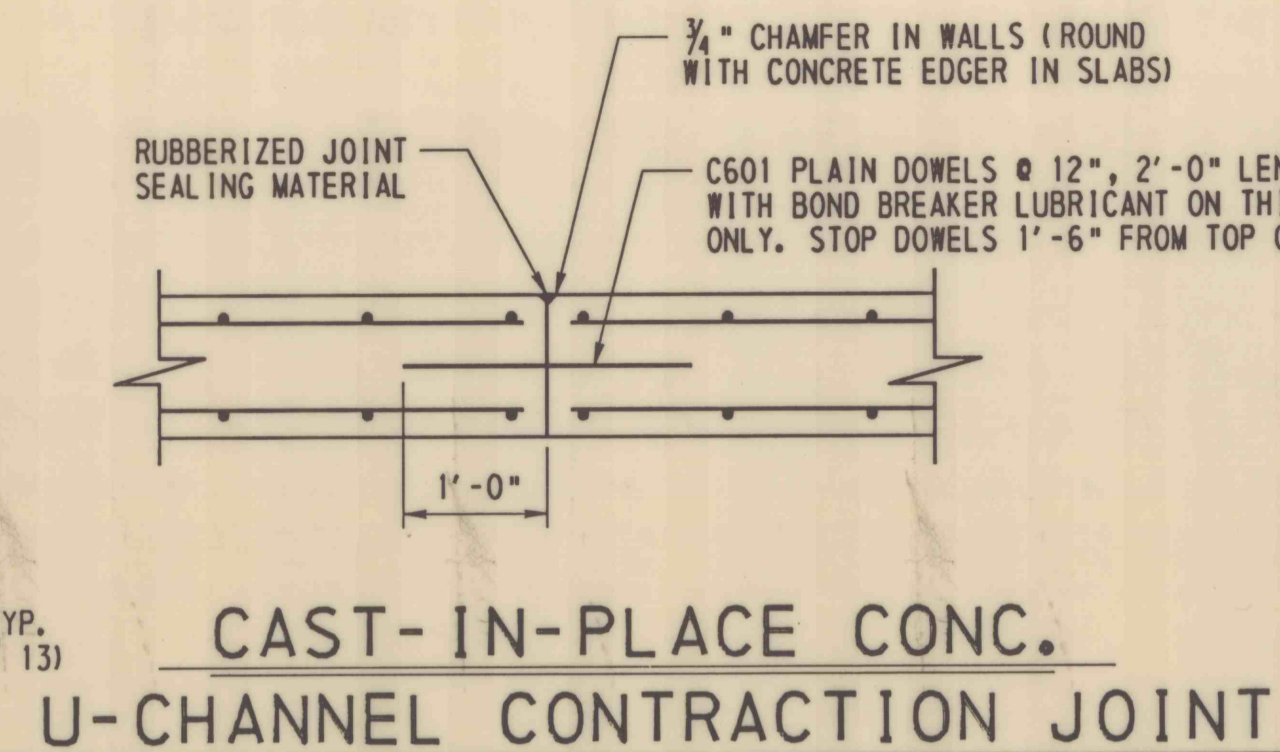
SCALE: 3/8" = 1'-0"  
1 0 1 2 3 FEET

**LEGEND**

- MSSRB - MECHANICAL SPLICE SYSTEM FOR NO. 4 REINFORCEMENT BARS, EPOXY COATED.
- E.F. - EACH FACE
- E.S. - EQUALLY SPACED

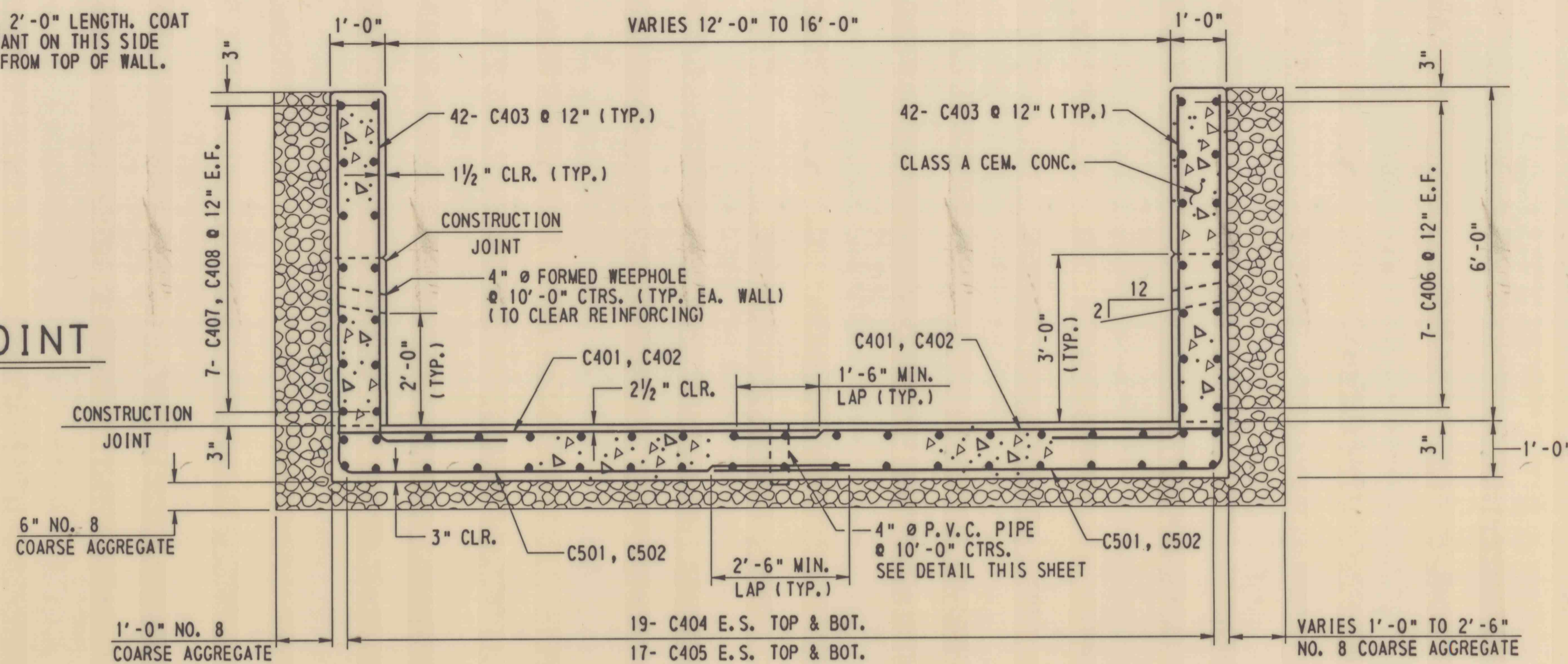
**NOTE:**

- FOR SIDEWALK AND PARAPET REINFORCEMENT, SEE SHEET 10 & 11.
- FOR REINFORCEMENT BAR SCHEDULE, SEE SHEET 10.



**CAST-IN-PLACE CONC. U-CHANNEL CONTRACTION JOINT**

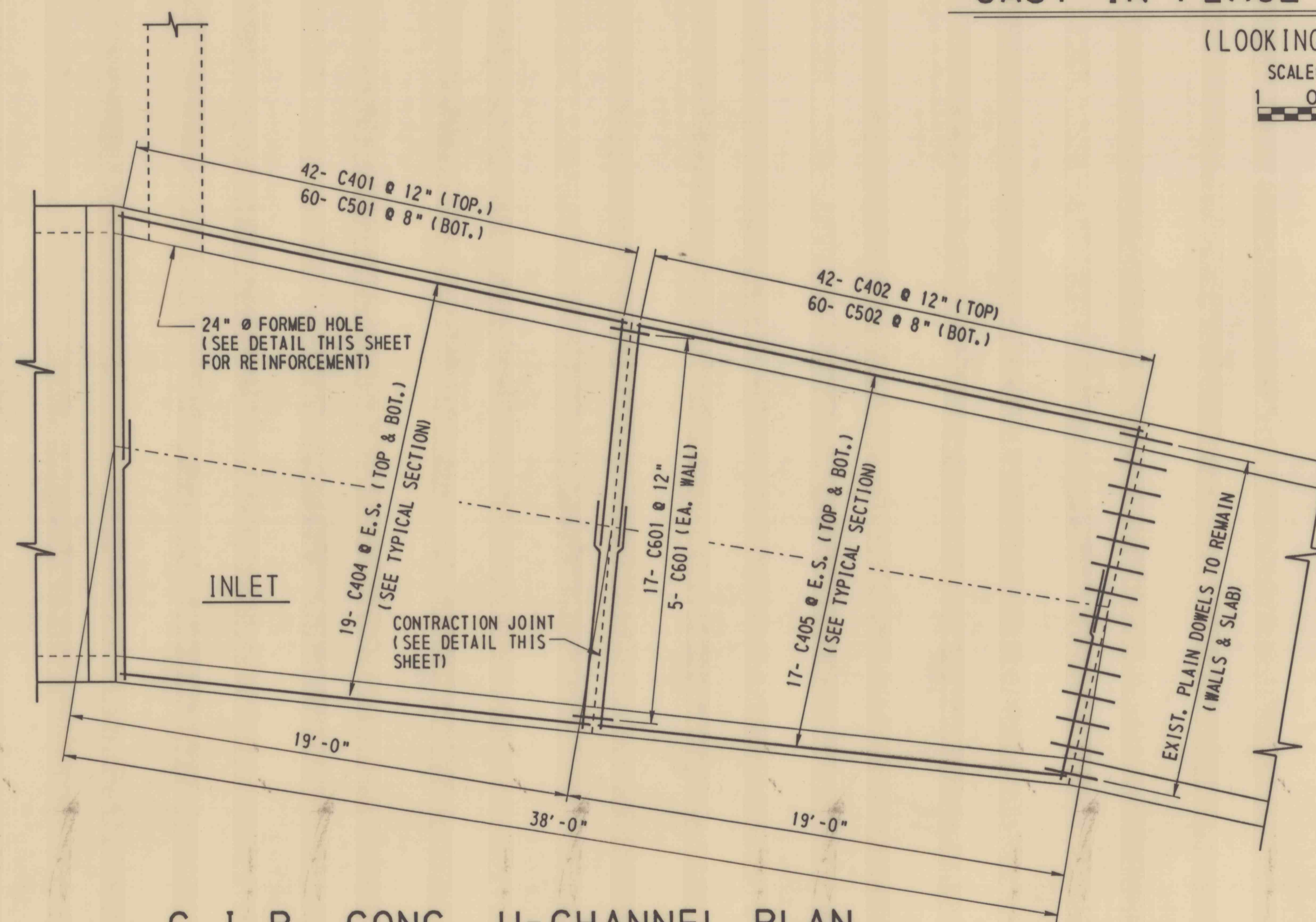
SCALE: 3/4" = 1'-0"  
12 0 12 INCHES



**TYPICAL SECTION CAST-IN-PLACE CONCRETE U-CHANNEL**

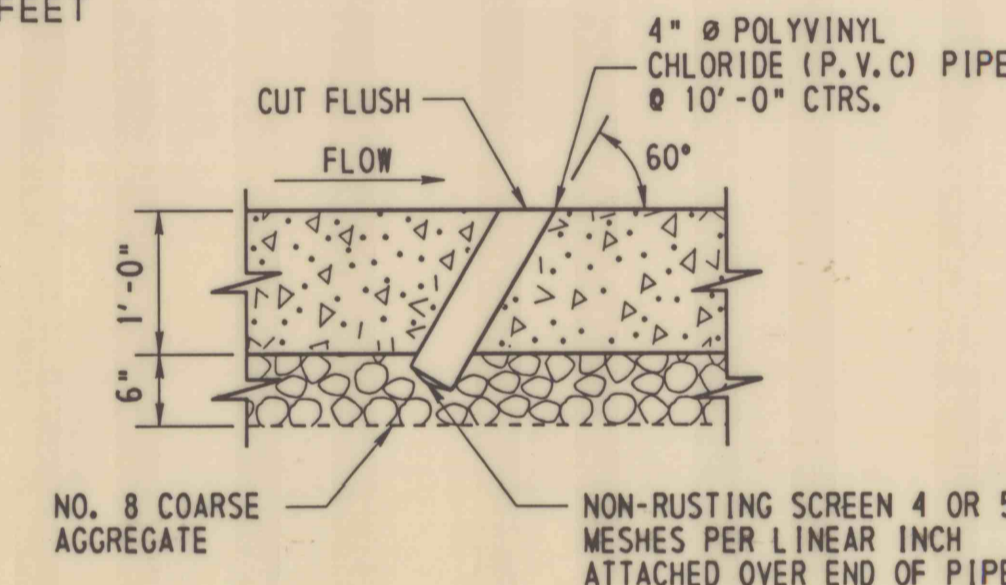
(LOOKING DOWNSTREAM)

SCALE: 1/2" = 1'-0"  
1 0 1 2 FEET



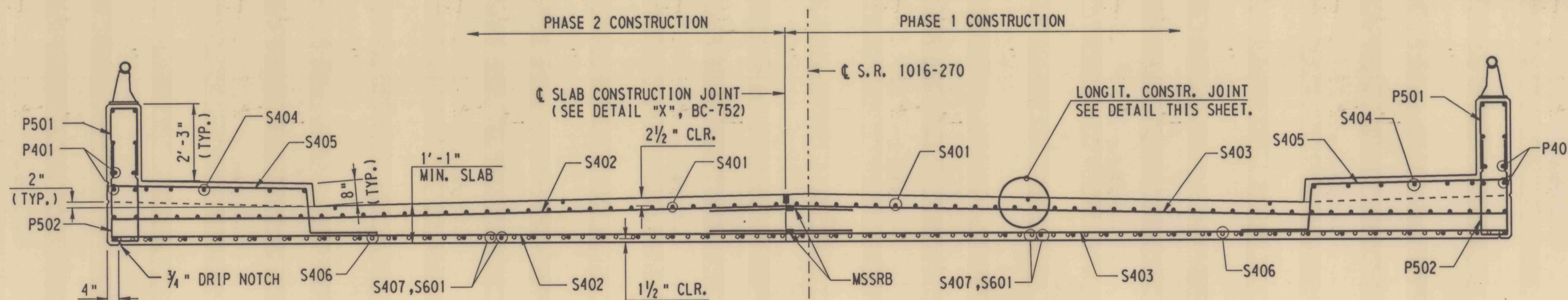
**C.I.P. CONC. U-CHANNEL PLAN**

SCALE: 1/4" = 1'-0"  
2 0 2 4 FEET



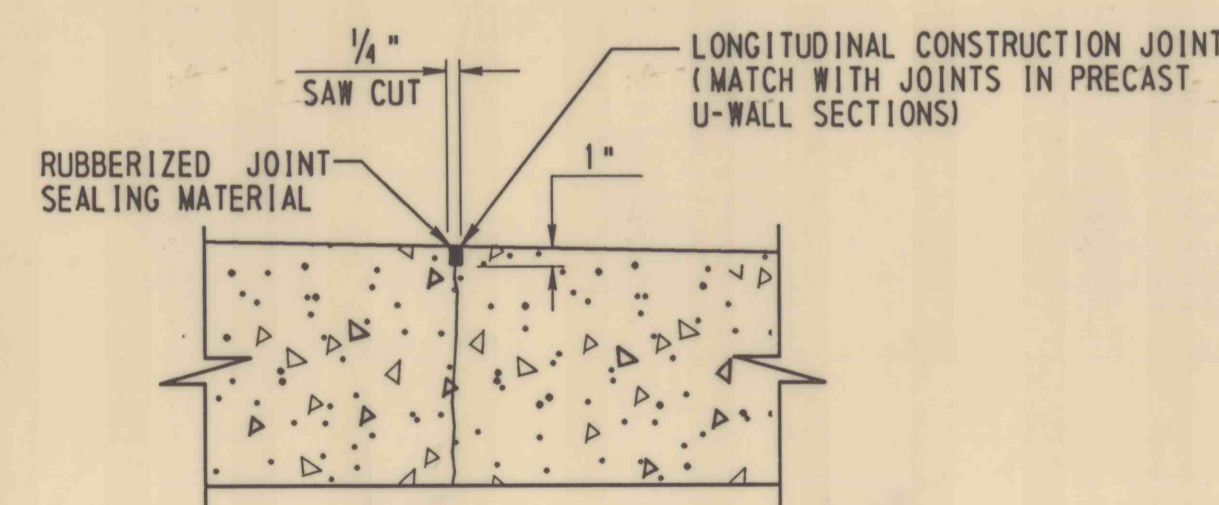
**CAST-IN-PLACE CONC. U-CHANNEL SLAB WEEPHOLE**

SCALE: 3/4" = 1'-0"  
12 0 12 INCHES



**TYPICAL CROSS SECTION**

SCALE: 3/8" = 1'-0"  
1 0 1 2 3 FEET



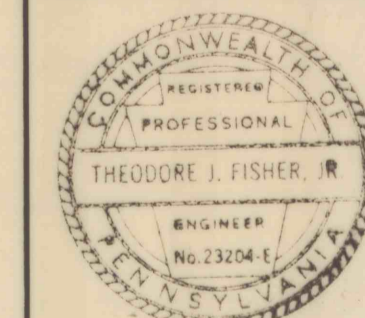
**LONGIT. CONSTRUCTION JOINT**

NO TO SCALE

NO.	DATE	REVISION	APPR.

SUBMITTED: *David A. Greenfield*  
PROJECT DESIGNER, WILKES-BARRIE

APPROVED: *Theodore J. Fisher*  
CHIEF, DESIGN SECTION, WILKES-BARRIE



COMMONWEALTH OF PENNSYLVANIA  
DEPARTMENT OF ENVIRONMENTAL PROTECTION

PROJECT NO. OSM 35(2080) 102.1  
**STREAM CHANNEL REHABILITATION**  
STERRY CREEK SOUTH  
JESSUP BOROUGH  
LACKAWANNA COUNTY, PENNSYLVANIA

**SLAB PLAN, SECTIONS & DETAILS**

DRAWN BY P.A. D.O.T.	DATE SEP. 26, 1996	DRAWING NO. 12 of 26
CHECKED BY V.T.O.	SCALE AS SHOWN	

ALL DIMENSIONS AND EXISTING CONDITIONS SHALL BE CHECKED AND VERIFIED BY CONTRACTOR AT THE SITE.