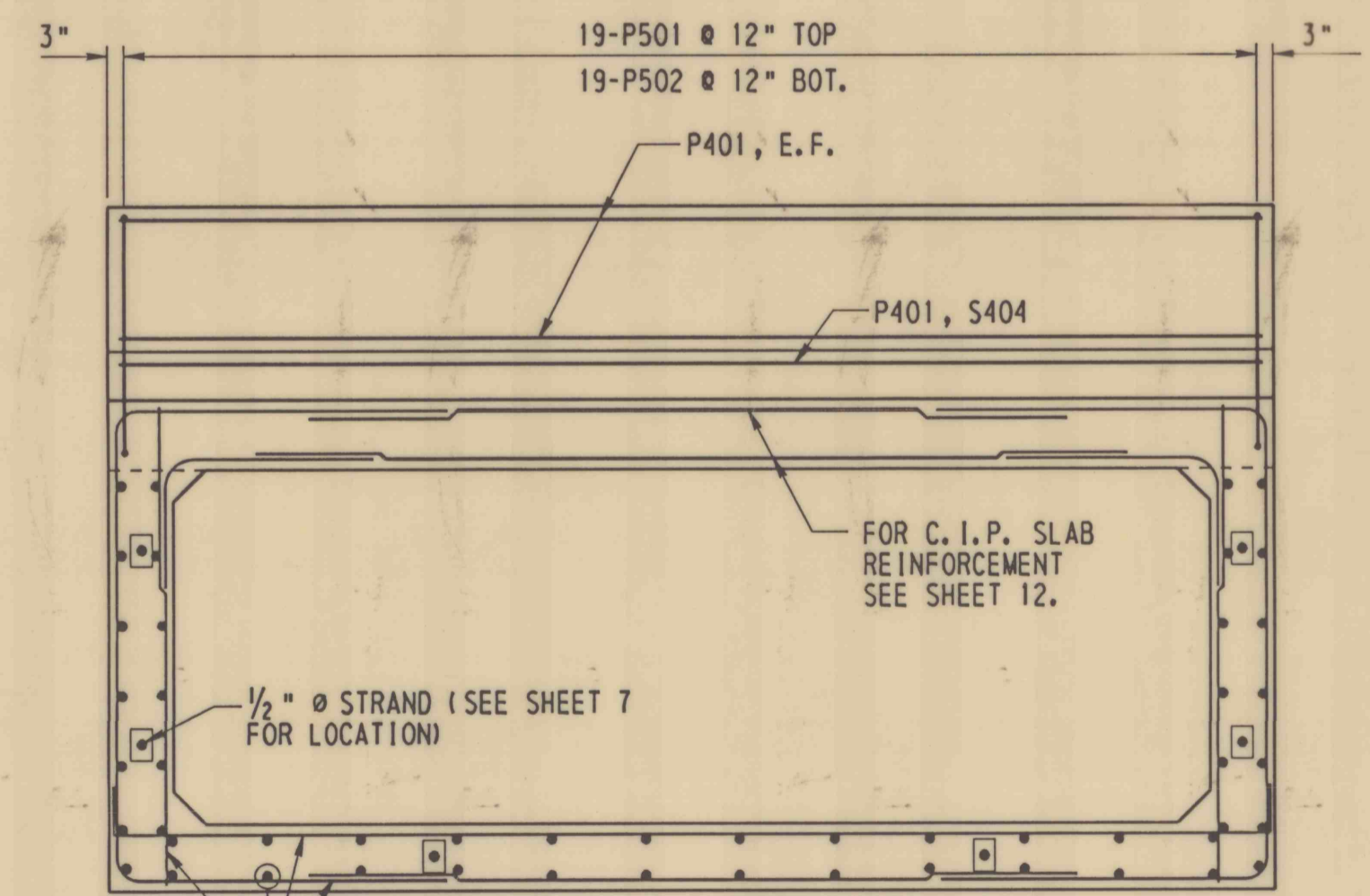
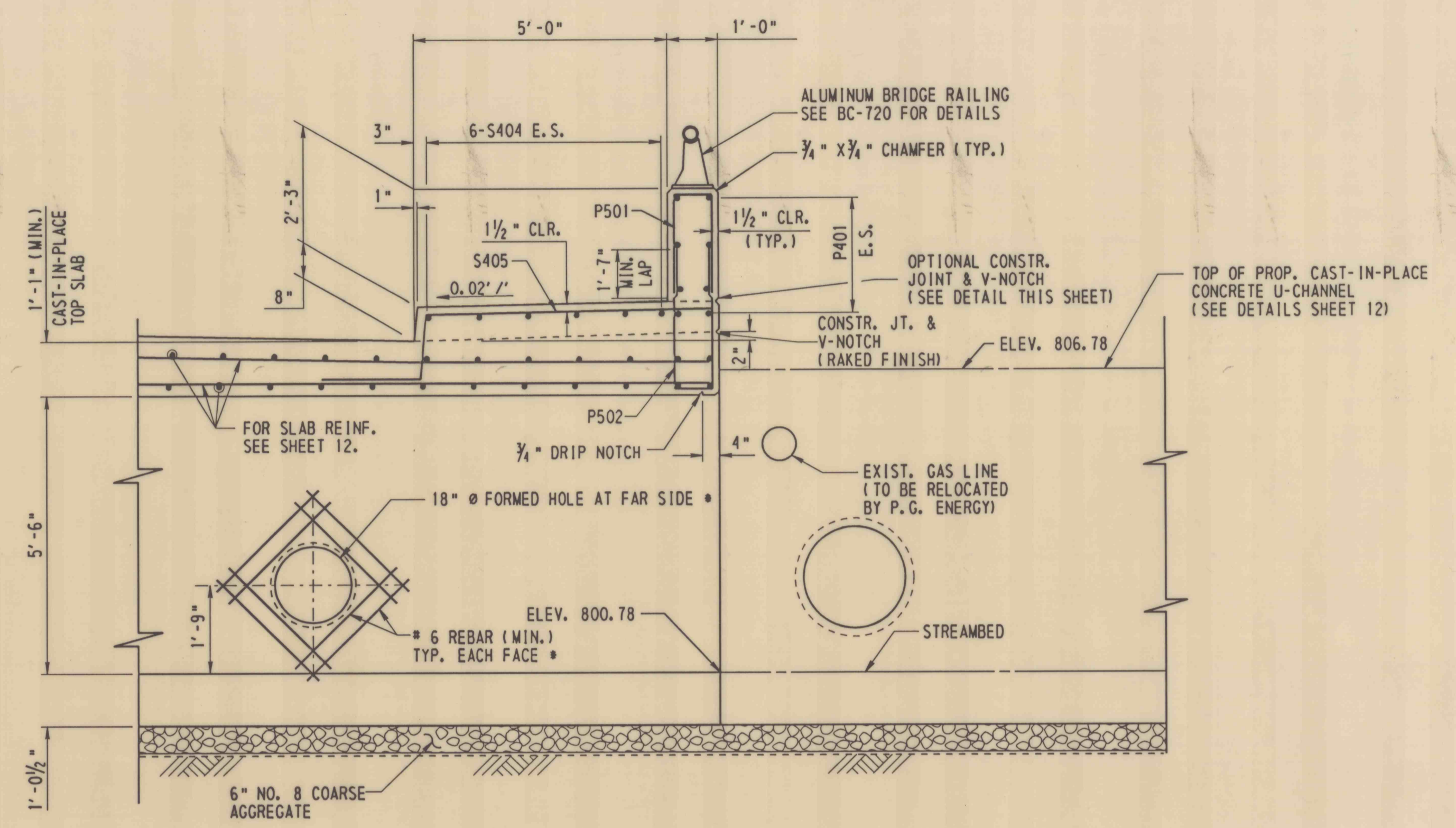


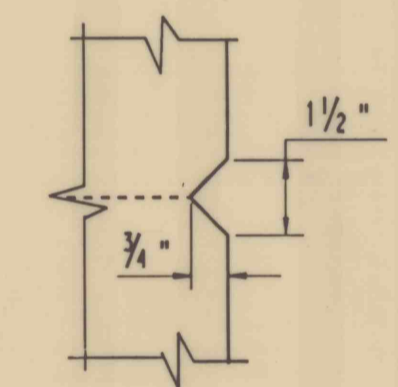
**PLAN (INLET)**  
SCALE: 3/8" = 1'-0"  
1 0 1 2 3 FEET



**INLET ELEVATION**  
SCALE: 3/8" = 1'-0"  
1 0 1 2 3 FEET



**SECTION B-B**  
SCALE: 1/2" = 1'-0"  
1 0 1 2 FEET



**V-NOTCH DETAIL**  
NO SCALE

**LEGEND**

- - PRECAST U-WALL FABRICATOR IS TO PROVIDE MINIMUM REINFORCEMENT AS SHOWN AT FORMED HOLES. SHOW REINFORCEMENT ON THE SHOP DRAWINGS. SUBMIT ALL COMPUTATIONS WITH THE SHOP DRAWINGS.
- F.F. = FRONT FACE
- R.F. = REAR FACE
- E.F. = EACH FACE
- E.S. = EQUALLY SPACED

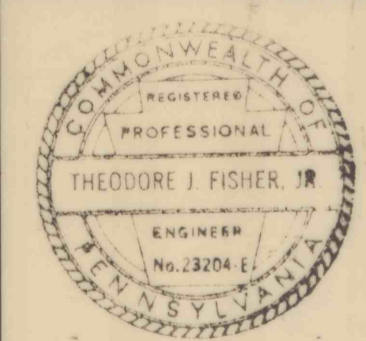
**NOTE :**

- TOP SLAB, SIDEWALK AND PARAPET TO BE PLACED AFTER PRECAST CONCRETE U-WALL IS IN PLACE AND POST TENSIONED.
- FOR REINFORCEMENT BAR SCHEDULE SEE SHEET 10.
- FOR STAKE-OUT PLAN SEE SHEET 7.

NO.	DATE	REVISION	APPR.

SUBMITTED: *Doris A. Greenfield*  
PROJECT DESIGNER, WILKES-BARRE

APPROVED: *Theodore J. Fisher, Jr.*  
CHIEF, DESIGN SECTION, WILKES-BARRE



COMMONWEALTH OF PENNSYLVANIA  
DEPARTMENT OF ENVIRONMENTAL PROTECTION

PROJECT NO. OSM 35(2080) 102.1

STREAM CHANNEL REHABILITATION  
STERRY CREEK SOUTH  
JESSUP BOROUGH

LACKAWANNA COUNTY, PENNSYLVANIA

**INLET PLAN, SECTION & DETAILS**

DRAWN BY PA. D.O.T.	DATE SEP. 26, 1996	DRAWING NO. 11 of 26
CHECKED BY ~J.T.	SCALE AS SHOWN	

ALL DIMENSIONS AND EXISTING CONDITIONS SHALL BE CHECKED AND VERIFIED BY CONTRACTOR AT THE SITE.