

**SURFACE OWNERS:**

- ① Northumberland County Commissioners  
Northumberland County Court House Annex  
Sunbury, PA 17801
- ② Pennsylvania Power and Light Co.  
Two North Ninth Street  
Allentown, PA 18101

**LEGEND:**

- — — — — PROJECT LIMIT
- — — — — LIMIT OF GRADING
- X — X — X — X FILTER FABRIC FENCE
- — — — — EXISTING 2' CONTOURS
- — — — — EXISTING 10' CONTOURS
- — — — — PROPOSED CONTOURS
- XXXXX — — — — — WILDLIFE HABITAT
- — — — — APPROXIMATE PROPERTY LINE
- — — — — PROBABLE COLLAPSED SLOPE

**CAUTION**

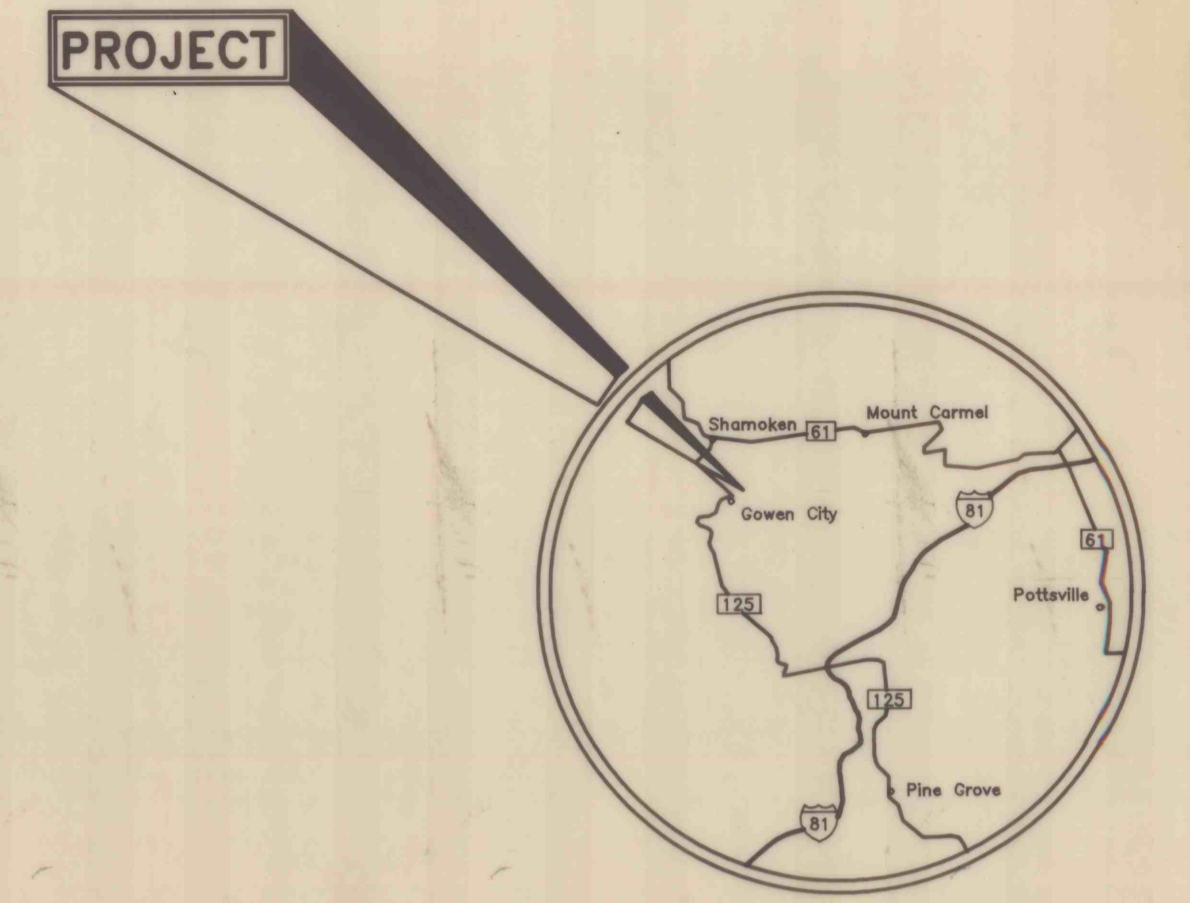
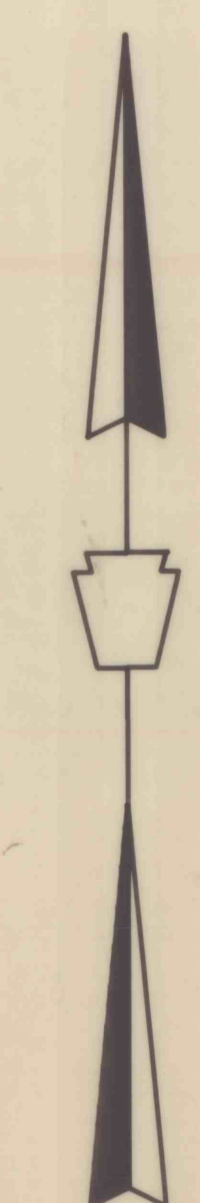
THE CONTRACTOR IS CAUTIONED ABOUT THE PROBABLE COLLAPSED SLOPES LOCATED WITHIN THE PROJECT. THEREFORE, THE CONTRACTOR SHALL EXERCISE EXTREME CARE IN THE VICINITY OF THE SLOPES WHEN EXECUTING THE ITEMS OF WORK.

THE CONTRACTOR IS CAUTIONED THAT THE STABILITY OF THE SIDEWALLS OF THE STRIP PITS IS UNKNOWN. THEREFORE, THE CONTRACTOR SHALL EXERCISE EXTREME CARE IN THE VICINITY OF THE STRIP PITS BY AVOIDING LARGE SURCHARGE LOADS AND EXCESSIVE VIBRATION LOADINGS.

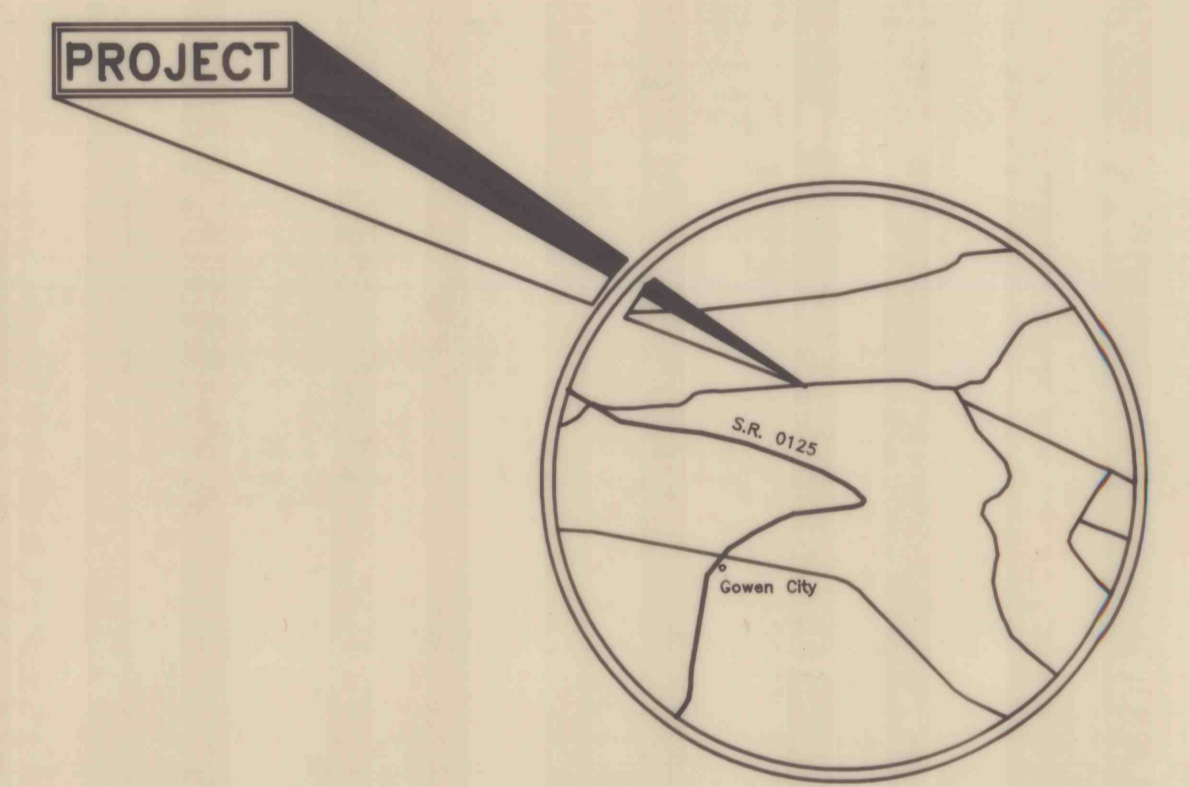
SPECIAL ATTENTION IS DRAWN TO "SPECIAL REQUIREMENT NO. 11 SAFETY" IN THE CONTRACT DOCUMENTS. THE CONTRACTOR SHALL STRICTLY ADHERE TO THIS REQUIREMENT.

**NOTE:**

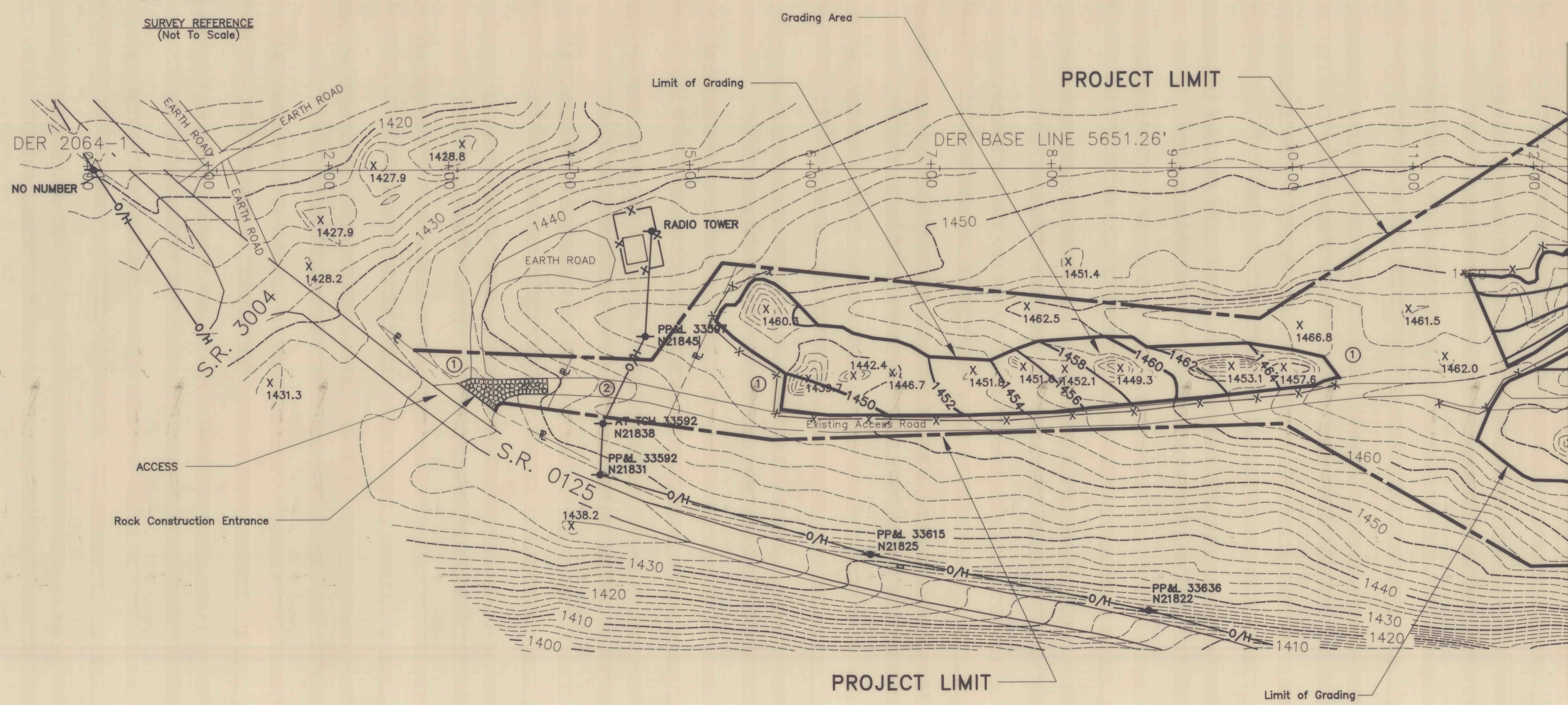
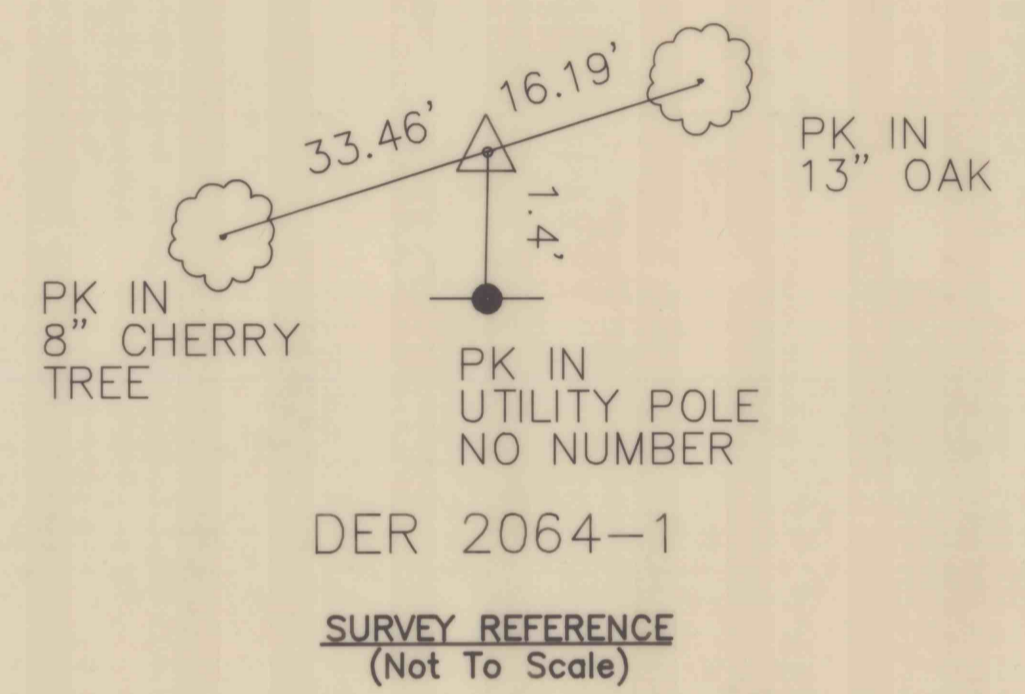
There Are No Known Subsurface Utilities Within The Project Limits. Filter Fabric Fence Shown Outside Limits Of Grading For Clarity.



**LOCATION MAP**  
Scale: 1 in. = 9 mi.



**VICINITY MAP**  
Scale: 1 in. = 2000 ft.



**SURFACE MAP**  
Scale: 1 in. = 50 ft.

Match Line To Sheet 3 of 5

NO.	DATE	REVISION	APPR.
SUBMITTED <i>David E. Janson</i> PROJECT DESIGNER, WILKES-BARRÉ			
APPROVED <i>Thodore J. Fisher, Jr.</i> CHIEF, DESIGN SECTION, WILKES-BARRÉ			
COMMONWEALTH OF PENNSYLVANIA DEPARTMENT OF ENVIRONMENTAL PROTECTION			
CONTRACT NO. OSM 49(2064)101.1			
BACKFILLING STRIP PITS GOWEN CITY NORTHEAST COAL TOWNSHIP NORTHUMBERLAND COUNTY, PENNSYLVANIA			
<b>LOCATION, VICINITY, AND SURFACE MAPS</b>			
DRAWN BY <i>D.S.D.</i>	DATE Dec. 27, 1995	DRAWING NO. 2 of 5	
CHECKED BY <i>vtd</i>	SCALE As Shown	ALL DIMENSIONS AND EXISTING CONDITIONS SHALL BE CHECKED AND VERIFIED BY CONTRACTOR AT THE SITE.	